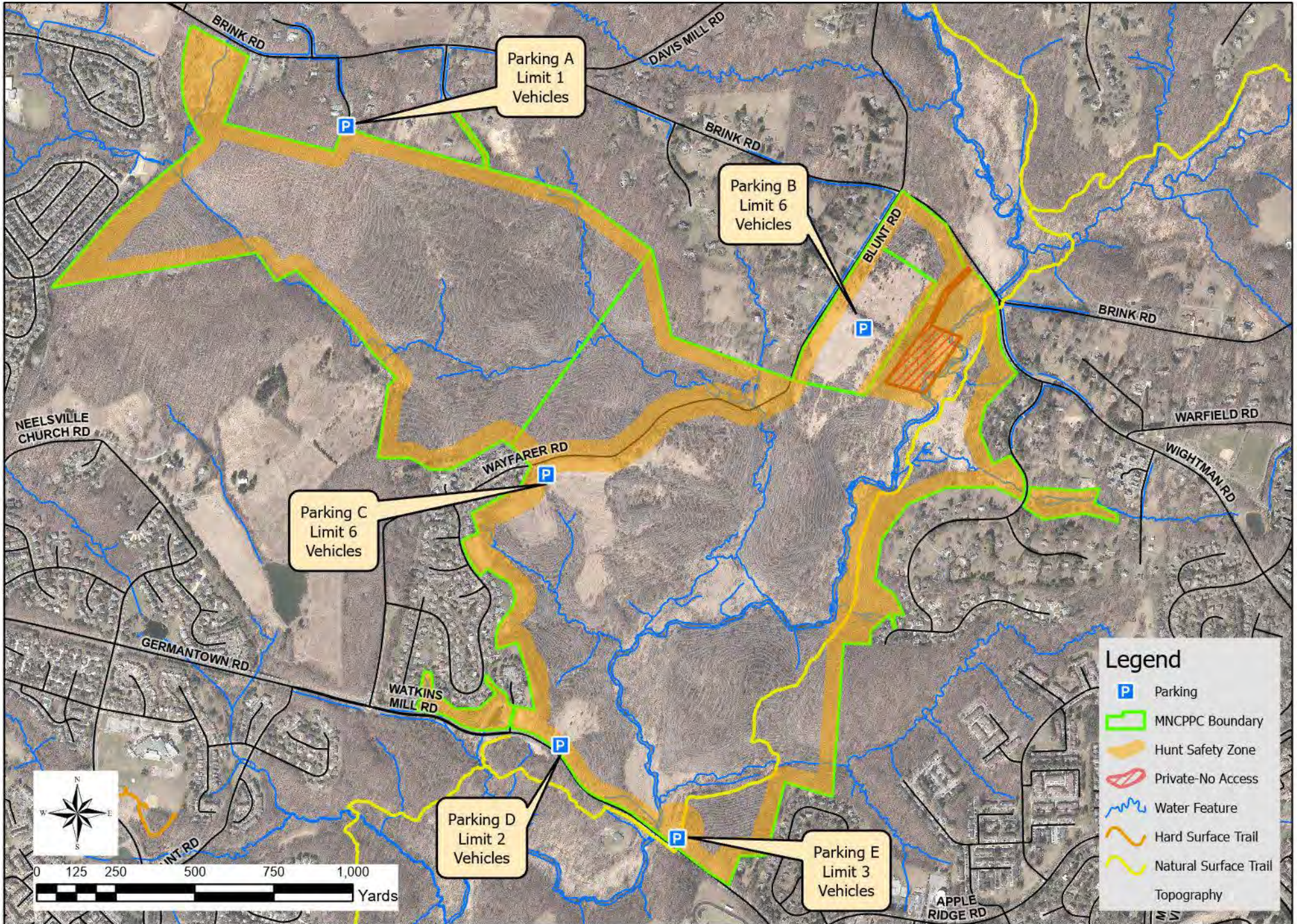




North Germantown Greenway, Great Seneca SVU 2, Blunt Rd LP, Archery Hunting



Legend

- Parking
- MNCPPC Boundary
- Hunt Safety Zone
- Private-No Access
- Water Feature
- Hard Surface Trail
- Natural Surface Trail
- Topography

DIRECTIONS TO PARKING AND HUNT ACCESS

North Germantown Greenway / Blunt Rd LP / Great Seneca SVP 2

To Main Parking Lot (Parking B): Across from 21018 BLUNT RD, GERMANTOWN, MD 20876.

From I-270 – Take Exit 16 (Ridge Road Rte. 27). Travel East North East on Ridge Road (27). Cross Rte. 355 (Frederick Road) and continue on Ridge to Brink Road. Turn Right onto Brink Road and proceed 1.8 miles to Blunt Road. (If you cross the creek and come to Wightman Road, you have gone too far) Turn Right on to Blunt Road. Follow Blunt Road .25 Miles to locked cable gate at meadow on the left.

From I-70 – Take Exit 68 (Ridge Road Rte. 27) Travel South approx. 10 miles to Brink Road (If you come to Rte. 355 you have gone too far). Turn Left on to Brink Road and proceed 1.8 miles to Blunt Road. (If you cross the creek and come to Wightman Road, you have gone too far) Turn Right on to Blunt Road. Follow Blunt Road .25 Miles to locked cable gate at meadow on the left.

Parking A (Limit 1 Vehicle): From main parking lot, turn right onto Blunt Rd. Follow to stop sign and turn left onto Brink Rd. Proceed approx 1.1 miles (just over crest of hill) and turn left onto Leaman Lane. Follow to dead end and pull straight ahead off of road. **DO NOT impede the driveways on this street!**

Parking B (Limit 6 Vehicles): See description at top of page “To Main Parking Lot”. Across from 21018 BLUNT RD, GERMANTOWN, MD 20876. Parking area is accessed via a locked cable gate. After unlocking cable gate (and re-locking behind you), travel uphill on mowed road to larger mowed area at top of hill.

Parking C (Limit 6 Vehicles): From main parking lot, turn left and travel SW on Blunt Road 0.6 miles. Turn left and access mowed meadow area via a locked cable gate (on the West side of the park just prior to housing development).

Parking D (Limit 2 Vehicles): From main parking lot, turn left and travel SW on Blunt Rd. Follow Blunt Road all the way to where it ends at a small traffic circle. Proceed around the traffic circle to make a left turn onto Watkins Mill Road. Follow Watkins Mill Road approximately 0.3 miles. Parking is at gravel pull off on the left just past Green River Terr. Be sure to park well off the shoulder (Staff may escort to this parking).

Parking E (Limit 3 Vehicles): From main parking lot, turn left and travel SW on Blunt Rd. Follow Blunt Road all the way to where it ends at a small traffic circle. Proceed around the traffic circle to make a left turn onto Watkins Mill Road. Follow Watkins Mill Road 0.6 miles across the bridge. Shortly after the bridge, turn left into the gravel parking lot. This is a popular trailhead; please yield to other user groups when appropriate.