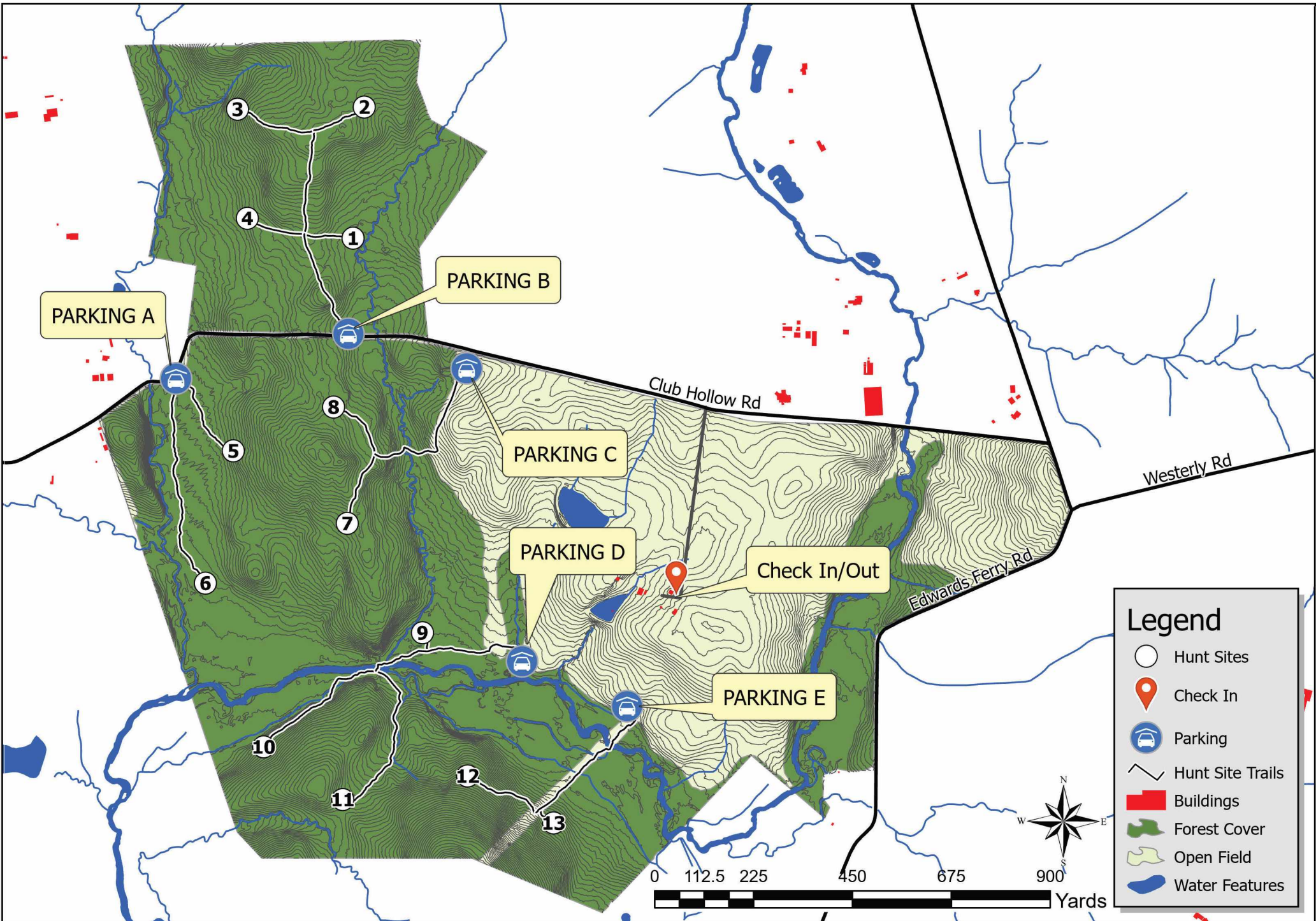




Royce Hanson Conservation Park at Broad Run - Lottery Firearms Hunt Map



DIRECTIONS TO PARKING AND HUNT ACCESS

ROYCE HANSON CONSERVATION PARK AT BROAD RUN

Check-in/out- Located at 21765 Club Hollow Rd (39.131023, -77.457521)

Located 2.7 miles southwest of Poolesville.

PARKING A (Stand Sites 5 & 6): From Check-In, take gravel road to park entrance on Club Hollow Rd. Make a left and travel approximately 0.8 miles to Trundle Rd. Make a U-turn at Trundle Rd. (use caution). Travel northeast on Club Hollow until you reach a small bend in the road (about 185 yards). Parking will be on right side of the road in a small grassy shoulder. Park in line with the parking sign and be sure not to impede travel on Club Hollow Rd. Enter woods on right to locate reflective tacks.

PARKING B (Stand Sites 1, 2, 3, 4): From Check-In, take gravel road to park entrance on Club Hollow Rd. Make a left and travel approximately 0.5 miles. Parking will be on right on a small grassy shoulder. Park in line with the parking sign and be sure not to impede travel on Club Hollow Rd. Enter woods on right to locate reflective tacks.

PARKING C (Stand Sites 7 & 8): From Check-In, take gravel road to park entrance on Club Hollow Rd. Make a left and travel approximately 0.3 miles. Parking will be on left on a grassy field corner at edge of woods. Walk the field edge south to locate reflective tacks.

PARKING D (Stand Sites 9, 10, 11): From Check-In, drive west through field past barns, staying on the upper side of small pond. Follow west side of hedgerow, toward bottom corner of meadow, approximately 250 yards from pond. Parking will be on left on a grassy field edge. Please use caution if ground conditions are marginal. Park in line with the parking sign. Enter woods on left to locate reflective tacks.

PARKING E (Stand Sites 12 & 13): From Check-In, drive southwest through field, staying on the lower side of small pond. Follow east side of hedgerow, staying on field edge. Follow the field edge until you reach parking sign just prior to where the gas line meets the field edge, approximately 275 yards from pond. Please use caution if ground conditions are marginal. Park in line with the parking sign. Follow gas line to locate reflective tacks.