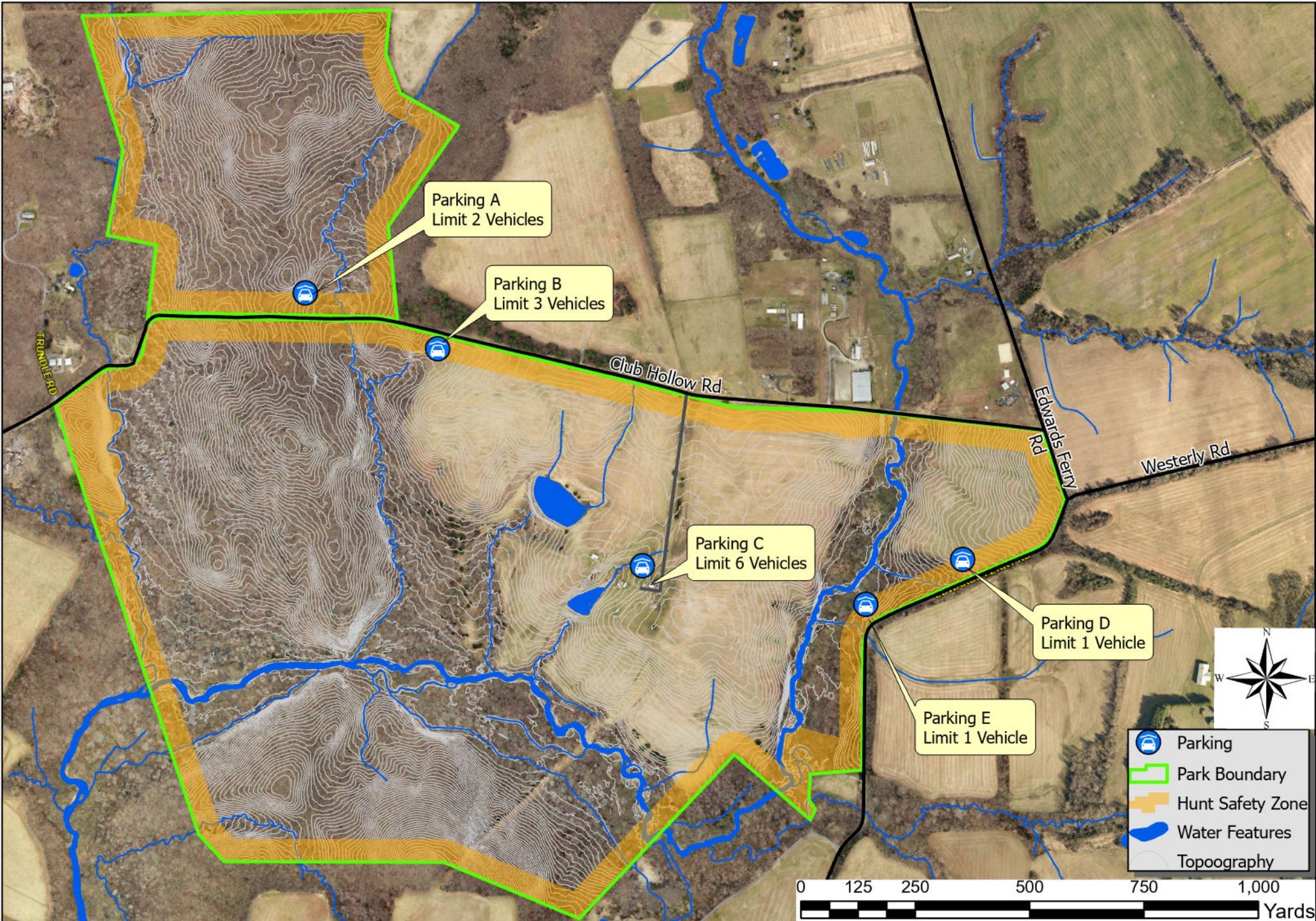




# Royce Hanson Conservation Park at Broad Run - Lottery Archery Hunt Map



## **DIRECTIONS TO PARKING AND HUNT ACCESS**

### **ROYCE HANSON CONSERVATION PARK AT BROAD RUN**

Main entrance to park (Parking C) is located at 21765 Club Hollow Rd (39.131023, -77.457521).

2.7 miles southwest of Poolesville.

**PARKING A** (Limit 2 vehicles) - From main park entrance (Parking C), travel west on Club Hollow Rd. for approximately 0.5 miles. Parking will be on right on a small grassy shoulder. Use caution and be sure not to impede travel on Club Hollow Rd.

**PARKING B** (Limit 3 vehicles) – From main park entrance (Parking C), travel west on Club Hollow Rd. for approximately 0.3 miles. Parking will be on left on a grassy field corner at edge of woods.

**PARKING C** (Limit 6 vehicles) – Turn off Club Hollow Rd. onto gravel driveway located at 21765 Club Hollow Rd. Follow gravel driveway to parking area next to small shed/barn.

**PARKING D** (Limit 1 vehicle) – From main park entrance (Parking C), travel east 0.4 miles on Club Hollow Rd. to the intersection with Edwards Ferry Rd. Turn right on Edwards Ferry Rd. Travel south approximately 0.25 miles. Parking will be on right on field edge. Use caution and be sure not to impede travel on Edwards Ferry Rd.

**PARKING E** (Limit 1 vehicle) - From main park entrance (Parking C), travel east 0.4 miles on Club Hollow Rd. to the intersection with Edwards Ferry Rd. Turn right on Edwards Ferry Rd. Travel south approximately 0.4 miles. Parking will be on right on grassy pull off at bend in the road. Use caution and be sure not to impede travel on Edwards Ferry Rd.