

# Montgomery Parks 2024



Lottery Archery Managed Deer Hunting

Program Handbook





**MONTGOMERY PARKS**

The Maryland-National Capital Park and Planning Commission  
Waters House | 12535 Milestone Manor Lane | Germantown, MD 20876  
MontgomeryParks.org

**TABLE OF CONTENTS**

NEW for 2024..... 2

Montgomery County Deer Management and the Inception of the Managed Deer Hunting Program 3

The Mission of the Managed Deer Hunting Program..... 4

Program Goals and Objectives..... 5

Lottery Archery Managed Deer Hunting Location(s)..... 6

The Managed Hunting Program Lottery Explained..... 10

Scouting Activities..... 12

Mandatory Procedures During the Archery Season..... 13

Essential Safety Measures..... 14

What to Do After the Shot ..... 15

Staff and Contact Info ..... 16

Participant Interaction with the Public..... 17

Bag Limits and Antler Restrictions ..... 18

Wrap Up..... 19

## MONTGOMERY PARKS

The Maryland-National Capital Park and Planning Commission  
Waters House | 12535 Milestone Manor Lane | Germantown, MD 20876  
MontgomeryParks.org

### NEW FOR 2024:

- Royce Hanson Conservation Park at Broad Run (RHCP-BR), located in Dickerson, MD will be added to the Lottery-based Program. This 435-acre park was acquired in 2021 by M-NCPPC. This park will be managed using a hybrid model that is new to the Lottery-based Program, whereas it will combine both archery and firearms hunting. Archery hunting will occur from September 9 – November 29, then again from January 11-31, while firearms hunting will occur on four (4) scheduled hunt dates during the winter months. No archery hunting will be permitted during the period of November 30 – January 10.
- The hunter Check-in/Check-out process has changed. Rather than phoning in/out to Park Police Dispatch at the beginning and end of each hunt day, hunters must now utilize a simple online form. Each participant will be provided a link, by email, to this online form. Please store this link in a safe place.
- Montgomery County is now included in the state’s CWD Management Area. Participants must be familiar with pertinent state guidelines found on MD DNR’s “Chronic Wasting Disease in Maryland” page. Click [HERE](#) for more information.
- **Reminder:** If MD is not the hunter’s home state, it is their responsibility to be aware of and follow their home state’s laws regarding chronic wasting disease (CWD) and importation of deer harvested in MD.

## **Montgomery County Deer Management and the Inception of the Managed Deer Hunting Program**

In 1993, responding to citizen's concerns about deer-related problems, the Montgomery County Council established a Citizen Task Force to Study White-tailed Deer Management. As a result of this group's recommendations, the Montgomery County Deer Management Work Group (DMWG) was established to develop a deer management plan for the County and oversee the implementation of a countywide deer management program.

The DMWG is a multi-agency committee working together to address concerns surrounding deer population issues within Montgomery County. The goal of the plan is to "Reduce human-deer conflicts to a level that is compatible with human priorities and land uses."

At the recommendation of the DMWG, in response to the concerns of the citizens of Montgomery County, and the stakeholders they represent, managed firearms deer hunting was implemented in the winter of 1996-1997, at Little Bennett Regional Park in Clarksburg (LBRP) and the Agricultural History Farm Park in Derwood.

Since that time, managed hunting has ceased at the Agricultural History Farm Park, due to new development and proximity to housing, but the current archery program has expanded to include:

- **Blockhouse Point Conservation Park [Darnestown] (BPCP) – converted in 2021**
- **North Germantown Greenway/Great Seneca Stream Valley Park [Germantown/Gaithersburg] (NGG/GSSVP) – converted in 2023**
- **Great Seneca Stream Valley Park Units 3-4/Goshen Branch Stream Valley Park [Germantown/Gaithersburg] (GSSVP 3-4/GBSVP) – implemented in 2023**
- **Royce Hanson Conservation Park at Broad Run [Dickerson] (RHCP-BR) – converted in 2024**

Managed hunting has been conducted annually since its inception in '96-'97 and has proven successful as a comprehensive means for reducing and maintaining the deer populations. This program is vital to the success of the Montgomery Parks' Managed Deer Population Management Program

## **The Mission of the Managed Deer Hunting Program**

The mission of the Managed Deer Hunting Program is:

*" To utilize carefully selected hunters to safely reduce and/or maintain deer populations on select parklands, in an effort to alleviate damage to natural ecosystems and reduce human- deer conflicts to a level that is compatible with human priorities and land uses."*

Safety is our number one priority for this program and is stressed in all facets of operations from the pre-screening hunter selection process through implementation in the field. Participant disregard or negligence of any safety element in this program will not be tolerated. Offenders will be removed from the program and, if deemed appropriate, will be subject to prosecution.

Participants can best further the mission of the Managed Deer Hunting Program by:

- Acting selflessly and responsibly
- Being reliable and arriving on time
- Following all rules and regulations meticulously and demonstrating willingness to safely harvest/remove multiple antlerless deer when the opportunity presents itself

Staying practiced and proficient with his/her compound bow/crossbow and other equipment as well as with target identification and shot selection (i.e. identifying antlered deer vs. antlerless deer, identifying ranges, etc.).

## MONTGOMERY PARKS

The Maryland-National Capital Park and Planning Commission  
Waters House | 12535 Milestone Manor Lane | Germantown, MD 20876  
MontgomeryParks.org

### Program Goals and Objectives

While we hope to provide an enjoyable hunting experience, this program is NOT a recreational program. Simply stated, this is a “management program.” Recreation may come as a by-product of this program, but it is not the priority, and will not be treated as such by Wildlife Ecology Staff.

The goals and objectives of the Managed Deer Hunting Program are:

- To SAFELY reduce over-populations of deer in select parks
- To maintain sustainable populations of deer in parks where population reductions have been successful, thereby reducing ecological, social and economic impacts caused by deer
- To balance white-tailed deer with their available natural habitat, thereby allowing them to fulfill their role within the environment

With these goals in mind, the hierarchy of priorities for this program can be summarized as follows:



1. Safety
2. Management Goals
3. Hunter Satisfaction

# MONTGOMERY PARKS

The Maryland-National Capital Park and Planning Commission  
Waters House | 12535 Milestone Manor Lane | Germantown, MD 20876  
MontgomeryParks.org

## Lottery Archery Managed Deer Hunting Locations

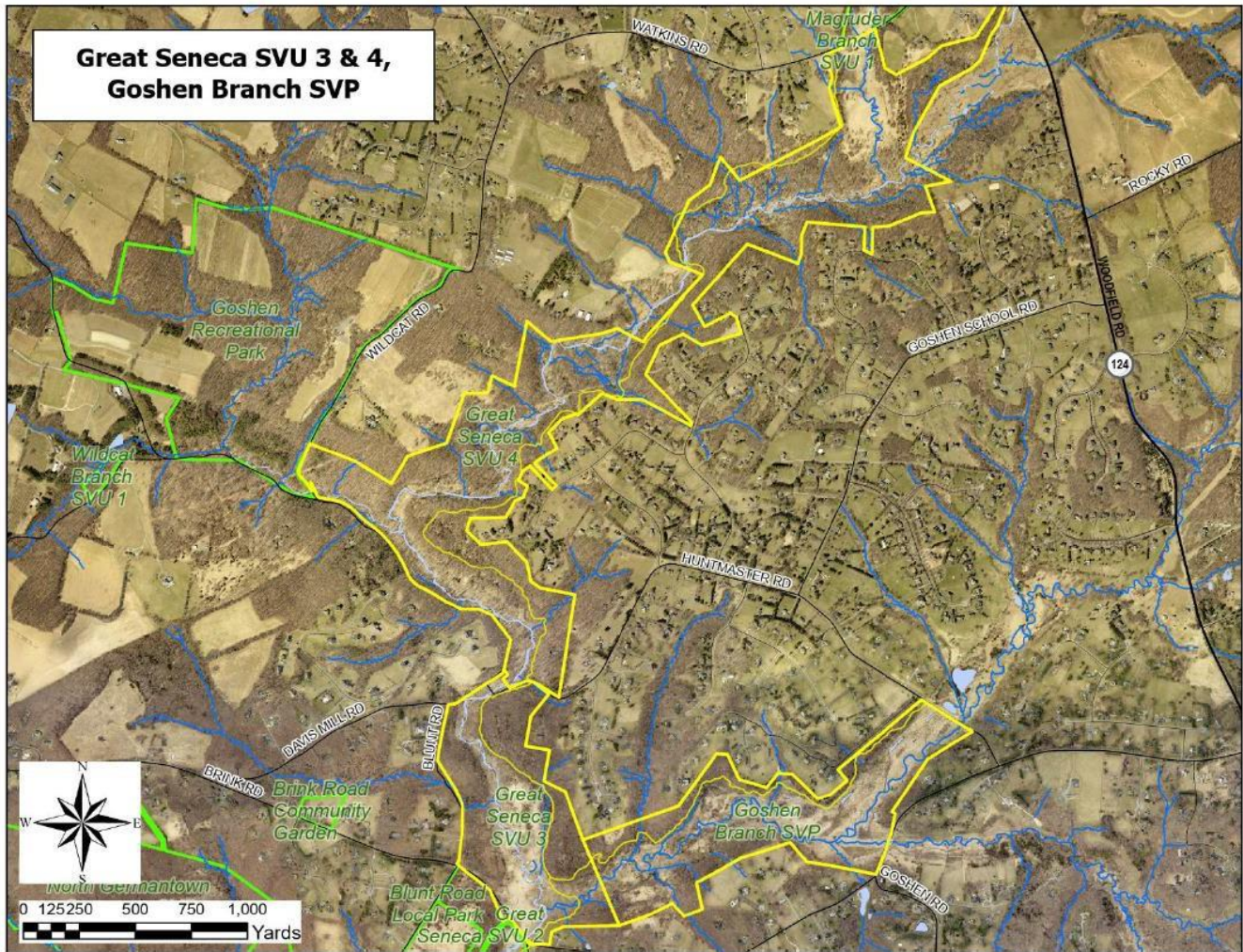
Blockhouse Point Conservation Park (BPCP) – Darnestown, MD



## MONTGOMERY PARKS

The Maryland-National Capital Park and Planning Commission  
Waters House | 12535 Milestone Manor Lane | Germantown, MD 20876  
MontgomeryParks.org

Great Seneca Stream Valley Units 3-4/Goshen Branch Stream Valley Park (GSSVP 3-4/GBSVP) –  
Gaithersburg/Germantown, MD

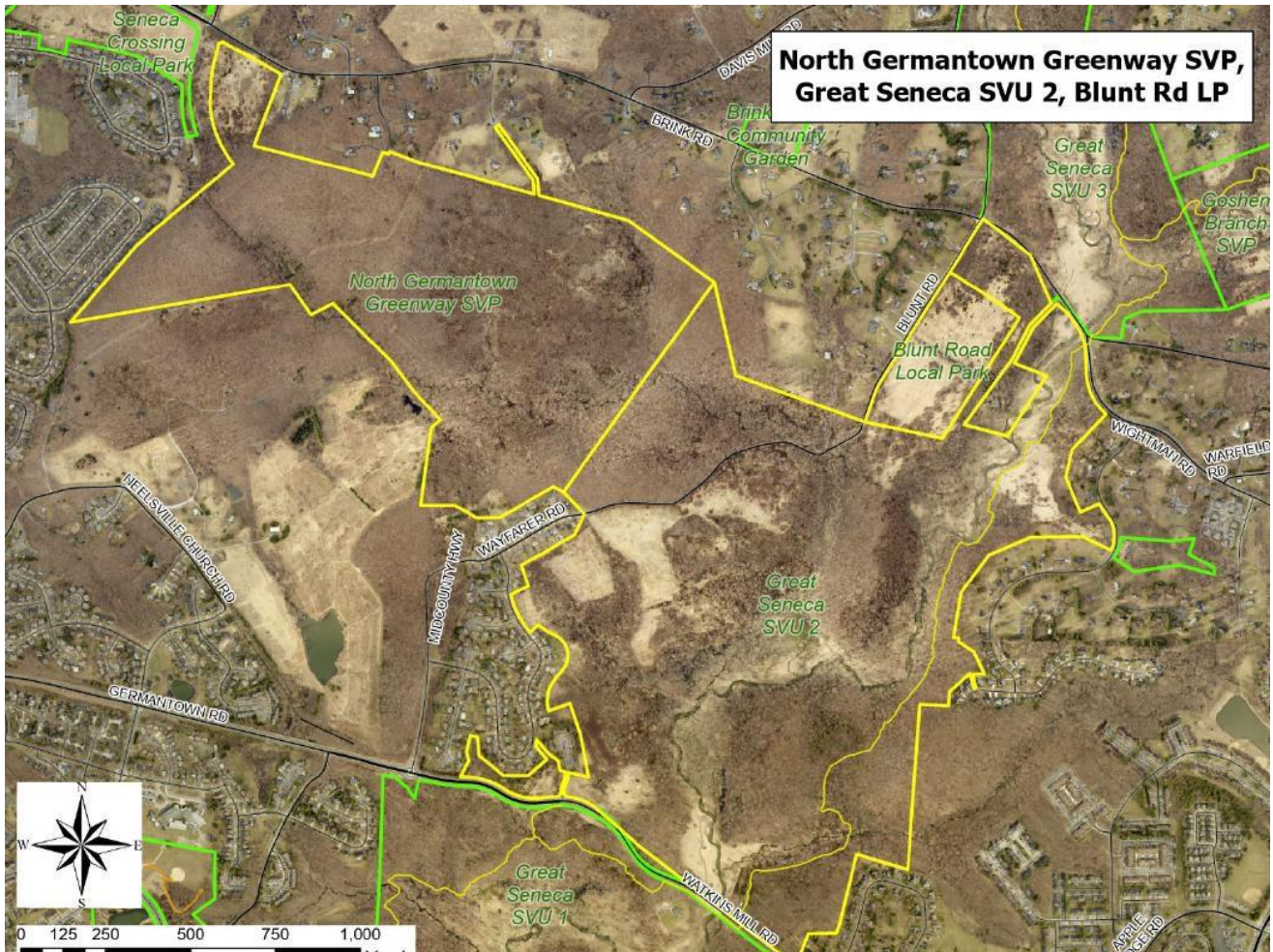




## MONTGOMERY PARKS

The Maryland-National Capital Park and Planning Commission  
Waters House | 12535 Milestone Manor Lane | Germantown, MD 20876  
MontgomeryParks.org

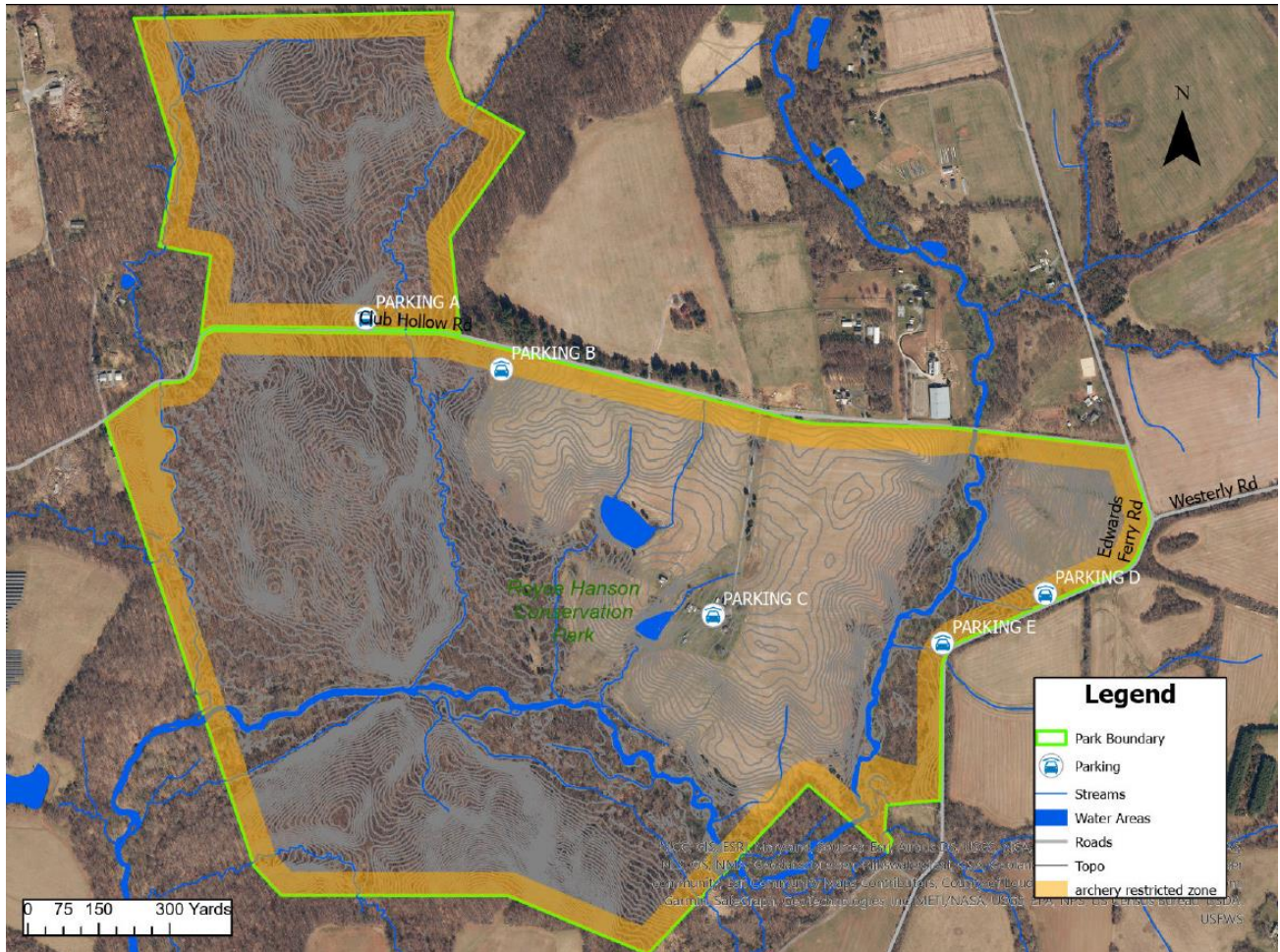
North Germantown Greenway/Great Seneca Stream Valley Park Unit 2 (NGG/GSSVP2) –  
Germantown, MD



## MONTGOMERY PARKS

The Maryland-National Capital Park and Planning Commission  
Waters House | 12535 Milestone Manor Lane | Germantown, MD 20876  
MontgomeryParks.org

### Royce Hanson Conservation Park at Broad Run (RHCP-BR) – Dickerson, MD



For more information, see <http://www.parksdeermanagement.org> and click the link to access the password protected page (Approved Managed Hunt Participant Log-In) containing maps and other information for approved Managed Deer Hunting Program participants.

### The Managed Hunting Program Lottery Explained

The Managed Hunting Program Lottery is intended to provide a fair system for the selection of hunting participants based on a drawing of random numbers annually. There will be two lotteries; one for managed firearms hunting (3 parks) and one for managed archery hunting (4 parks). The archery lottery will be drawn **separately** from the firearms lottery. For the archery lottery, individuals OR groups (up to 3) will be permitted to apply. It is important to note that for individuals who are part of a group that may be applying to lottery-firearms hunts but not all members of that group are interested in applying for the archery lottery, those individuals may apply to the archery lottery separately, either as an individual or part of another group. Lottery drawings for archery will not impact Lottery drawings for firearms. For the 2024 Archery Lottery, there will be a **maximum number of available opportunities** to be drawn and assigned at each park: BPCP will allow for 25 participants, NGG/GSSVP2 will allow for 25 participants, GSSVP 3- 4/GBSVP will allow for 15 participants, and RHCP-BR will allow for 20 participants.

In the spring of 2009, and again in 2020, a survey was sent to existing participants. These surveys included questions regarding the Managed Hunting Program Lottery, and participant attitudes and perceptions of the Lottery System. Within the 2020 survey, results showed 85% of Lottery Program participants rated the lottery as “good” to “excellent”. This is encouraging, but it should be noted that there is no guarantee of selection. This is still a random system, and results are based on computer generated random number lists.

To aid your understanding, here are the nuts and bolts of the Lottery:

- Applications are numbered in the order by which they are received.
- Group applications are assigned one application number (assuring fair chance for selection for individual applicants).  
**NOTE: *There is neither advantage nor disadvantage to applying as a group.***
- Applicant numbers are drawn at random using a random number generator (<https://www.random.org/>).

## MONTGOMERY PARKS

The Maryland-National Capital Park and Planning Commission  
Waters House | 12535 Milestone Manor Lane | Germantown, MD 20876  
MontgomeryParks.org



### (Random Number Generator)

Some additional considerations:

- Staff makes every reasonable effort to assure a fair system for all program participants.
- Not every participant will have a successful hunting experience on a given day. Please do not blame and/or harass staff for lack of success. After all, this is *hunting!*
- If you feel a complaint is warranted or necessary, please contact Andy by phone or email.

## MONTGOMERY PARKS

The Maryland-National Capital Park and Planning Commission  
Waters House | 12535 Milestone Manor Lane | Germantown, MD 20876  
MontgomeryParks.org

### Scouting Activities

After you receive confirmation from Montgomery Parks Deer Management Staff that you have been selected for participation, a scouting period will open at all designated archery parks. For 2024, that period will **begin on Thursday, August 1st** and **end on Friday, February 28th**.

- Scouting is to occur during daylight hours only and access is only permitted from designated parking areas. **NOTE: For Blockhouse Point CP, the Gorky Drive access point will be closed to parking for scouting activities**
- Pre-season scouting is not required by program staff, but it is highly encouraged. It is your responsibility to be extremely familiar with park boundaries, trails, restricted areas, and all official parking access points and max vehicle capacities at these locations.
- Efforts should be made to remain discreet while scouting. Carpooling with other participants is recommended to reduce traffic and disturbance to the parks.
- In-season scouting, when necessary, is encouraged to be conducted **during midday hours** AND be **kept at a minimum as to minimize disturbance**. All scouting requirements and recommendations noted in the section above under “Pre-Season Scouting Activities” pertain to in-season scouting as well.
- Trail cameras (w/participant labels) may be utilized beginning August 1 and must be removed by February 28<sup>th</sup>.

**Participants should not hunt an area unless they have scouted it prior.** *If you have any further questions regarding scouting information, please call Andy Simmons at (301) 962-1352. It is the responsibility of the participant to become familiar with all aspects of the hunting area.*

## Mandatory Procedures During the Season

### 1. Hunt Assignments

Hunting may only occur **Monday-Saturday, only**. No hunting is to occur outside of these days! Please be aware that there may be possible closures during this period which staff will make group leaders aware of. **For 2024**, there will be **NO HUNTING** at the following locations on these dates:

- Blockhouse Point CP: **October 12<sup>th</sup>, October 13<sup>th</sup>, and November 9<sup>th</sup>.**
- NGG/GSSVP2: **October 12<sup>th</sup>, October 13<sup>th</sup>**
- GSSVP 3-4/GBSVP: **October 12<sup>th</sup>, October 13<sup>th</sup>**
- Royce Hanson CP: **November 30<sup>th</sup> through January 10<sup>th</sup>**

These are known dates of running/cycling events that affect the selected parks, as well as pre-scheduled firearms hunt dates (at RHCP-BR only). Outside of these dates, Managed Hunt Program staff will notify you of any additional dates that may potentially affect hunting.

### 2. Mandatory Reporting

Participants must complete the online “Montgomery Parks Lottery Archery Field Notes & Harvest Log” no more than 24 hours after each hunt. This must be completed every hunt regardless of harvest success (does not include scouting). NOTE: Each participant will be provided a link, by email, to this online form. Please store this link in a safe place. The password to access this form is: **AP2024**. Use public land code 655 when checking deer as required by Maryland DNR.

### 3. Hunter Check-in/Check-out with Park Police

All participants must check in/out with park police for every hunt day via online form

### 4. Permits, Program ID, and Parking Tags

Permits and Program ID's will be issued to you during the pre-season meeting. Participants must visibly wear their issued Program I.D. Permit Badge at all times while on the ground (lanyard or tag holder recommended). A parking tag will also be issued to you. This must be visible in your parked vehicle while hunting at Blockhouse Points Conservation Park. Please refer to maps provided on the secure webpage for information about designated parking locations and maximum hunt participant vehicles allotted at each.

## MONTGOMERY PARKS

The Maryland-National Capital Park and Planning Commission  
Waters House | 12535 Milestone Manor Lane | Germantown, MD 20876  
MontgomeryParks.org

### 5. Participation

A minimum level of participation of 3 calendar dates (AM or PM hunts) is required. Those who do not meet this expectation may jeopardize their eligibility to apply for the following season.

### Essential Safety Measures

It cannot be stressed enough: Safety is the #1 priority of this program! Please keep the following safety measures in mind at all times. Remind yourself, your hunting partners, and your fellow participants to observe them continuously.

- ✓ You must wear a full body safety harness attached to tree or life-line at all times, while climbing, hunting and descending during treestand/saddle use
- ✓ All hunting shall occur from portable, commercially manufactured treestands/saddles only at a minimum platform height of 10 feet from the ground
- ✓ Hang-on style, climbing stands and saddles permitted ONLY. Treestands must be removed at the end of each hunt and are not to be left in the tree or in the park unattended at any time
- ✓ Locate any and all posted Safety Zone signs and DO NOT release an arrow or bolt at deer beyond these signs.
- ✓ Be familiar with safety zone boundaries, locations of hiking trails, etc. (do not hunt if you are not familiar with the area).
- ✓ Be 100% sure of your target AND what is beyond it.
- ✓ All shots should be directed to the ground.
- ✓ Shoot only at deer that are within 30 yards of your stand.
- ✓ Shoot only at stationary targets. DO NOT shoot at deer that are running or bounding.
- ✓ NEVER shoot at deer that are on the horizon line (i.e. deer on the top of a hill).
- ✓ Minimize shots fired and take ONLY ethical shots with the maximum probability of quick expiration of the deer.
- ✓ You must wear the State-required amount of fluorescent orange (*both* an orange hat and vest are strongly recommended!) during periods when the MD Archery season overlaps with any MD Firearms seasons. NO EXCUSES

Do not allow yourself to fall asleep while in your tree stand. If necessary, stop hunting and return to the ground until you are sufficiently awake to continue safely. Only then should you return to hunting height and begin hunting.

### What to do After the Shot

After you shoot a deer, you may investigate the results of the shot(s) following these guidelines:

- ✓ If possible, check on downed deer using binoculars from your tree stand/saddle.
- ✓ You may climb down to go investigate the result of your shot(s) and/or inspect downed deer. Please keep in mind:
  - You must lower your compound bow/crossbow and leave it at the base of the tree at your site.
  - You may NEVER hunt, carry a loaded compound bow/crossbow, and/or discharge your compound bow/crossbow while on the ground.
- ✓ Follow-up shots on the ground are not to be taken without prior consent or assistance of Park Police (or Wildlife Staff if available)
- ✓ Tracking dogs may be used only when absolutely necessary and must remain on a leash
- ✓ If a deer is wounded and travels across the property line, participants must contact Park Police to request direction and/or assistance. Participants must NOT enter another property without the assistance of Park Police (301-949-8010). Additionally, if removal of harvested deer will require participants to remain in the park more than one half hour following hunting hours, Park Police Dispatch must be notified of the situation.
- ✓ All field dressing/evisceration must occur away from roads, trails, and high visibility areas (Viscera to be covered with sticks and/or leaf litter). Please be sure to exercise caution and be discrete when removing harvested deer from the field.

**NOTE:** Every reasonable effort must be made to recover wounded deer. Each year, Staff has noted at least some level of wounding loss of deer by participants. It is our direct intention to minimize this unfortunate occurrence. As such, please be utmost, responsible hunters and give these animals the respect they deserve. Only take the highest percentage shots at well-identified, stationary deer! If you shoot a deer and can see from your stand that it is wounded, it is typically best to give that animal ample amount of time depending on the hit. Participants are responsible for removing their own harvested deer from the field and should be prepared to do so (i.e. bring deer drags, sleds, pull carts, etc.). Deer carcasses must be fully covered during removal, loading and transport process (No ATV use permitted). Once checked, deer should be transported away from the park **discretely** (i.e. covered with a tarp on a trailer or rack and/or in the bed of a pick-up truck).

**NOTE:** Montgomery County is now included in the state's CWD Management Area. Participants must be familiar with pertinent state guidelines found on MD DNR's "Chronic Wasting Disease in Maryland" page. Click [HERE](#) for more information. If Maryland is not the hunter's home state, it is their responsibility to be aware, and follow their home state's laws regarding chronic wasting disease (CWD) and importation of deer harvested in MD.



## MONTGOMERY PARKS

The Maryland-National Capital Park and Planning Commission  
Waters House | 12535 Milestone Manor Lane | Germantown, MD 20876  
MontgomeryParks.org

### Staff and Contact Info

#### Meet your Managed Deer Hunting Program Managers:



**Andy Simmons**  
Natural Resources  
Specialist II with the  
Department of Parks'  
Wildlife Ecology &  
Management Unit

Andy is the is the manager and contact point for this program. He will oversee all operational procedures, data collection, enforcement, etc.



**David Petersen**  
Senior Natural Resources  
Specialist III with the  
Department of Parks'  
Wildlife Ecology &  
Management Unit

David is the secondary point of contact for this program.



**Ryan Butler**  
Natural Resources  
Specialist IV and  
Department of Parks'  
Wildlife Ecology &  
Management Unit Leader

Ryan is responsible for overseeing all aspects of the Wildlife Ecology & Management Work Program.

#### Contact Information

**Andy Simmons**

(Cell) 240-507-3722  
(Office) 301-962-1352 (primary contact #)

**David Petersen** (Only if Andy is not available)  
(Office) 301-962-1351 (primary contact #)  
(Cell) 240-338-3923

## MONTGOMERY PARKS

The Maryland-National Capital Park and Planning Commission  
Waters House | 12535 Milestone Manor Lane | Germantown, MD 20876  
MontgomeryParks.org

### Participant Interaction with the Public

Participants should make every effort to be as discrete as possible across all elements of this program. In general, while hunting, participant encounters with members of the public are minimal, but they do occur. If you observe or encounter citizens:

- Participants must be polite, courteous and accommodating
- Participants must yield right of way to any and all trail users
- If park users are confrontational and/or ask questions to which you do not know the answers, please always remain calm and courteous and provide contact information for Parks Customer Service (business cards will be provided for distribution)
- Citizen interactions must be recorded in online “Montgomery Parks Archery Field Notes & Harvest Log”

Most importantly, in all cases, remain calm, collected and courteous. You are a permitted participant in a Department of Parks sanctioned program. If you encounter members of the media, call Wildlife Staff immediately. Act discretely and discontinue your activity until you receive instruction from Wildlife Staff to resume. If questioned or confronted, explain that they will need to speak to Park Staff for any additional information (you may provide them with the phone number on the back of the permit card). Do not speak to them further unless informed to do so by Wildlife Staff.

In all cases, **do not continue hunting and/or shooting until you are sure that citizens are safely clear of the area.**

### Illegal activity

It is possible you may observe or encounter illegal activity, whether that be hunting related or non-hunting related. Report illegal activity to park police and note on harvest/observation form, as well as the Field Maps mobile app.

- Illegal hunting should be reported to park police when you witness it actively in progress
- Evidence of illegal hunting (treestands, feeders etc.) should be reported directly to Andrew Simmons (andrew.simmons@montgomeryparks.org) with precise location information (lat/long. or pin marker is best)
- DO NOT remove or otherwise tamper with illegal hunting equipment

## MONTGOMERY PARKS

The Maryland-National Capital Park and Planning Commission  
Waters House | 12535 Milestone Manor Lane | Germantown, MD 20876  
MontgomeryParks.org

### **Bag Limits and Antler Restrictions**

This program allows the harvest of an unlimited number of antlerless deer while restricting the harvest of antlered bucks (see below for specific bag limits). We ask that you observe all deer very carefully prior to taking any shot in an effort to accurately distinguish between the sexes. The harvest goals of this program dictate that adult female deer are targeted. This is because these animals are the primary producers in the reproductive cycle. One of the goals of this program is to encourage healthy breeding ecology within the local deer herd. This means that we strive to achieve a balanced buck/doe ratio and a balanced age structure with representatives from each age class, while reducing the overall population.

#### **Bag Limits**

Unlimited antlerless deer. At least 1 antlerless deer must be harvested prior to the harvest of each antlered deer for a maximum of 4 antlered deer (e.g., antlerless, antlered, antlerless, antlered, etc. 2 antlerless/2 antlered etc. OR an equivalent ratio of antlerless to antlered with at least 1 antlerless harvested prior to the first antlered deer harvest). **NOTE:** Only 1 antlered deer may be harvested per day!

#### **Antler Restrictions**

For this program, there are no required antler restrictions, although we encourage harvest of mature antlered deer only.

## MONTGOMERY PARKS

The Maryland-National Capital Park and Planning Commission  
Waters House | 12535 Milestone Manor Lane | Germantown, MD 20876  
MontgomeryParks.org

### Wrap Up

Thank you for taking the time to thoroughly read these guidelines. Please refer to them often.

In preparation for, and throughout the coming season, please use the logic: “If in doubt, find out!” Do not act on assumptions. Ask questions if, and when necessary! You may contact Wildlife Staff at 301-962-1352 or [MCP-deermanagement@montgomeryparks.org](mailto:MCP-deermanagement@montgomeryparks.org). For urgent reasons, you may contact Andy on his work cell at 240-507-3722.

Only **you are responsible** for your own decisions and actions. Through your hunting activities on parkland, you are representing yourself and the Montgomery Parks Managed Deer Hunting Program. Please do your part to ensure the continuation of this program and the enjoyment of yourself and your fellow hunters for many years to come. Hunt SAFELY and best of luck to you!

