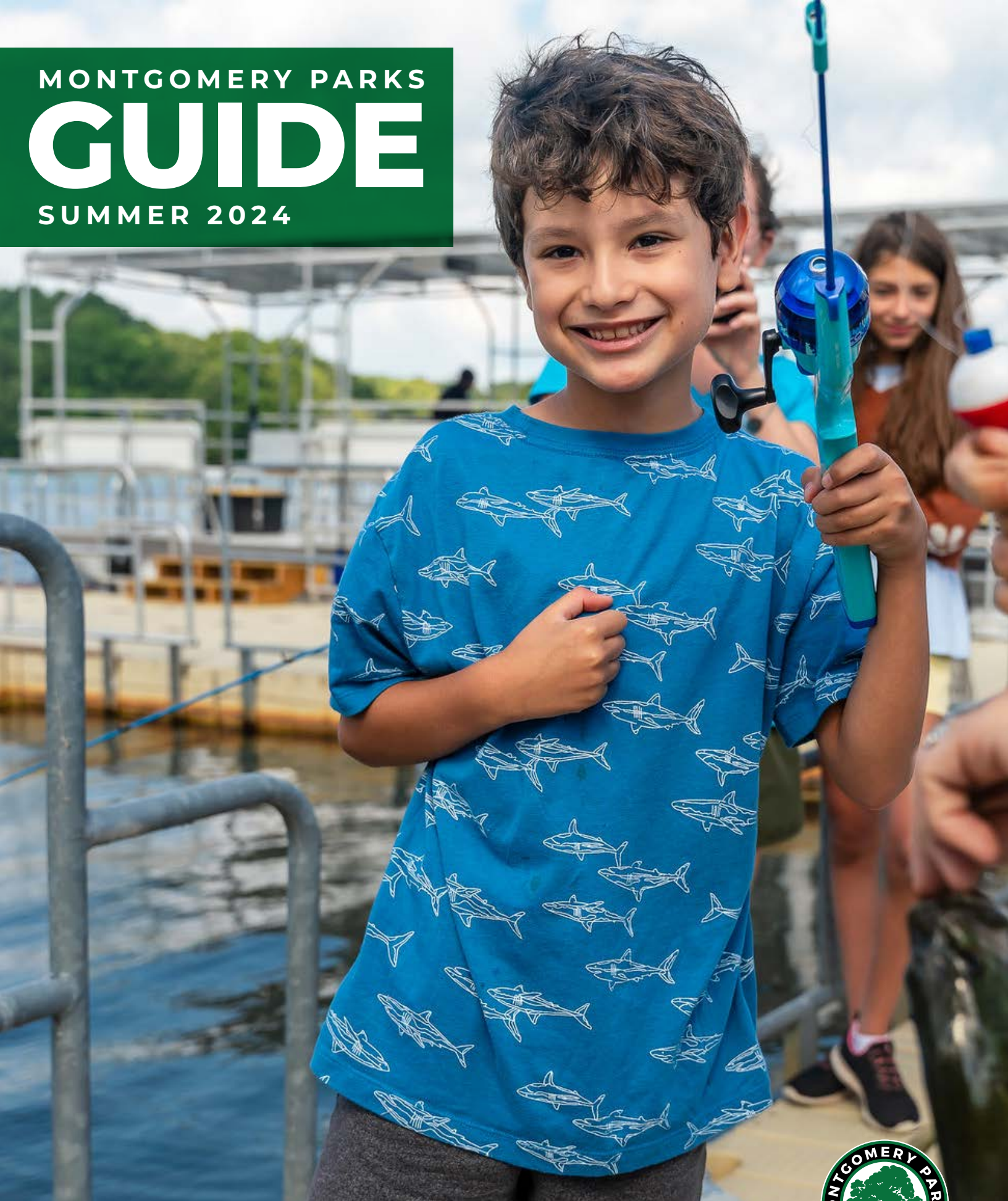


MONTGOMERY PARKS  
**GUIDE**  
SUMMER 2024



CLASSES. PROGRAMS. ACTIVITIES. EVENTS.





## MONTGOMERY PARKS | SUMMER 2024

### Agricultural & Historical Programs

- 18 Agricultural History Farm Park
- 19 Josiah Henson Museum & Park
- 22 Oakley Cabin African American Museum & Park
- 23 Woodlawn Manor Cultural Park

### Nature & Horticultural Programs

- 35 Brookside Gardens
- 46 Black Hill Discovery Center
- 54 Brookside Nature Center
- 55 Locust Grove Nature Center
- 57 Maydale Nature Classroom
- 60 Meadowside Nature Center  
(building closed for renovations)

### Sports Programs

- 66 Golf & Archery at South Germantown Driving Range
- 70 Ice Skating and Hockey at Cabin John and Wheaton Ice
- 88 Tennis at Pauline Betz Addie and Wheaton Indoor Tennis

### More to Do in the Parks

- 7 Volunteer Opportunities
- 8 Rainout Line
- 9 Build Your Own Guide
- 10 Park Activity Buildings & Picnic Shelters
- 11 Event Centers
- 12 Little Bennett Campground
- 13 Montgomery Parks Employment
- 14 Trains and Carousel
- 15 Parks Playhouse Junior
- 16 Parks Summer Concert Series
- 17 Roots to Rocks
- 27 55+ Programs
- 31 Adaptive Programs
- 33 Park Academy Series
- 45 Brookside Gardens Summer Twilight Concert Series
- 53 Mudfest
- 65 Boating and SplashPark

### Information & Registration

- 3 Montgomery Parks Facility Directory
- 98 Registration Information

**Programs are subject to change.**

**For the most up-to-date listings visit: [MontgomeryParks.org](https://MontgomeryParks.org)**



# MONTGOMERY PARKS DIRECTORY

## ATHLETIC FIELDS

Visit [Athletic Fields](#) for reservation information.

## ARCHERY

### [South Germantown Recreational Park](#)

18045 Central Park Circle, Boyds, MD 20841

### [Rock Creek Regional Park](#)

5700 Needwood Lake Circle, Rockville, MD 20855

## BASKETBALL, TENNIS & PICKLEBALL COURTS (OUTDOOR)

Visit [Sports](#) for a list of court locations.

## BOATING

### [Black Hill Boats](#)

20920 Lake Ridge Drive, Boyds, MD 20841 • 301-528-3466

### [Lake Needwood Boats](#)

15700 Needwood Lake Circle, Rockville, MD 20855  
301-563-7540

## CAMPING

### [Little Bennett Campground](#)

23705 Frederick Road, Clarksburg, MD 20871  
301-528-3430

### [Robert C. McDonell Campground](#)

7701 Tuckerman Lane, Rockville, MD 20854 • 301-495-2525

Visit [Rentals and Permits](#) for additional camping options.

## CAROUSEL

### [Ovid Hazen Wells Carousel](#)

2002 Shorefield Road, Wheaton, MD 20902

## COMMUNITY GARDENS

Visit [Community Gardens](#) for information.

## CULTURAL & HISTORIC ATTRACTIONS

Visit [History in the Parks](#) for more information.

### [Agricultural History Farm Park](#)

18400 Muncaster Road, Derwood, MD 20855  
301-840-5120

### [Kingsley Schoolhouse](#)

24472 Clarksburg Road, Clarksburg, MD 20871  
301-650-4373

### [Josiah Henson Museum & Park](#)

11410 Old Georgetown Road, North Bethesda, MD 20852  
301-765-8790

### [Oakley Cabin African American Museum](#)

3610 Brookeville Road, Olney, MD 20832  
301-650-4373

### [Woodlawn Manor Cultural Park](#) and [Underground Railroad Experience Trail](#)

16501 Norwood Road, Sandy Spring, MD 20860  
301-929-5989

## DOG PARKS

### [Black Hill Regional Park Dog Park](#)

20930 Lake Ridge Drive, Boyds, MD 20841  
On Picnic Lane, SE of boat rentals on Lake Ridge Drive

### [Cabin John Regional Park Dog Park](#)

7400 Tuckerman Lane, Bethesda, MD 20817

### [Dewey Local Park Dog Park](#)

1720 Dewey Road, Silver Spring, MD 20906

### [Ellsworth Urban Park Dog Park](#)

621 Ellsworth Drive, Silver Spring, MD 20910

### [Olney Manor Recreational Park Dog Park](#)

16601 Georgia Avenue, Olney, MD 20832

### [Piedmont Woods Local Park Dog Park](#)

12835 Snowden Farm Parkway, Clarksburg, MD 20871

### [Ridge Road Recreational Park Dog Park](#)

21155 Frederick Road, Germantown, MD 20876

### [Wheaton Regional Park Dog Park](#)

11710 Orebaugh Avenue, Wheaton, MD 20902

## DRIVING RANGE/GOLF

### [South Germantown Driving Range](#)

18045 Central Park Circle, Boyds, MD 20841  
301-670-4670

## EVENT CENTERS

*Ideal venues for weddings, special events, meetings and more!*

### [Brookside Gardens](#)

1800 Glenallan Avenue, Wheaton, MD 20902  
301-962-1404

Email: [Event.Manager@MontgomeryParks.org](mailto:Event.Manager@MontgomeryParks.org)

### [The Lodge at Little Seneca Creek](#)

14500-A Clopper Road, Boyds, MD 20841  
301-528-6010

Email: [SenecaLodge@MontgomeryParks.org](mailto:SenecaLodge@MontgomeryParks.org)

### [Rockwood Manor Retreats and Events](#)

11001 MacArthur Boulevard, Potomac, MD 20854  
301-563-7510

Email: [RockwoodManor@MontgomeryParks.org](mailto:RockwoodManor@MontgomeryParks.org)

**GARDENS**

[Brookside Gardens](#)

1800 Glenallan Avenue, Wheaton, MD 20902  
301-962-1400 general information  
301-962-1404 event rentals

[McCrillis Gardens](#)

6910 Greentree Road, Bethesda, MD 20817  
301-962-1455

**GOLF**

*Golf courses are operated by the [Montgomery County Revenue Authority](#).*

[Little Bennett Golf Course](#)

25900 Prescott Road Clarksburg, Maryland 20871  
301-253-1515

[Needwood Golf Course](#)

6724 Needwood Road, Derwood, MD 20855  
301-948-1075

[Northwest Park Golf Course](#)

15711 Layhill Road, Silver Spring, MD 20906  
301-598-6100

[Sligo Creek Golf Course](#)

9701 Sligo Creek Parkway, Silver Spring, MD 20901  
301-585-6006

**HORSEBACK RIDING & STABLES**

*Equestrian facilities are managed by private operators through partnerships with M-NCPPC.*

[Callithea Farm Park](#)

15000 River Road, Potomac, MD 20854  
301-977-8010

[Meadowbrook Riding Stables](#)

8200 Meadowbrook Lane, Chevy Chase, MD 20815  
301-589-9026

[Potomac Horse Center](#)

14211 Quince Orchard Road, N. Potomac, MD 20878

[Rickman Farm Horse Park](#)

17320 Moore Road, Boyds, MD 20841  
301-349-0075

[Wheaton Regional Park Stables](#)

1101 Glenallen Avenue, Wheaton, MD 20902  
301-622-2424

[Woodstock Equestrian Park](#)

20100 Darnestown Road, Beallsville, MD 20839  
301-495-2525

**ICE SKATING**

[Cabin John Ice Rink](#)

10610 Westlake Drive, Rockville, MD 20852  
301-765-8620

[Wheaton Ice Arena](#)

11717 Orebaugh Avenue, Wheaton, MD 20902  
301-905-3000

**MINIATURE GOLF**

[South Germantown Miniature Golf](#)

18056 Central Park Circle, Boyds, MD 20841  
301-670-4680

**NATURE CENTERS**

[Black Hill Visitor Center](#)

20926 Lake Ridge Drive, Boyds, MD 20841  
301-528-3492

[Brookside Nature Center](#)

1400 Glenallan Avenue, Wheaton, MD 20902  
301-962-1480

[Locust Grove Nature Center](#)

7777 Democracy Boulevard, Bethesda, MD 20817  
301-765-8660

[Maydale Nature Classroom](#)

1638 Maydale Drive, Colesville, MD 20905  
301-962-1496

[Meadowside Nature Center](#)

5100 Meadowside Lane, Rockville, MD 20855  
301-258-4030

**PARK ACTIVITY BUILDINGS & PICNIC SHELTERS**

Visit [Park Permits](#) for rental information.

**SKATING AND BMX**

*In-line Hockey Rink*

[Dewey Local Park](#)

11720 Dewey Road, Veirs Mill, MD 20906

[Ridge Road Recreational Park](#)

21155, Frederick Road, Germantown, MD 20876

*Mountain Bike and BMX Pump Track*

[South Germantown Recreational Park](#)

18045 Central Park Circle, Boyds, MD 20841

**SKATING AND BMX (CONTINUED)**

**Skate Park**

**Fairland Recreational Park**  
**The Pit at Fairland Bike Park**

3928 Greencastle Road  
 Fairland, MD 20866

**Olney Manor Skate Park**

16601 Georgia Avenue, Olney, MD 20832

**Takoma-Piney Branch Local Park**

2 Darwin Avenue Takoma Park, MD 20910

**Woodside Urban Park**

8800 Georgia Avenue, Silver Spring, MD 20910

**SPLASH PARK**

**South Germantown SplashPark**

18056 Central Park Circle, Boyds, MD 20841  
 301-670-4680

**TENNIS (INDOOR)**

**Pauline Betz Addie Tennis Center**

7801 Democracy Boulevard, Bethesda, MD 20817  
 301-765-8650

**Wheaton Indoor Tennis**

11715 Orebaugh Avenue, Wheaton, MD 20902  
 301-905-3030

**Montgomery TennisPlex\***

18010 Central Park Circle, Boyds, MD 20841  
 240-477-4430z

*\* This facility is managed by a private operator through a partnership with M-NCPPC. Please contact them directly for more information.*

**TRAILS**

Visit [Trails](#) for maps and detailed information about the more than 250 miles of trails in Montgomery Parks.

**TRAINS (MINIATURE)**

**Cabin John Miniature Train**

7410 Tuckerman Lane, Rockville, MD 20852  
 301-765-8670 • 301-650-2880 party rentals

**Wheaton Train and Carousel**

2002 Shorefield Road, Wheaton, MD 20902  
 301-563-7545 • 301-650-2880 party rentals

**TURF FIELD**

200' x 85' covered synthetic turf playing field; rent for soccer, lacrosse, futsal, parties and more.

**Wheaton Sports Pavilion**

11751 Orebaugh Avenue, Wheaton, MD 20902  
 301-905-3070

**CONTACT INFORMATION**

**Montgomery Parks**

2425 Reddie Drive, Wheaton, MD 20902

**Customer Service**

General park Information or to report maintenance requests or concern:

Call: 301-495-2595

Email: [Info@MontgomeryParks.org](mailto:Info@MontgomeryParks.org)

**Permits & Rentals**

Call: 301-495-2525

Email: [ParkPermits@MontgomeryParks.org](mailto:ParkPermits@MontgomeryParks.org)

**Volunteer Opportunities**

Call: 301-495-2504

Email: [ParksVolunteers@MontgomeryParks.org](mailto:ParksVolunteers@MontgomeryParks.org)

**RainoutLine**

Call: 301-579-5610 for Athletic Fields

Call: 240-270-0008 for Trail Conditions

**Park Police**

Call: 301-949-8010, Emergency call 911

Twitter: [@ParkPolice](https://twitter.com/ParkPolice)

**ACCESSIBILITY**

**Program Access & Inclusion Services**

For inquiries regarding inclusion services, programs, and accommodations, please contact the Program Access office:

Call: 301-495-2477

MD Relay: 7-1-1 or 800-552-7724

Email: [ProgramAccess@MontgomeryParks.org](mailto:ProgramAccess@MontgomeryParks.org)





## WAYS TO REGISTER

### Online

Click the Course # link next to each program in this guide to register for that program or visit **ActiveMONTGOMERY**

### By Mail

Fill out and sign the registration form and mail it to:

ActiveMONTGOMERY  
2425 Reddie Drive, 10th Floor  
Wheaton, MD 20902

### Questions?

Call: 301-495-2580  
Monday–Friday, 8:30 am–4:30 pm  
Visit [ActiveMontgomery.org](https://www.ActiveMontgomery.org) for answers to frequently-asked-questions.

## REGISTRATION DATES

Summer Programs: May 13, 6:30 am  
Ice/Tennis Summer Term: June 11,  
6:30 am



## VOLUNTEER IN PARKS

# Naturally!

## Volunteering in Montgomery Parks is such a natural thing to do!

Volunteering in Montgomery Parks is such a natural thing to do! We love the folks in our communities who get involved — and we think you'll love working with us, too.

Check out some of our summer volunteer opportunities below, and visit [ParksVolunteers.org](http://ParksVolunteers.org) for even more. **Apply today!**

*Thank you  
for all you do.*

★ *Stream Striders, Watershed Cleanup Leaders - Training provided*

Teach and lead volunteer groups in park cleanups, and show why it is important to keep our parks and streams litter free!

★ *Weed Warrior for a Day*

Work with Weed Warrior supervisors and help save the forest from non-native, invasive plants! Take what you learn and keep native plants in your neighborhood alive and growing.

★ *Ice Skating Instructional Assistant*

Help Group Lesson Instructors in our "Learn to Skate" program for children, looking for **experienced skaters!**

★ *Agricultural History Farm Park:*

- *Gardeners* - Assist with planting and maintaining interpretative and display gardens.
- *Docents* - Give public tours of the Farm Park, including historic home, outbuildings and the barn.
- *Special Event/Program Assistants* - Help with set-up, activities, and cleanup for special events; and assist staff with programs.

★ *Nature Center Gardeners*

Help us keep the gardens at our Nature Centers looking lovely.

★ *Kingsley School House Docents, Clarksburg -*

Lead visitors in old fashioned lessons on the three "Rs"—reading, 'riting & 'rithmetic at our historic one-room schoolhouse.

★ *Oakley Cabin Docents, Brookeville -*

Give tours of our 19th-century cabin that was home to free African Americans from Emancipation to the 20th century.

Looking for a great team building project for a corporate get-together, scout group, school project or other type of group?

Depending upon the size and age, location and availability of your group AND availability of our staff, we have projects that could include:

- Park Cleanups
- Invasive Plant Removal (Weed Warriors!)
- Natural Surface Trail Work
- Nature Centers Projects
- Special Event assistance
- Planting native plants
- Gardening/Weeding/Mulching
- Playground Maintenance

*We ♥ our  
volunteers!*



[ParksVolunteers.org](http://ParksVolunteers.org) | 301-495-2504



# Trails open? Game on?

Montgomery Parks  
has you covered.

When inclement weather occurs, use the **RainoutLine** system to get instant information on Montgomery Parks trails and athletic fields.

Three ways to access RainoutLine:

- 1 **Phone:** Trail Conditions: 240-270-0008 or Athletic Field Status: 301-579-5610
- 2 **Online:** Go to [MontgomeryParks.org/RainoutLine](https://MontgomeryParks.org/RainoutLine)
- 3 **App:** Download the free mobile app for your smartphone.

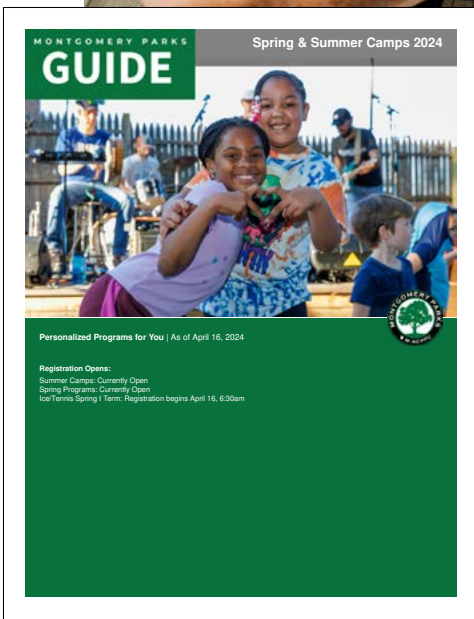
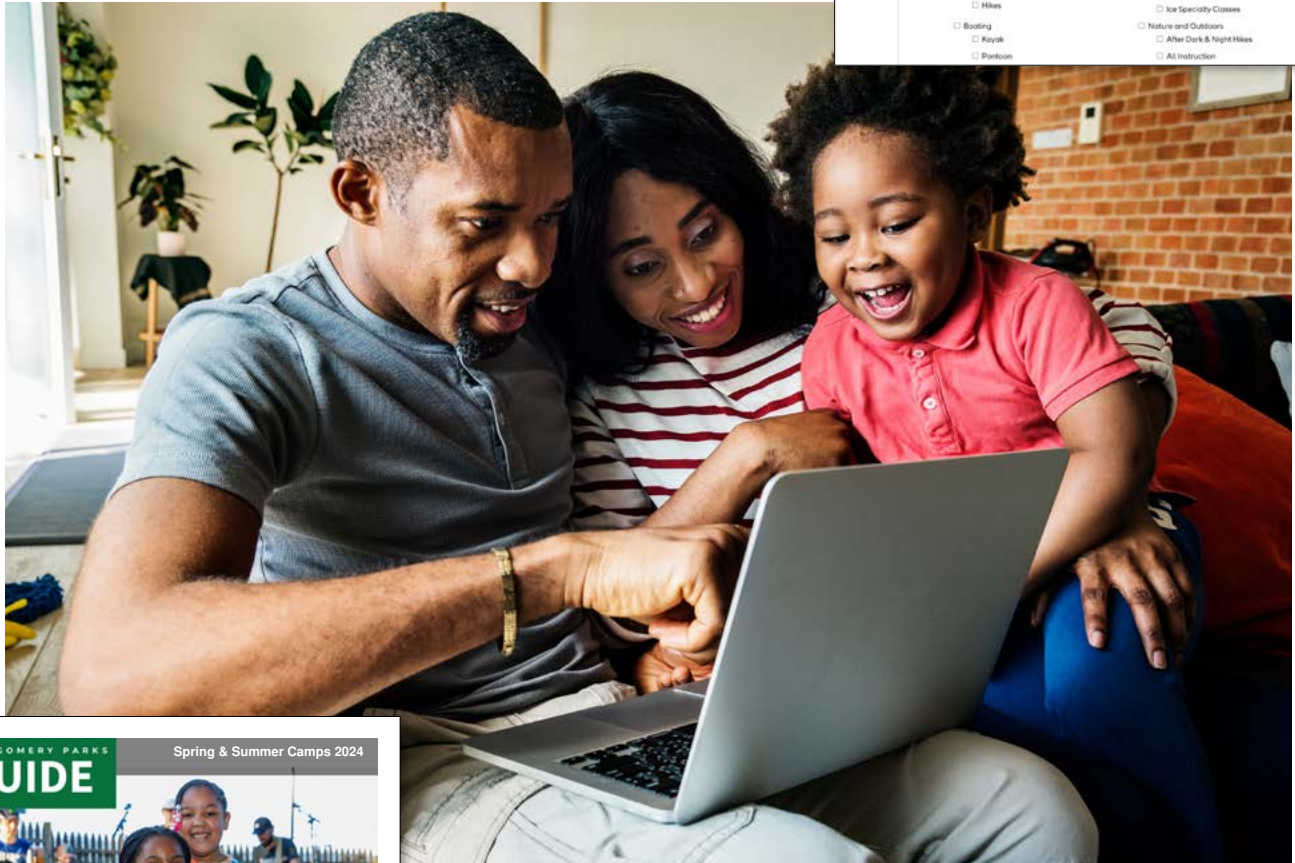
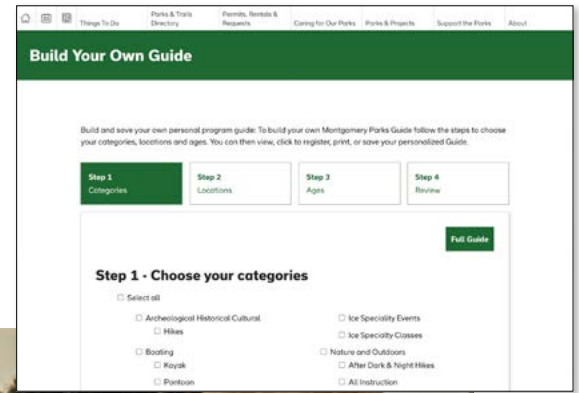
[MontgomeryParks.org/RainoutLine](https://MontgomeryParks.org/RainoutLine)

MONTGOMERY PARKS  
**Rainout Line**





# Build Your Own Guide!



- The new online Build Your Own Guide tool allows you to create a digital program guide customized to your specific interests.
- In just three easy steps, you can select the program categories, locations and age ranges you prefer, and then download or print your personalized guide at home.

[MontgomeryParks.org/Your-Guide](https://MontgomeryParks.org/Your-Guide)



# Montgomery Parks... the perfect place to gather!



BIRTHDAY PARTIES • RECEPTIONS • REUNIONS •  
NEIGHBORHOOD GATHERINGS • BUSINESS MEETINGS

Park Activity Buildings available  
year-round

Picnic Shelters available  
to rent April 1–October 31

Convenient and affordable, our **Park Activity Buildings** and **Picnic Shelters** provide all the amenities needed to make your next event enjoyable and hassle-free!



View availability  
and book online at  
[ActiveMontgomery.org](https://www.ActiveMontgomery.org)

## Contact the Park Permits Office for rental information

P: Monday–Friday, 8:30am–5pm | 301.495.2525

E: [ParkPermits@MontgomeryParks.org](mailto:ParkPermits@MontgomeryParks.org) | W: [ParkPermits.org](https://www.ParkPermits.org)

2425 Reddie Drive, 2nd Floor | Wheaton, MD 20902



[MontgomeryParks.org](https://www.MontgomeryParks.org)

# The natural choice for your special event!

Our event centers are the ideal venues for picture-perfect weddings, elegant celebrations, successful retreats, and more!

Available year-round at affordable rates.



## **BROOKSIDE GARDENS**

*50 acres of stunning garden areas*

1800 Glenallan Avenue | Wheaton, MD 20902  
301-962-1404 | [BrooksideGardens.org](http://BrooksideGardens.org)  
[event.manager@montgomeryparks.org](mailto:event.manager@montgomeryparks.org)



## **THE LODGE AT LITTLE SENECA CREEK**

*Rustic charm and beautiful panoramic views*

14500-A Clopper Road | Boyds, MD 20841  
301-670-3282 | [LodgeatSeneca.org](http://LodgeatSeneca.org)  
[senecalodge@montgomeryparks.org](mailto:senecalodge@montgomeryparks.org)



## **ROCKWOOD MANOR RETREATS & EVENTS**

*Serene estate just six minutes from the Capital Beltway*

11001 MacArthur Boulevard | Potomac, MD 20854  
301-563-7510 | [RockwoodManor.org](http://RockwoodManor.org)  
[rockwoodmanor@montgomeryparks.org](mailto:rockwoodmanor@montgomeryparks.org)

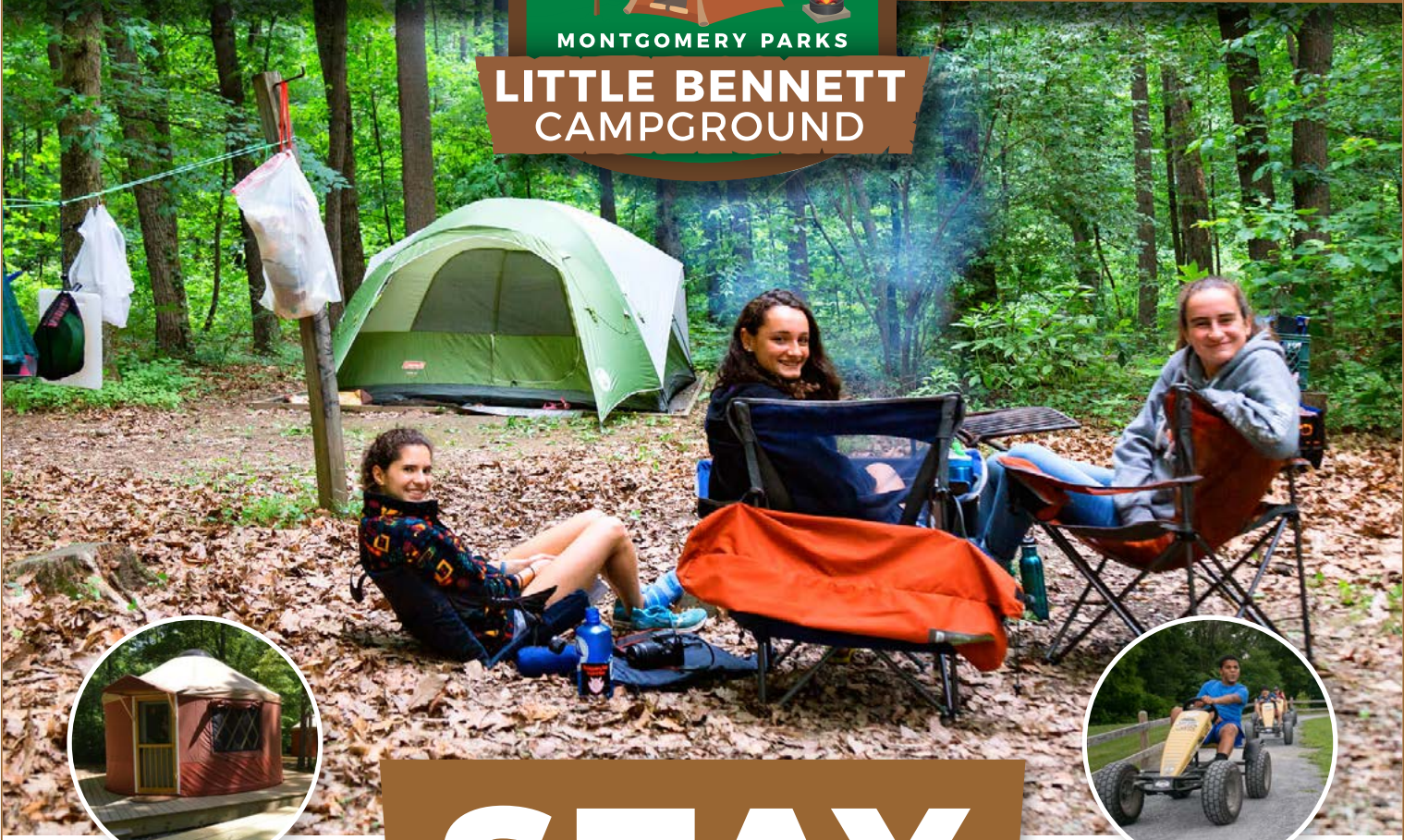


[ParkEventCenters.org](http://ParkEventCenters.org)





# LITTLE BENNETT CAMPGROUND



# STAY — & — PLAY

Range of accommodations including campsites, cabins, and yurts, to fit your needs

**OPEN YEAR-ROUND**

[ MINIMUM 2-NIGHT STAY ]

Hiking and biking trails, pedal kart track, jumping pillow, laser tag, outdoor movies, arts & crafts, and more!



**LITTLE BENNETT CAMPGROUND**  
23705 Frederick Road | Clarksburg, MD 20871  
[LittleBennettCampground.org](http://LittleBennettCampground.org)



YOUR NEXT  
*Adventure*  
STARTS HERE

**WORK**  
— FOR —  
**MONTGOMERY  
PARKS**

# NOW HIRING

Full-Time and Part-Time  
Positions in Park Operations,  
Management, Administration  
and more!

## Career & Full-Time Positions

- Park Maintenance
- Skilled Trades
- Heavy Equipment
- CDL Drivers
- Park Police Officers
- Admin Support
- IT - Telecom
- Horticulture
- Engineering/Planning
- Natural Resources

## Part-Time & Seasonal Staff Positions

Event Staff, Administration, Athletics Instructors,  
Camp Staff, Maintenance, Park Education

We offer a **competitive compensation package** with **exceptional benefits** that will provide security for you and your family through every stage of life.

Have Questions? Email us at  
[MCP-ParksCareers@montgomeryparks.org](mailto:MCP-ParksCareers@montgomeryparks.org)



To view all our open  
positions, scan the  
QR code or go to  
[MoCoParks.org/jobs](https://MoCoParks.org/jobs)





# All Aboard!

Enjoy a scenic two-mile ride on a Miniature Train or take a spin on the historic Ovid Hazen Wells Carousel.

For schedule and ticket information visit [MontgomeryParks.org/Trains](https://MontgomeryParks.org/Trains)



## **CABIN JOHN MINIATURE TRAIN**

Cabin John Regional Park 7410 Tuckerman Lane, Rockville, MD 20852

## **WHEATON MINIATURE TRAIN & CAROUSEL**

Wheaton Regional Park 2000 Shorefield Road Wheaton, MD 20902



MONTGOMERY PARKS

# PARKS Playhouse Junior

**Keep the kids moving and  
grooving this summer!**

The outdoor performance series returns  
with sing-a-longs, dance-a-longs,  
puppets, theater, and more!



For performance dates and locations,  
scan the QR code or visit  
**[MoCoParks.org/PlayhouseJr](https://MoCoParks.org/PlayhouseJr)**



Sign Language Interpretation will  
be provided at select events.





PARKS

# Summer Concert Series

**Live music is coming to your neighborhood!**



**Thursday nights, July 11–August 15 | 6–8pm**

Check out the performer lineup  
and park locations at

**[MoCoParks.org/SummerConcertSeries](http://MoCoParks.org/SummerConcertSeries)**







Montgomery Parks' Roots to Rocks program aims to increase access to mountain biking through safe and fun mountain biking opportunities.

- Participate in a Guided Trail Ride at your own skill level.
- Learn trail etiquette, bike safety, and mechanics.
- Improve your biking skills through a Ride Clinic.
- Discover the many health benefits of mountain biking.
- Enjoy the social interactions of group bike rides.
- Foster your appreciation for our environment.
- Bring your own bike, or borrow one of ours!

MONTGOMERY PARKS

# AGRICULTURAL HISTORY FARM PARK

Park grounds and trails open daily sunrise to sunset.

See the past, present, and future of Montgomery County's rich farming heritage at the **Agricultural History Farm Park**. This scenic 455-acre park features rolling hills, open fields, an apple orchard, and a variety of farm animals.

Visit [AgHistoryFarm.org](http://AgHistoryFarm.org) for programming and event information.

## AGRICULTURAL HISTORY FARM PARK

18400 Muncaster Road | Derwood, MD 20855

301-840-5120 | [AgHistoryFarm.org](http://AgHistoryFarm.org)



MONTGOMERY PARKS

WALK-INS WELCOME

# Josiah Henson Museum & Park



**Admission required. Tickets available onsite.**  
**Open Friday through Sunday**  
For hours and information visit [JosiahHenson.org](http://JosiahHenson.org)



Josiah Henson Museum & Park tells the story about the life and challenges of Reverend Josiah Henson, enslavement in Maryland, and the ongoing struggles of racial equality and justice.

Visit the museum and experience interactive multimedia exhibits. Explore the park and engage in personal or group reflection. Discover the archaeological sites throughout the park. Visit [JosiahHenson.org](http://JosiahHenson.org) for program and event information.



## JOSIAH HENSON MUSEUM & PARK

11410 Old Georgetown Road  
North Bethesda, Maryland 20852

301-765-8790 | [JosiahHenson.org](http://JosiahHenson.org)

Visitor Parking at Wall Local Park, 5900 Executive Blvd



JOSIAH  
HENSON  
MUSEUM  
& PARK



Montgomery Parks is dedicated to providing quality services and programs that are inclusive and accessible to all. ADA: [MontgomeryParks.org/accessibility](http://MontgomeryParks.org/accessibility)  
Non-Discrimination: [MontgomeryParks.org/about/parks/](http://MontgomeryParks.org/about/parks/)

f t i @MontgomeryParks  
[facebook.com/josiahhensonmuseum](http://facebook.com/josiahhensonmuseum)



**JOSIAH HENSON MUSEUM & PARK**



**JOSIAH HENSON MUSEUM & PARK**  
 11410 Old Georgetown Road | North Bethesda, MD 20852  
 301-765-8790  
 Open Friday through Sunday  
 For hours and information visit [JosiahHenson.org](https://JosiahHenson.org)

## SPECIAL EVENTS

### Henson Birthday Celebration

Kick off your Juneteenth Week by joining us to celebrate Josiah Henson’s birthday on June 15th! We’ll have fun hands-on activities, games, story times, and more! Admission is free; we look forward to celebrating with you!

*Josiah Henson Museum and Park*

Jun 15	Sat	10a-4p	All Ages	<a href="#">PJHMP0002-200003</a>
--------	-----	--------	----------	----------------------------------

### Special Opening - Juneteenth

What better way to celebrate Juneteenth than to visit the museum dedicated the man, Reverend Josiah Henson, who traveled along the Underground Railroad freeing 118 former enslaved persons. The museum will be open for special hours on Wednesday, June 19. Self-guided tours and special hands-on activities will be available for families. Admission, \$4 for children and seniors, and \$5 for adults. Tickets available onsite.

*Josiah Henson Museum and Park*

Jun 19	Wed	10a-4p	All Ages	<a href="#">PJHMP0002-200002</a>
--------	-----	--------	----------	----------------------------------

## SPEAKER SERIES

### Foodie Fridays

Foodie Fridays, organized by Montgomery Parks Community Garden Program, is a monthly speaker series focused on highlighting food-related topics as well as how the food system impacts residents of Montgomery County. This year, the series will focus on the five senses: hearing, smelling, tasting, feeling, and seeing. Speakers will share stories of the region’s foodways, explore the role of pollinators in agriculture, discuss forest agriculture and foraging, demonstrate the connections between food and mental health, and envision the future of farming in Montgomery County.

Attendees will have a chance to engage with regional food system experts and community members over light food and refreshments.

*Josiah Henson Museum and Park*

#### **Feed the Soul: Food & Mental Health**

Learn about the connections between eating, food, mental health, and wellbeing with Dr. Nicole Salman from Snapdragon Wellness.

Jun 28	Fri	6:30-8:30p	All Ages	\$15	1 Class	<a href="#">Purchase Tickets</a>
--------	-----	------------	----------	------	---------	----------------------------------

#### **Smell the Flowers: Pollinators & Agriculture**

Learn about the importance of pollinators in agriculture and local food systems.

Jul 26	Fri	6:30-8:30p	All Ages	\$15	1 Class	<a href="#">Purchase Tickets</a>
--------	-----	------------	----------	------	---------	----------------------------------

#### **Taste the Land: Forest Agriculture & Foraging**

Learn about food forests, forest agriculture, and foraging.

Aug 23	Fri	6:30-8:30p	All Ages	\$15	1 Class	<a href="#">Purchase Tickets</a>
--------	-----	------------	----------	------	---------	----------------------------------



MONTGOMERY PARKS

**FREE  
GUIDED  
TOURS**

April through October  
2nd and 4th Saturdays  
12 - 4 pm

# Oakley Cabin

## African American Museum & Park

Explore the rich history of Oakley Cabin's African American roadside community. Learn how these tenant farm families lived and worked on this historic site from emancipation well into the 20th century. Their culture and traditions heavily influenced those of surrounding communities, and their story is deeply woven into Montgomery County's history. At the center of this site is Oakley Cabin, now serves as a living history museum.

Visit [OakleyCabin.org](http://OakleyCabin.org) for current programming and event information.

### **BECOME A VOLUNTEER TOUR GUIDE!**

Share your love of history, the great outdoors, and agriculture with visitors of all ages. Volunteer opportunities meet SSL requirements. FREE training provided. Register online at [HistoryInTheParks.org](http://HistoryInTheParks.org).

## **OAKLEY CABIN AFRICAN AMERICAN MUSEUM & PARK**

3610 Brookeville Road | Olney, MD 20832

[HistoryInTheParks.org](http://HistoryInTheParks.org) | 301-650-4373





WOODLAWN MANOR  
CULTURAL PARK



**WOODLAWN MANOR CULTURAL PARK**

16501 Norwood Road | Sandy Spring, MD 20860  
[MCP-WoodlawnPrograms@montgomeryparks.org](mailto:MCP-WoodlawnPrograms@montgomeryparks.org)  
301-929-5989 | [WoodlawnManor.org](https://www.WoodlawnManor.org)

Park grounds and trails open daily sunrise to sunset.  
Free of charge.

**WOODLAWN MUSEUM**

Open April–November  
Friday and Saturday 10am–4pm  
Sunday 12–4pm  
Fee Required.

## SPECIAL EVENTS

### Juneteenth

Juneteenth is a federal holiday commemorating the end of enslavement in the United States. Join us for special museum hours Wednesday, June 19 from 10am to 4pm. Admission can be purchased the day of in the Visitor’s Center.

*Woodlawn Manor Cultural Park*

Jun 19	Wed	10a-4p	All Ages	<a href="#">PWMVC0007-200001</a>
--------	-----	--------	----------	----------------------------------

### Heritage Days

Sponsored by Heritage Montgomery, join us and celebrate the 25th annual Heritage Days Event! This event is county-wide and includes many different heritage sites. Enjoy free admission to the Woodlawn Museum on Saturday, June 29 and Sunday, June 30. Museum hours are 10 am to 4 pm. All ages welcome. All other tours and offerings are full price.

*Woodlawn Manor Cultural Park*

Jun 29-30	Sat & Sun	10a-4p	All Ages	<a href="#">PWMVC0007-200003</a>
-----------	-----------	--------	----------	----------------------------------

### Summer Family Day

Part of a quarterly Family Day series: Kids and families of all ages are welcome to drop-in to the Summer Family Day celebration. Enjoy some hands-on activities about life in the 1800s, free admission to the Woodlawn Museum, and play 19th Century games! All ages. Free Admission.

*Woodlawn Manor Cultural Park*

Aug 10	Sat	11a-3p	All Ages	<a href="#">PWMVC0007-200002</a>
--------	-----	--------	----------	----------------------------------







## Guided Hike on the Underground Railroad Experience Trail

Learn about the experience of 19th century freedom seekers and Montgomery County residents in a guided hike of the Underground Railroad Experience Trail. Discover techniques used for navigation, eluding detection, and finding food/shelter on the perilous journey. Hike covers 2 miles on a natural surface hiking trail; not ADA accessible or appropriate for all strollers. Dress appropriately. Content appropriate for ages 7 and up; fee charged for ages 6 and up. Registration highly encouraged; cut off 12 noon day before program. Limited walk-in availability; sold at the Woodlawn Visitor Center.

### *Woodlawn Manor Cultural Park*

Jun 1	Sat	10-11:30a	Ages 6 and up	\$8	<a href="#">Purchase Tickets</a>
Jun 8	Sat	10-11:30a	Ages 6 and up	\$8	<a href="#">Purchase Tickets</a>
Jun 15	Sat	10-11:30a	Ages 6 and up	\$8	<a href="#">Purchase Tickets</a>
Jun 22	Sat	10-11:30a	Ages 6 and up	\$8	<a href="#">Purchase Tickets</a>
Jun 29	Sat	10-11:30a	Ages 6 and up	\$8	<a href="#">Purchase Tickets</a>
Jul 6	Sat	10-11:30a	Ages 6 and up	\$8	<a href="#">Purchase Tickets</a>
Jul 13	Sat	10-11:30a	Ages 6 and up	\$8	<a href="#">Purchase Tickets</a>
Jul 20	Sat	10-11:30a	Ages 6 and up	\$8	<a href="#">Purchase Tickets</a>
Jul 27	Sat	10-11:30a	Ages 6 and up	\$8	<a href="#">Purchase Tickets</a>
Aug 3	Sat	10-11:30a	Ages 6 and up	\$8	<a href="#">Purchase Tickets</a>
Aug 17	Sat	10-11:30a	Ages 6 and up	\$8	<a href="#">Purchase Tickets</a>
Aug 24	Sat	10-11:30a	Ages 6 and up	\$8	<a href="#">Purchase Tickets</a>
Aug 31	Sat	10-11:30a	Ages 6 and up	\$8	<a href="#">Purchase Tickets</a>

WOODLAWN MANOR CULTURAL PARK

# WOODLAWN MUSEUM

Exhibits illustrate Montgomery County's agricultural history, enslaved and free black communities, the Quaker experience and the Underground Railroad.

Open April–November

Friday & Saturday: 10 am–4 pm;

Sunday: 12–4 pm

**Tickets can be purchased  
on-site**



## Woodlawn Manor House Tours

Take a guided tour of the 19th Century Woodlawn Manor House and learn about Palmer family that oversaw the farm for nearly 100 years. Learn about the grounds and the other buildings on the property and the role they played in this successful farm.

The guided tour includes interior and exterior spaces, including optional spaces that are not ADA accessible.

Tours are available Saturdays at 11am and 2pm and Sundays at 1pm.

Admission, \$5 per person. Purchase tickets day-of at the Visitor Center.

**WOODLAWN MANOR CULTURAL PARK**

16501 Norwood Road | Sandy Spring, MD 20860

MCP-WoodlawnPrograms@montgomeryparks.org

301-929-5989 | [WoodlawnManor.org](http://WoodlawnManor.org)



WOODLAWN MANOR  
CULTURAL PARK





Montgomery Parks 55+ programs are designed with the growing population of older adults in mind. Try something new in one of our beautiful park locations.

Visit [MoCoParks.org/55andbetter](https://MoCoParks.org/55andbetter) for a complete list of programs.

## PROGRAMS FOR ADULTS 55 AND UP

### Socials for 55+: Archery

This session will include archery instruction at South Germantown Archery Range. Whether you're a complete beginner or have some previous experience, our expert instructor will guide you through the fundamentals of archery, ensuring a safe and enjoyable learning experience for all. Learn proper techniques, improve your aim, and experience the thrill of hitting your target as you develop new skills alongside fellow participants. Registration is required.

*South Germantown Driving Range*

[Click to Register](#)

Jun 13	Thu	10-11:30a	Ages 55 and up	\$10	1 Class	<a href="#">PPACC0002-200002</a>
--------	-----	-----------	----------------	------	---------	----------------------------------

### Socials for 55+: Parks Game Night

Gather with friends and make new ones as you play a variety of board games, card games, and more. Whether you're a seasoned gamer or a casual player, everyone is welcome to join the fun. Enjoy snacks, friendly competition, and the opportunity to connect with fellow enthusiasts. Stay tuned for a list of featured games! Registration is required.

*Quince Orchard Valley Neighborhood Park*

[Click to Register](#)

Jun 27	Thu	6-8p	Ages 55 and up	\$2	1 Class	<a href="#">PPACC0002-200003</a>
--------	-----	------	----------------	-----	---------	----------------------------------

### Socials for 55+: Exploring Watercolor and Neopastels

In this beginner-friendly session, we'll explore the vibrant world of watercolor and Neopastels. Engage in guided drawing activities suitable for all skill levels, where everyone can create their interpretation of the same image. No prior art experience necessary. Art supplies are provided. Registration is required.

*North Four Corners Local Park*

[Click to Register](#)

Jul 12	Fri	3-4:30p	Ages 55 and up	\$25	1 Class	<a href="#">PPACC0002-200004</a>
--------	-----	---------	----------------	------	---------	----------------------------------

### Socials for 55+: Mosaic Plant Coasters

In this session, learn to create stunning coasters with colored glass and bamboo perfect for holding small potted plants. Materials provided. Registration required.

*East Norbeck Local Park*

[Click to Register](#)

Jul 26	Fri	11a-12:30p	Ages 55 and up	\$7	1 Class	<a href="#">PPACC0002-200005</a>
--------	-----	------------	----------------	-----	---------	----------------------------------

### Socials for 55+: Lavender Delights

Captivate your senses and learn the therapeutic benefits of dried lavender by creating lavender hand scrub, lavender oil, and lavender scent bags. Materials provided. Registration required.

*Meadowbrook Local Park*

[Click to Register](#)

Aug 2	Fri	11a-12:30p	Ages 55 and up	\$8	1 Class	<a href="#">PPACC0002-200006</a>
-------	-----	------------	----------------	-----	---------	----------------------------------

## Strong & Fit (55+)

Join us as we partner with Age Well Senior Fitness to promote physical fitness and wellness. Participants will utilize our beautiful open space, trails, and outdoor fitness equipment to improve their balance, muscular strength, and flexibility while enjoying the benefits of exercising in a natural environment. Instructors have specialized training to provide a safe and effective workout that meets the unique needs of active adults 55+. Soak up the Vitamin D and stay active and healthy. While modifications will be provided to meet the various levels of fitness, this program is designed for individuals who can walk independently without using assistive mobility devices. Participants should bring their own mat and water. 2-5 lb weights will be provided. Participants may bring their own hand weights if desired.

*Dewey Local Park*

[Click to Register](#)

Jul 9-Aug 13	Tue	10-11a	Ages 55 and up	Free	6 Classes	<a href="#">PPACC0008-200001</a>
--------------	-----	--------	----------------	------	-----------	----------------------------------

## Beginning Recreational Kayaking for Older Adults

Kayaking is even more fun than it looks, plus it has numerous health and physical benefits! Come learn how to paddle on flat water in recreational solo kayaks on Little Seneca Lake. Learn basic strokes, entries and exits, boat control, and more, taught by certified American Canoe Association instructors. You may get wet, so dress accordingly. All necessary equipment provided, and adaptive equipment will be available for those needing assistance getting in and out of the kayak. Please wear a hat, water sandals or shoes (no flip-flops, please) and bring water and sunscreen. Expect to get your feet wet and your clothes a bit damp. You must be able to swim. Meet in front of the gazebo by the pontoon boat dock and boat rental area. Registration required.

*Black Hill Discovery Center*

[Click to Register](#)

Jun 5	Wed	4-6p	Ages 55 and up	\$55	1 Class	<a href="#">PPACC0010-200001</a>
Jun 9	Sun	10:30a-12:30p	Ages 55 and up	\$55	1 Class	<a href="#">PPACC0010-200002</a>
Jun 12	Wed	4-6p	Ages 55 and up	\$55	1 Class	<a href="#">PPACC0010-200003</a>
Jul 7	Sun	8-10a	Ages 55 and up	\$55	1 Class	<a href="#">PPACC0010-200004</a>

## 55+ Lake Tour by Kayak

Want to watch wildlife or just enjoy a peaceful paddle? Then join us for a leisurely kayak tour of Little Seneca Lake. We could see beaver, herons, maybe even a bald eagle. We'll supply boats, paddles, and PFD's. Adaptive equipment will be available to assist participants in getting in and out of the kayak. Please wear a hat, water sandals or shoes (no flip-flops, please) and bring water and sunscreen. You can expect to get your feet wet and your clothes a bit damp. Basic paddling experience is necessary (this is not a lesson). Meet in front of the gazebo by the pontoon boat dock and boat rental area. Registration required.

*Black Hill Discovery Center*

[Click to Register](#)

Jun 16	Sun	10:30a-12:30p	Ages 55 and up	\$30	1 Class	<a href="#">PPACC0009-200002</a>
Jul 16	Tue	4-6p	Ages 55 and up	\$30	1 Class	<a href="#">PPACC0009-200001</a>
Aug 7	Wed	3:30-5:30p	Ages 55 and up	\$30	1 Class	<a href="#">PPACC0009-200003</a>
Aug 11	Sun	8-10a	Ages 55 and up	\$30	1 Class	<a href="#">PPACC0009-200004</a>

## Nature Book Club

Join our 55+ Nature Book Club and become part of a community that celebrates the beauty of literature and the outdoors! Explore a range of books centered around nature, wildlife, conservation, and environmental issues. Each month, our members vote on the next book to read, ensuring a diverse and engaging reading list. Light refreshments will be provided. Registration is required.

*Locations Vary*

Jun 18	Tues	6-7:30 p	Ages 55 and up	Free	1 Class	<a href="#">Click to Register</a>
Jul 16	Tues	6-7:30 p	Ages 55 and up	Free	1 Class	<a href="#">Click to Register</a>
Aug 20	Tues	6-7:30 p	Ages 55 and up	Free	1 Class	<a href="#">Click to Register</a>

## LEARN ABOUT ADDITIONAL PROGRAMS FOR ADULTS 55 AND UP

**A “Grand” Adventure: Grandparent and Child Pontoon Boat Tour at Black Hill Discovery Center** [Page 49](#)

**Never Grow Up Camp** at Black Hill Discovery Center [Page 47](#)





Fun and inclusive programs tailored for individuals with disabilities and their community, aiming to increase leisure skills, foster independence, and encourage social connections.

## ADAPTIVE PROGRAMS

### Adaptive Paddling Program

Enjoy an inclusive evening on the water with our Adaptive Paddling Program. This program is designed for individuals with disabilities and their family or friends, providing an accessible and accommodating experience. To join the program, please register the individual with a disability and indicate the number of guests accompanying them in the custom question during the registration process. Our program includes all the necessary gear to ensure your comfort and confidence on the river such as life jackets and paddles. Trained and friendly staff will accompany you on the water to ensure a safe and enjoyable program. The program takes place on calm, flat water, creating a relaxed and safe environment for participants.

#### *Black Hill Discovery Center*

[Click to Register](#)

Jun 26	Wed	4-7p	Ages 16 and up	Free	1 Class	<a href="#">PPACC0005-200001</a>
--------	-----	------	----------------	------	---------	----------------------------------

#### *Seneca Landing Boat Ramp*

[Click to Register](#)

Jul 20	Sat	4-7p	Ages 16 and up	Free	1 Class	<a href="#">PPACC0005-200002</a>
--------	-----	------	----------------	------	---------	----------------------------------

Aug 14	Wed	4-7p	Ages 16 and up	Free	1 Class	<a href="#">PPACC0005-200003</a>
--------	-----	------	----------------	------	---------	----------------------------------

#### *Black Hill Discovery Center*

[Click to Register](#)

Sep 18	Wed	4-7p	Ages 16 and up	Free	1 Class	<a href="#">PPACC0005-200004</a>
--------	-----	------	----------------	------	---------	----------------------------------

### Adaptive Mountain Biking

Experience the thrill of mountain biking in our new Adaptive Mountain Biking program designed inclusively for individuals with disabilities. We provide instruction, bikes, and equipment. When registering, please specify your preferred time slot in the custom questions section. Detailed bike information will be provided upon registration and on our website. We will assess your needs through an online form and consultation before the program. See you on the trails, geared up for adventure!

#### *Wheaton Regional Park*

[Click to Register](#)

Aug 4	Sun	10a-2:30p	Ages 16 and up	Free	1 Class	<a href="#">PPACC0012-200001</a>
-------	-----	-----------	----------------	------	---------	----------------------------------

### Trail Trekkers

Walk and connect with Trail Trekkers – an organized, inclusive walking club sponsored by Montgomery Parks! This free program, designed for individuals with disabilities and their friends, family, and community members, will take place at various accessible trails within Montgomery County, providing participants with the opportunity to immerse themselves in diverse natural surroundings and engage in conversations with fellow trekkers while creating long-lasting friendships.

[Click to Learn More](#)

First Thursday of the month	Thu	4p	Ages 16-26	Free		<a href="#">Link to membership</a>
-----------------------------	-----	----	------------	------	--	------------------------------------

2nd and 4th Thursday of the month	Thu	11a	Ages 16 and up	Free		<a href="#">Link to membership</a>
-----------------------------------	-----	-----	----------------	------	--	------------------------------------





## PARK ACADEMY SERIES - FITNESS

### Sunset Yoga

Unwind from your day by breathing fresh air, enjoying nature around you while flowing through a meditative outdoor yoga practice. This class will offer variations to help fit all flexibility and fitness levels. Participants should be able to get up and down from a mat. In case of inclement weather, class will be held in the Park Activity Building located on park grounds. Registration is required. No walk-ins will be accepted.

*Quince Orchard Valley Neighborhood Park*

[Click to Register](#)

Jun 4-Jul 30	Tue	7-8p	Ages 14 and up	\$80	8 Classes	<a href="#">PPACT0005-200001</a>
--------------	-----	------	----------------	------	-----------	----------------------------------

### Toddler and You Yoga

Dance, sing and frolic with your toddler while learning yoga poses, participating in creative movement and learning breathing exercises and other methods small children can use for self calming.

*Kensington Cabin Local Park - Park Activity Building*

[Click to Register](#)

Jun 6-Aug 1	Thu	10:30-11:15a	Ages 2 to 5 plus one adult	\$96	8 Classes	<a href="#">PPACT0006-200001</a>
-------------	-----	--------------	----------------------------	------	-----------	----------------------------------

## Breath and Movement Flow Yoga

In this active outdoor Viniyoga-Inspired Flow class, we focus on the movement of our breath to initiate movement of our body into postures, which are oriented around Sun Salutations. In each class we will move progressively from simple and easy postures to more complex and difficult ones. This practice will promote strength, stability, flexibility, skeletal alignment, and mid-body connection through the breath. In case of inclement weather, class will be held in the Park Activity Building located on park grounds. Registration is required. No walk-ins will be accepted.

### *Clarksburg Neighborhood Park*

[Click to Register](#)

Jun 1-29	Sat	10-11a	Ages 16 and up	\$50	5 Classes	<a href="#">PPACT0007-200001</a>
----------	-----	--------	----------------	------	-----------	----------------------------------

### *Quince Orchard Valley Neighborhood Park*

[Click to Register](#)

Jul 20-Aug 17	Sat	10-11a	Ages 16 and up	\$50	5 Classes	<a href="#">PPACT0007-200002</a>
---------------	-----	--------	----------------	------	-----------	----------------------------------

## Dance Fitness

Get moving and the fitness will follow! Alternate between high and low intensity cardio-dance moves designed to maximize your calorie-burning potential, release joy, tone muscle, improve heart health and overall mood. It’s your feel-good movement therapy to upbeat music that can adapt to your fitness level and where you always fit in. Registration is required. No walk-ins will be accepted.

### *Clarksburg Neighborhood Park - Park Activity Building*

[Click to Register](#)

Jul 11-Aug 29	Thu	6-7p	Ages 16 and up	\$64	8 Classes	<a href="#">PPACT0008-200001</a>
---------------	-----	------	----------------	------	-----------	----------------------------------

## Nordic Walking

Join Certified Instructor Anna for Nordic Walking classes! This fun and easy-to-learn outdoor exercise is also known as Urban Poling or pole walking. Nordic Walking levels up and intensifies regular walking by helping participants burn up to 46% more calories than walking without poles. Additionally, it helps improve posture and balance and engages the core and upper body. Nordic Walking is for individuals who can walk without assistance and poles are provided. Registration is required. No walk-ins will be accepted.

### *Ovid Hazen Wells Recreational Park*

[Click to Register](#)

Jun 4-25	Tue	6-7p	Ages 18 and up	\$40	4 Classes	<a href="#">PPACT0010-200001</a>
----------	-----	------	----------------	------	-----------	----------------------------------





*Brookside*  
GARDENS

**BROOKSIDE GARDENS**

1800 Glenallan Avenue | Wheaton, MD 20902

301-962-1400

[BrooksideGardens.org](https://BrooksideGardens.org)



## SPECIAL EVENTS

### Summer Twilight Concert Series

Join us each Tuesday evening in June for a series of musical performances set in the beauty of the Gardens! Admission is free, and no registration is required. Bring your friends and family, and don't forget your chairs, blankets, and picnics (allowed in the Gardens on concert evenings only). Food trucks will also be available for your dining pleasure. No registration required. Sponsored by Friends of Brookside Gardens

*Brookside Gardens*

#### Ocho de Bastos, Latin Pop

Jun 4	Tue	6:30-8p	All Ages	Free	<a href="#">PBG0102-200001</a>
-------	-----	---------	----------	------	--------------------------------

#### 19th Street Band, Americana/Country/Rock

Jun 11	Tues	6:30-8p	All Ages	Free	<a href="#">PBG0102-200002</a>
--------	------	---------	----------	------	--------------------------------

#### Kurlou Reggae All-Stars, Reggae

Jun 18	Tues	6:30-8p	All Ages	Free	<a href="#">PBG0102-200003</a>
--------	------	---------	----------	------	--------------------------------

#### King Teddy, Swing/Rockabilly

Jun 25	Tues	6:30-8p	All Ages		<a href="#">PBG0102-200004</a>
--------	------	---------	----------	--	--------------------------------

### Shakespeare In the Garden

Delight in an outdoor production of A Midsummer Night's Dream where rom-com antics meet supernatural magic. Follow four couples through the human and fairy realms where true love is tested by Puck's mischievous ploys. Bring a picnic or enjoy a meal from an on-site food truck. \*Rain date: Thursday July 11

*Brookside Gardens*

Jul 9*	Tues	7-8:45p	All Ages	Free	<a href="#">PBG0101-200001</a>
--------	------	---------	----------	------	--------------------------------

## EARLY CHILDHOOD AND PRESCHOOL

### Yoga Sprouts!

Bring your little ones to this series of fun, garden-related yoga movement classes. Physical exercise and mindfulness will awaken your senses, boost your energy, and give you good garden vibes to start your day. Classes are outdoors and either moved indoors or canceled in cases of inclement weather. Bring your own mat or borrow one of ours. Adults must accompany children. Meet at South Terrace.

*Brookside Gardens*

[Click to Register](#)

Jun 1	Sat	10-10:45a	Ages 3 to 9	\$7	1 Class	<a href="#">PBG0078-200003</a>
Jun 8	Sat	10-10:45a	Ages 3 to 9	\$7	1 Class	<a href="#">PBG0078-200004</a>

## ENVIRONMENTAL EDUCATION

### Storytime in the Garden

Join us for an interactive story time followed by an outdoor exploration or activity for children ages 3-7. We will meet in the outdoor classroom area located in the Children’s Garden, weather permitting. Adults must accompany children. Meet in the Outdoor Classroom located in the Children’s Garden area.

*Brookside Gardens*

[Click to Register](#)

Jun 9	Sun	10-10:45a	Ages 3 to 7	\$5	1 Class	<a href="#">PBG0111-200001</a>
-------	-----	-----------	-------------	-----	---------	--------------------------------

### Butterflies of Brookside (Year Round)

As the summer winds down, monarchs, swallowtails, and other butterflies are busy in the gardens. Stop at the “hot spot” along the trail to identify different butterfly species, snap a few photos, and record observations in the nature journal provided. Meet in the Visitor Center at the start of class and dress for the weather.

*Brookside Gardens*

[Click to Register](#)

Aug 24	Sat	10-11a	Ages 6 to 8	\$7	1 Class	<a href="#">PBG0127-200001</a>
Aug 25	Sun	10-11a	Ages 8 to 12	\$7	1 Class	<a href="#">PBG0127-200002</a>



## HEALTH AND WELLNESS

### Tai Chi at Brookside Gardens

\*NOTE: This class will be held in the Japanese Tea House, located in the Gude Garden. No walk-ins will be accepted.

*Instructor: Charles Votaw*

Tai Chi is an ancient, Chinese form of exercise perfect for adults seeking stress reduction while strengthening muscles, improving balance, and increasing flexibility. The Forms are repetitive patterns that emphasize slow, flowing motions and controlled movements. Classes will help beginners to learn the Forms while providing regular practitioners the guidance of an experienced instructor. FOBG \$12

*Brookside Gardens*

[Click to Register](#)

Jun 5	Wed	9-10:15a	Ages 18 and up	\$14	1 Class	<a href="#">PBG0029-200001</a>
Jun 12	Wed	9-10:15a	Ages 18 and up	\$14	1 Class	<a href="#">PBG0029-200002</a>
Jun 19	Wed	9-10:15a	Ages 18 and up	\$14	1 Class	<a href="#">PBG0029-200003</a>
Jun 26	Wed	9-10:15a	Ages 18 and up	\$14	1 Class	<a href="#">PBG0029-200004</a>
Jul 10	Wed	9-10:15a	Ages 18 and up	\$14	1 Class	<a href="#">PBG0029-200006</a>
Jul 17	Wed	9-10:15a	Ages 18 and up	\$14	1 Class	<a href="#">PBG0029-200007</a>
Jul 24	Wed	9-10:15a	Ages 18 and up	\$14	1 Class	<a href="#">PBG0029-200008</a>
Jul 31	Wed	9-10:15a	Ages 18 and up	\$14	1 Class	<a href="#">PBG0029-200009</a>
Aug 7	Wed	9-10:15a	Ages 18 and up	\$14	1 Class	<a href="#">PBG0029-200010</a>
Aug 14	Wed	9-10:15a	Ages 18 and up	\$14	1 Class	<a href="#">PBG0029-200011</a>





## Gentle Yoga at Brookside Gardens

\*NOTE: This class will be held in the Japanese Tea House, located in the Gude Garden. No walk-ins will be accepted.

**Instructor: Sherry Weber**

These series of classes feature foundational yoga poses that are designed to support better breathing, walking, and space orientation. Yoga movements help build muscle, bone density and core strength while improving balance, posture, and flexibility. Mats are not included. FOBG \$12

### Brookside Gardens

[Click to Register](#)

Jun 6	Thu	10-11a	Ages 18 and up	\$14	1 Class	<a href="#">PBG0030-200001</a>
Jun 13	Thu	10-11a	Ages 18 and up	\$14	1 Class	<a href="#">PBG0030-200002</a>
Jun 20	Thu	10-11a	Ages 18 and up	\$14	1 Class	<a href="#">PBG0030-200003</a>
Jun 27	Thu	10-11a	Ages 18 and up	\$14	1 Class	<a href="#">PBG0030-200004</a>
Jul 11	Thu	10-11a	Ages 18 and up	\$14	1 Class	<a href="#">PBG0030-200005</a>
Jul 18	Thu	10-11a	Ages 18 and up	\$14	1 Class	<a href="#">PBG0030-200006</a>
Jul 25	Thu	10-11a	Ages 18 and up	\$14	1 Class	<a href="#">PBG0030-200007</a>
Aug 1	Thu	10-11a	Ages 18 and up	\$14	1 Class	<a href="#">PBG0030-200008</a>
Aug 8	Thu	10-11a	Ages 18 and up	\$14	1 Class	<a href="#">PBG0030-200009</a>
Aug 15	Thu	10-11a	Ages 18 and up	\$14	1 Class	<a href="#">PBG0030-200010</a>
Aug 22	Thu	10-11a	Ages 18 and up	\$14	1 Class	<a href="#">PBG0030-200011</a>

## Yoga at Brookside Gardens

\*NOTE: This class will be held in the Japanese Tea House, located in the Gude Garden. No walk-ins will be accepted.

**Instructor: Tanory Ateek**

Enjoy yoga held in a peaceful setting under the cover of the Japanese Tea House. Designed to increase flexibility and physical strength and to cultivate mental focus, these classes are a beautiful and relaxing way to begin your weekend. Mats are not included. FOBG \$12

### Brookside Gardens

[Click to Register](#)

Jun 1	Sat	9:30-10:30a	Ages 18 and up	\$14	1 Class	<a href="#">PBG0031-200001</a>
Jun 8	Sat	9:30-10:30a	Ages 18 and up	\$14	1 Class	<a href="#">PBG0031-200002</a>
Jun 15	Sat	9:30-10:30a	Ages 18 and up	\$14	1 Class	<a href="#">PBG0031-200003</a>
Jun 22	Sat	9:30-10:30a	Ages 18 and up	\$14	1 Class	<a href="#">PBG0031-200004</a>
Jun 29	Sat	9:30-10:30a	Ages 18 and up	\$14	1 Class	<a href="#">PBG0031-200005</a>
Jul 6	Sat	9:30-10:30a	Ages 18 and up	\$14	1 Class	<a href="#">PBG0031-200006</a>
Jul 13	Sat	9:30-10:30a	Ages 18 and up	\$14	1 Class	<a href="#">PBG0031-200007</a>
Jul 20	Sat	9:30-10:30a	Ages 18 and up	\$14	1 Class	<a href="#">PBG0031-200008</a>
Jul 27	Sat	9:30-10:30a	Ages 18 and up	\$14	1 Class	<a href="#">PBG0031-200009</a>
Aug 3	Sat	9:30-10:30a	Ages 18 and up	\$14	1 Class	<a href="#">PBG0031-200010</a>
Aug 10	Sat	9:30-10:30a	Ages 18 and up	\$14	1 Class	<a href="#">PBG0031-200011</a>
Aug 17	Sat	9:30-10:30a	Ages 18 and up	\$14	1 Class	<a href="#">PBG0031-200012</a>

## Shinrin-yoku: The Art of Forest Bathing

**Instructor: Ana Ka’ahanui, certified Forest Therapy Guide**

Connect with nature through a forest bathing walk among the vivid colors and rich fragrances of summer blooms. Stroll the grounds and neighboring forest at a measured pace that allows you to notice the small miracles of nature unfolding. We’ll close the walk by enjoying hot tea and healthy snacks.

About Forest Bathing: The Forest Agency of Japan began promoting forest bathing, or shinrin-yoku, in the 1980s as a response to the stresses of urban living and long work hours. This nature-oriented mindfulness practice, which is rooted in the traditional Japanese reverence for the natural world, has since become popular all over the world, bringing joy and improved mental and physical health to millions of people. Numerous health studies have confirmed forest bathing’s benefits and doctors and nurses in our region are taking note. Many are prescribing “Nature” to their patients. FOBG \$30

### Brookside Gardens

[Click to Register](#)

Jun 23	Sun	10a-12p	Ages 18 and up	\$35	1 Class	<a href="#">PBG0022-200001</a>
--------	-----	---------	----------------	------	---------	--------------------------------



## Guided Mindfulness Walk - Self-Care in Nature

Join integrative therapist Tania Lanning for a guided walk focused on self-care in nature. Among the fragrant blossoms, maple trees, and brightly colored roses of the Formal Gardens, you will be invited to awaken your senses, notice your inner voice, and reflect on how you can bring awareness and compassion to your internal experience. Group will meet on the South Terrace in front of the Visitor Center. Participants will receive a small blank notebook for journaling. Please note that Brookside Gardens is not a mental health service provider. FOBG \$25

*Brookside Gardens*

[Click to Register](#)

Jun 4	Tue	10a-12p	Ages 18 and up	\$28	1 Class	<a href="#">PBG0109-200001</a>
-------	-----	---------	----------------	------	---------	--------------------------------

## Healing Connections Through Nature & The Arts

*Instructor: Marilyn B. Spenadel, LCPC, ACS*

This self-care workshop will blend meditative practices in nature with art therapy and group discussion to build holistic wellness. Explore mindfulness skills to create your heart-felt resiliency routine for handling stress and providing peace of mind and body. Learn nurturing techniques that help build internal resources for spiritual and emotional health. FOBG \$54

*Brookside Gardens*

[Click to Register](#)

Jul 20	Sat	10a-1p	Ages 18 and up	\$60	1 Class	<a href="#">PBG0144-200001</a>
--------	-----	--------	----------------	------	---------	--------------------------------

## GARDEN TOURS

### Pollinator Meadow Tour

*Tour Guide: Brookside Nature Center & Brookside Gardens staff*

Celebrate National Pollinator Week as we wander through an open meadow of beautiful perennials swarming with pollinators. Learn about mid-Atlantic native plants you can plant to help support beneficial insects while adding beauty. Meet at the bottom of the stairs leading up to the Brookside Nature Center (1400 Glenallan Avenue, Wheaton, MD 20902) FOBG \$10

*Brookside Gardens*

[Click to Register](#)

Jun 18	Tue	2-3:15p	Ages 18 and up	\$12	1 Class	<a href="#">PBG0043-200001</a>
Jun 20	Thu	10-11:15a	Ages 18 and up	\$12	1 Class	<a href="#">PBG0043-200002</a>

## Guided Walk with the Capital Naturalist/Caminata guiada con el Capital Naturalist

\* Tour given in English and Spanish. | Visita guiada en inglés y español.

**Tour guide: *Alonso Abugattas, Natural Resources Manager, Arlington County and Founder, Capital Naturalist***

Discover the hidden flora and fauna of Brookside Gardens and the neighboring forest with award winning naturalist, storyteller, and environmental educator Alonso Abugattas. Learn more about the fascinating relationships between plants and wildlife as you discover the local ecosystems that can exist in your own backyard. This guided tour will help you see the natural world of Brookside Gardens in a whole new light!

**Guía: *Alonso Abugattas, gerente de Recursos Naturales, Condado de Arlington y fundador, Capital Naturalist***

Descubra la flora y fauna ocultas de Brookside Gardens y el bosque vecino con el galardonado naturalista, narrador y educador ambiental Alonso Abugattas. Obtenga más información sobre las fascinantes relaciones entre las plantas y la vida silvestre mientras descubre los ecosistemas locales que pueden existir en su propio patio trasero. ¡Esta visita guiada le ayudará a ver el mundo natural de Brookside Gardens desde otra perspectiva! guiada le ayudará a ver el mundo natural de Brookside Gardens desde otra perspectiva! FOBG \$12

*Brookside Gardens*

[Click to Register](#)

Jul 20	Sat	9:30-11:30a	Ages 18 and up	\$15	1 Class	<a href="#">PBG0138-200001</a>
--------	-----	-------------	----------------	------	---------	--------------------------------

## LOCAL FIELD TRIPS

### Living Field Lab: RainScape Gardens for Sun, Pollinators, & Deer Resistance

This new series aims to fill the gap between theory and practice. Tours of home gardens will serve as real-world case studies of landscape projects. Onsite discussions with homeowners and Brookside Gardens staff will offer applicable lessons in design and maintenance. Plant lists provided for each Field Lab.

Discover how this landscape design qualified for the Montgomery County Department of Environmental Protection’s RainScapes rebate by addressing water runoff issues. Examine native plants for sun that support pollinators and hummingbirds. Advice on deer resistant selections and strategies for soil amendments will be covered. FOBG \$22

*Olney, Md (address sent after registration)*

[Click to Register](#)

Jun 8	Sat	10a-12p	Ages 18 and up	\$25	1 Class	<a href="#">PBG0142-200001</a>
-------	-----	---------	----------------	------	---------	--------------------------------

## Rachel Carson Conservation Park Walking Tour

*Tour Guide: Ryan Colliton, vegetation ecology & management unit leader, Montgomery Parks*

Rachel Carson was a pioneering environmentalist who called Montgomery County home. Explore her namesake park to learn how Montgomery Parks’ restoration projects protect these natural habitats. Journey through colorful meadows housing rare plants and discover a prime example of a chestnut oak forest. Prepare for this active hike with sturdy shoes and a water bottle! NOTE: Address & parking logistics will be sent after registration. FOBG \$27

*Brookside Gardens*

[Click to Register](#)

Jul 16	Tue	9:30-11:30a	Ages 18 and up	\$30	1 Class	<a href="#">PBG0086-200001</a>
--------	-----	-------------	----------------	------	---------	--------------------------------

## SPEAKER SERIES WORKSHOPS OR DISCUSSIONS

### The Lifelong Gardener: Garden with Ease and Joy at Any Age

*Speaker: Toni Gattone, author and adaptive gardening expert*

Gardeners of all ages and abilities will benefit from learning new strategies to garden with comfort, safety, and ease. This lecture will review dozens of tips, tools, and techniques for adaptive gardening. Toni will help you modify the accessibility of your garden and re-think your space to include containers, raised beds and vertical gardens. Discover new ergonomic tools that are easier on your hands, back, hips, and entire body.

*Brookside Gardens Virtual*

[Click to Register](#)

Jun 15	Sat	10:30a-12p	Ages 18 and up	Free	1 Class	<a href="#">PBG0136-200001</a>
--------	-----	------------	----------------	------	---------	--------------------------------

## HORTICULTURE PROGRAMS

### West African Food Crops: History, Cultivation and Culinary Uses

*Instructor: Thomas Crawley and Angelus Bullock, Brookside Gardens staff*

Expand your gardening and cooking palette with unique vegetables from West Africa. We’ll explore traditional agricultural practices and the cultural history of each crop. Learn where to source the seeds and plants locally, as well as cultivation techniques and even a few recipes to liven up your cuisine. Class includes a garden tour where you can see plant specimens up close. NOTE: This is an in-person program, meeting in the Adult Classroom, with an optional garden tour after. FOBG \$22

*Brookside Gardens*

[Click to Register](#)

Jul 13	Sat	10:30a-12p	Ages 18 and up	\$25	1 Class	<a href="#">PBG0139-200001</a>
--------	-----	------------	----------------	------	---------	--------------------------------



## ADVANCED BOTANICAL ILLUSTRATION

### Plants & Pollinators - Exploring New Watercolor & Colored Pencil Techniques

*Instructor: Mindy Lighthipe, botanical artist and instructor*

Prerequisite: Intermediate courses in botanical art & illustration

Level: Intermediate to advanced

Students will have the opportunity to select a pollinator and their host plant to develop with colored pencils and watercolors throughout this three-week course. Mindy will review composition guidelines that are specific to combining plants and insects. You’ll learn unique methods to create the delicate texture and transparency of insect wings. Discover innovative techniques to create metallic sheen and shimmer seen from any angle and direction without the use of iridescent paints. You’ll have the opportunity to experiment with different layering techniques on leaves and plant materials.

NOTE: This course will be taught online using Zoom. Students will need access to a computer that has a built-in camera or a smart phone. The instructor will use live demonstrations during this online workshop to demonstrate techniques and review concepts. During each three-hour session students will have the opportunity to ask questions and submit their artwork via email or share it live during the class for review by the instructor. A recording will be emailed to students after each session and made available for up to 90 days after. FOBG \$176

*Brookside Gardens Virtual*

[Click to Register](#)

Jun 8-22	Sat	10a-1p	Ages 18 and up	\$195	3 Classes	<a href="#">PBG0149-200001</a>
----------	-----	--------	----------------	-------	-----------	--------------------------------

## HANDS-ON WORKSHOPS

### Botanical Crafts with Hammer-Dyed Flowers

*Instructor: Amy Davidson, cut flower farmer*

Enjoy learning about natural dye techniques as you create a botanical landscape on fabric using fresh flowers and greenery grown on a local farm. Students can choose either an apron, tea towel, or canvas tote bag to craft. All supplies provided and students can supplement them with flowers from home. FOBG \$59

*Brookside Gardens*

[Click to Register](#)

Jun 22	Sat	10a-12p	Ages 18 and up	\$65	1 Class	<a href="#">PBG0137-200001</a>
--------	-----	---------	----------------	------	---------	--------------------------------

SPONSORED BY FRIENDS OF BROOKSIDE GARDENS

# SUMMER TWILIGHT CONCERT SERIES

# FREE!

Dance the night away with this series of musical performances set in the beauty of the Gardens!

- \* **Ocho de Bastos** | Latin Pop  
Tuesday, June 4 | 6:30 – 8:00 pm
- \* **19th Street Band** | Americana/Country/Rock  
Tuesday, June 11 | 6:30 – 8:00 pm
- \* **Kurlou Reggae All-Stars** | Reggae  
Tuesday, June 18 | 6:30 – 8:00 pm
- \* **King Teddy** | Big Band / Swing/Rockabilly  
Tuesday, June 25 | 6:30 – 8:00 pm



Bring your friends and family, and don't forget your chairs, blankets, and picnics (allowed in the Gardens on concert evenings only). Food trucks will also be available for your dining pleasure. Admission is free, and no registration is required.



For more information,  
scan the QR code or go to  
[MoCoParks.org/  
TwilightConcerts](https://www.MoCoParks.org/TwilightConcerts)

## BROOKSIDE GARDENS

1800 Glenallan Avenue | Wheaton, MD 20902  
301-962-1400 | [BrooksideGardens.org](https://www.BrooksideGardens.org)



*Friends of Brookside*  
BROOKSIDE GARDENS

*Brookside*  
GARDENS





**BLACK HILL**  
DISCOVERY CENTER



**BLACK HILL NATURE PROGRAMS**

20926 Lake Ridge Drive | Boyds, MD 20841

301-528-3493

[BlackHillDiscovery.org](https://BlackHillDiscovery.org)

## SPECIAL EVENTS

### Harpists at the Discovery Center

Join us for an afternoon of beautiful harp music and the natural beauty of Black Hill all around you. No need to register; just come to the Discovery Center and enjoy.

*Black Hill Discovery Center*

[Click to Register](#)

Jun 23	Sun	12-1p	All Ages	Free	1 Class	<a href="#">PBHDC0082-200001</a>
Jul 21	Sun	12-1p	All Ages	Free	1 Class	<a href="#">PBHDC0082-200002</a>
Aug 4	Sun	12-1p	All Ages	Free	1 Class	<a href="#">PBHDC0082-200003</a>

### Never Grow Up Camp

When is the last time you climbed a tree, went fishing or kayaking, made a journal, waded in a stream, or enjoyed a pontoon boat ride? Too long? Then join us and other grown-up “kids” to relive some of those summertime memories and create some new ones. It’s your chance to explore and play outside just like when you were a kid. A welcome letter with details will be sent before the start of camp. FOBH \$170

*Black Hill Discovery Center*

[Click to Register](#)

Aug 20-22	Tue-Thu	9a-3p	Ages 55 and up	\$175	3 Classes	<a href="#">PBHDC0088-200001</a>
-----------	---------	-------	----------------	-------	-----------	----------------------------------

## BOATING

### Lake Tour by Kayak

Want to watch wildlife or just enjoy a peaceful paddle? Then join us for a leisurely kayak tour of Little Seneca Lake. We could see beaver, herons, maybe even a bald eagle. We’ll supply boats, paddles, and PFD’s, but you can bring your own PFD (Type III or V) if you have one. And don’t forget to bring water, sunscreen, and extra shoes to change into after. You can expect to get your feet wet and your clothes a bit damp. Basic paddling experience is necessary (this is not a lesson). Meet in front of the gazebo by the pontoon boat dock and boat rental area. Registration required. FOBH \$29

*Black Hill Discovery Center*

[Click to Register](#)

Jun 16	Sun	8-10a	Ages 12 and up	\$30	1 Class	<a href="#">PBHDC0008-200001</a>
Jun 21	Fri	9-11a	Ages 12 and up	\$30	1 Class	<a href="#">PBHDC0008-200002</a>
Jul 9	Tue	4-6p	Ages 12 and up	\$30	1 Class	<a href="#">PBHDC0008-200003</a>
Jul 29	Mon	9-11a	Ages 12 and up	\$30	1 Class	<a href="#">PBHDC0008-200004</a>
Jul 30	Tue	4-6p	Ages 12 and up	\$30	1 Class	<a href="#">PBHDC0008-200005</a>
Aug 7	Wed	6-8p	Ages 12 and up	\$30	1 Class	<a href="#">PBHDC0008-200006</a>
Aug 11	Sun	10:30a-12:30p	Ages 12 and up	\$30	1 Class	<a href="#">PBHDC0008-200007</a>
Aug 28	Wed	5:30-7:30p	Ages 12 and up	\$30	1 Class	<a href="#">PBHDC0008-200008</a>

## Beginning Recreational Kayaking

Kayaking is even more fun than it looks! Come learn how to paddle on flat water in recreational solo kayaks on Little Seneca Lake. Learn basic strokes, entries and exits, boat control, and more, taught by certified American Canoe Association instructors. We won't roll, but you'll get wet, so dress accordingly. All necessary equipment provided but if you have your own PFD (Type III or V), you can bring it along. Please wear a hat, water sandals or shoes (no flip-flops, please) and bring water and sunscreen. You must be able to swim. Meet in front of the gazebo by the pontoon boat dock and boat rental area. Registration required.

*Black Hill Discovery Center*

[Click to Register](#)

Jun 5	Wed	6:30-8:30p	Ages 12 and up	\$55	1 Class	<a href="#">PBHDC0030-200001</a>
Jun 9	Sun	8-10a	Ages 12 and up	\$55	1 Class	<a href="#">PBHDC0030-200002</a>
Jun 12	Wed	6:30-8:30p	Ages 12 and up	\$55	1 Class	<a href="#">PBHDC0030-200003</a>
Jul 7	Sun	10:30a-12:30p	Ages 12 and up	\$55	1 Class	<a href="#">PBHDC0030-200004</a>

## Bats & Beavers Pontoon Boat Cruise

Join us for a sunset cruise aboard the pontoon boat. We'll search for beaver lodges and feeding sites, and hopefully see some beavers! As the sun sets, we'll use our bat detector to help us find feeding bats. Please register and pay for all participants. You may want to bring a jacket or sweater as it is often cooler on the boat. Meet at the pontoon boat dock, by the boat rentals. Registration required. FOBH \$7

*Black Hill Discovery Center*

[Click to Register](#)

Jun 3	Mon	7-8:30p	Ages 6 and up	\$8	1 Class	<a href="#">PBHDC0027-200001</a>
Jul 22	Mon	7-8:30p	Ages 6 and up	\$8	1 Class	<a href="#">PBHDC0027-200002</a>
Aug 1	Thu	7-8:30p	Ages 6 and up	\$8	1 Class	<a href="#">PBHDC0027-200003</a>
Aug 15	Thu	6:30-8p	Ages 6 and up	\$8	1 Class	<a href="#">PBHDC0027-200004</a>
Aug 27	Tue	6:30-8p	Ages 6 and up	\$8	1 Class	<a href="#">PBHDC0027-200005</a>

## Early Morning Pontoon Cruise

Wildlife are busy in the early morning hours and the lighting is great for photos. Join us for an early morning pontoon tour for some birding and photography, or just a lovely morning cruise on Little Seneca Lake. Meet at the pontoon boat dock, by the boat rentals. Registration required. FOBH \$13

*Black Hill Discovery Center*

[Click to Register](#)

Jul 25	Thu	7:30-9:30a	Ages 18 and up	\$14	1 Class	<a href="#">PBHDC0085-200001</a>
Aug 29	Thu	7:30-9:30a	Ages 18 and up	\$14	1 Class	<a href="#">PBHDC0085-200002</a>



## History of Boyds Pontoon Boat Tour

Join us and the Historical Society of Boyds to take a pontoon trip back in history. We'll cruise the lake, visiting spots to learn the history of the area from local experts. We'll also take some time to see what creatures are stirring around the lake. It could be chilly on the water so dress accordingly. Please register and pay for all participants. Meet at the pontoon boat dock, by the boat rentals. FOBH \$7

*Black Hill Discovery Center*

[Click to Register](#)

Aug 8	Thu	6:30-8p	Ages 14 and up	\$8	1 Class	<a href="#">PBHDC0049-200001</a>
-------	-----	---------	----------------	-----	---------	----------------------------------

## A "Grand" Adventure: Grandparent and Child Pontoon Boat Tour

Join us aboard the pontoon boat for an adventure for grandparents and their grandkids. We'll cruise the lake looking for the creatures that are stirring around the lake and include some stories as we boat along. It could be chilly on the water so dress accordingly. Please register and pay for all participants. Meet at the pontoon boat dock, by the boat rentals. FOBH \$7

*Black Hill Discovery Center*

[Click to Register](#)

Aug 23	Fri	10-11a	Ages 3 and up	\$8	1 Class	<a href="#">PBHDC0086-200001</a>
--------	-----	--------	---------------	-----	---------	----------------------------------

## FISHING

### Family Fishing Fun!

Fishing is fun for the whole family and for all abilities! We'll show you how to set up a simple bobber rig, bait your hook, and give you some tips on casting. We'll provide the bait and rigging supplies; you just need to catch the fish! We have fishing poles you can borrow, but if you have your own bring it along. Anglers of all abilities are welcome. All registrants 16 and over must have a current MD fishing license. Meet at the pontoon boat dock by the boat rentals. Registration required. Please register only those planning to fish. FOBH \$13

*Black Hill Discovery Center*

[Click to Register](#)

Jun 4	Tue	6:30-8:30p	Ages 3 and up	\$14	1 Class	<a href="#">PBHDC0003-200001</a>
Jul 30	Tue	9-11a	Ages 3 and up	\$14	1 Class	<a href="#">PBHDC0003-200002</a>
Aug 19	Mon	6-8p	Ages 3 and up	\$14	1 Class	<a href="#">PBHDC0003-200003</a>
Aug 25	Sun	9-11a	Ages 3 and up	\$14	1 Class	<a href="#">PBHDC0003-200004</a>

### Fishing with the Li'l Ones

Let's go fishin'! We'll provide poles and bait, then see what we can catch off the dock at Little Seneca Lake. Meet at the pontoon boat dock by the boat rentals. Registration required. FOBH \$7

*Black Hill Discovery Center*

[Click to Register](#)

Jun 7	Fri	9-10:30a	Ages 3 to 6	\$8	1 Class	<a href="#">PBHDC0004-200001</a>
Jul 2	Tue	9-10:30a	Ages 3 to 6	\$8	1 Class	<a href="#">PBHDC0004-200002</a>
Aug 9	Fri	9-10:30a	Ages 3 to 6	\$8	1 Class	<a href="#">PBHDC0004-200003</a>

## HIKES, SCAVENGER HUNTS & CAMPFIRES

### Babes in a Backpack

Let's go outside and hike to improve fitness, play in nature, and experience the great outdoors as a family. You will meet a naturalist at the meet up spot and set out on a trail that will have nature play and fun learning prompts along the way. These hikes are designed for adults with young children. Most trails are not stroller accessible, so you'll need a backpack or carrier for younger kids and non-walkers. Please register everyone attending no later than 24 hours before the hike so we can email you with the hike's location and other important information.

*Black Hill Discovery Center*

[Click to Register](#)

Jun 3	Mon	10a-12p	All Ages	\$2/adult	1 Class	<a href="#">PBHDC0051-200001</a>
Jul 26	Fri	10a-12p	All Ages	\$2/adult	1 Class	<a href="#">PBHDC0051-200002</a>
Aug 30	Fri	10a-12p	All Ages	\$2/adult	1 Class	<a href="#">PBHDC0051-200003</a>

### Campfires at Black Hill

There is nothing like being at a campfire under the stars. Join a naturalist for themed songs, stories, games, and of course, s'mores around a fire. Bring a blanket if it's chilly. Meet at the campfire area by Shelter F on Parking Lot 3, in Black Hill Regional Park. Registration required for all attending. FOBH \$6

*Black Hill Discovery Center*

[Click to Register](#)

Jun 29	Sat	7:30-8:30p	Ages 1 and up	\$7	1 Class	<a href="#">PBHDC0002-200001</a>
Jul 13	Sat	7:30-8:30p	Ages 1 and up	\$7	1 Class	<a href="#">PBHDC0002-200002</a>
Jul 27	Sat	7:30-8:30p	Ages 1 and up	\$7	1 Class	<a href="#">PBHDC0002-200003</a>
Aug 10	Sat	7-8p	Ages 1 and up	\$7	1 Class	<a href="#">PBHDC0002-200004</a>
Aug 24	Sat	7-8p	Ages 1 and up	\$7	1 Class	<a href="#">PBHDC0002-200005</a>

### Firefly Search & Night Hike

Join a naturalist for a night hike and firefly search at Black Hill Regional Park. Bring your bug boxes for catching these awesome insects. Meet at the Discovery Center for a brief talk, and then we'll head out into the twilight. FOBH \$7

*Black Hill Discovery Center*

[Click to Register](#)

Jul 3	Wed	8:30-10p	Ages 2 to 12	\$8	1 Class	<a href="#">PBHDC0078-200001</a>
-------	-----	----------	--------------	-----	---------	----------------------------------

## NATURE, OUTDOOR EXPLORATION, AND SKILLS

### Stream Adventures

What lives in a stream? Wade into the water and use nets to see what insects, fish, frogs, and other animals we can find. Please wear boots or closed-toe shoes that you don't mind getting wet (no flip-flops, please!). All children must be accompanied by an adult. Meet at the gravel Boat Launch parking lot on Black Hill Road. Registration required. FOBH \$7

*Black Hill Discovery Center*

[Click to Register](#)

Jun 3	Mon	1:30-3p	Ages 2 to 12	\$8	1 Class	<a href="#">PBHDC0026-200001</a>
Jul 22	Mon	1:30-3p	Ages 2 to 12	\$8	1 Class	<a href="#">PBHDC0026-200002</a>
Aug 15	Thu	1:30-3p	Ages 2 to 12	\$8	1 Class	<a href="#">PBHDC0026-200003</a>
Aug 27	Tue	1:30-3p	Ages 2 to 12	\$8	1 Class	<a href="#">PBHDC0026-200004</a>

### Birding at Black Hill

Want to join the 45 million other bird-watching Americans, but don't know where to start? We'll start with the basics of bird identification and go over how to select and use binoculars. Then we'll go do some birding! If you have your own binoculars, please bring them along. And be sure to dress for the weather. Meet at the Discovery Center. FOBH \$11

*Black Hill Discovery Center*

[Click to Register](#)

Jul 6	Sat	9a-12p	Ages 16 and up	\$12	1 Class	<a href="#">PBHDC0060-200001</a>
Aug 3	Sat	9a-12p	Ages 16 and up	\$12	1 Class	<a href="#">PBHDC0060-200002</a>

### Play Day in the Park

Toddlers of all abilities are invited to explore the exciting natural world around the Discovery Center. Families will explore at their own pace using nature play prompts that will remain out for the duration of the program. Visit the front entrance of the Discovery Center to begin your journey through our most accessible areas of the park which are stroller friendly, with shaded areas and locations to rest. All ages are welcome but prompts and materials are geared towards children aged one to three. Registration required.

*Black Hill Discovery Center*

[Click to Register](#)

Jun 7	Fri	11a-12p	Ages 6 months to 3 years	Free	1 Class	<a href="#">PBHDC0012-200001</a>
Jul 12	Fri	11a-12p	Ages 6 months to 3 years	Free	1 Class	<a href="#">PBHDC0012-200002</a>

## DIY Nature Exploration

Stop by the Discovery Center Information Desk to pick up a themed pack and start exploring Black Hill Regional Park. Let your curiosity lead you as you follow the activities. No registration required; drop in anytime during program hours. Supplies are limited and loaned out first come, first served. One pack per family. Please return packs by 3 pm.

*Black Hill Discovery Center*

[Click to Register](#)

Jul 20	Sat	11a-1p	Ages 6 and up	Free	1 Class	<a href="#">PBHDC0084-200001</a>
--------	-----	--------	---------------	------	---------	----------------------------------

## Pics in the Park

Strike a pose and say cheese! Drop by for a unique photo op at the Discovery Center. We'll provide some fun props, and a staff member will take your photo on instant film, just like those original instant photos (shaking optional). Take home a memory you will never forget. No registration required; drop in anytime during program hours. Supplies are limited; first come, first served.

*Black Hill Discovery Center*

[Click to Register](#)

Aug 17	Sat	2-5p	All Ages	Free	1 Class	<a href="#">PBHDC0087-200001</a>
--------	-----	------	----------	------	---------	----------------------------------

## Sprinklers, Bubbles & Rainbows!

Come play in our backyard! Dance and run through sprinklers. Make bubbles with giant bubble wands. Splash in water play stations designed for the littlest of revelers. This is what summer is all about! Bring sunscreen, a towel and a change of clothes.

*Black Hill Discovery Center*

[Click to Register](#)

Aug 25	Sun	1:30-3:30p	All Ages	Free	1 Class	<a href="#">PBHDC0046-200001</a>
--------	-----	------------	----------	------	---------	----------------------------------

## DAY TRIPS AND TOURS

### Black Hill Van Trips: Hiking Trip to Wye Island

We'll travel by van to an Eastern Shore treasure, the Wye Island Natural Resource Management Area, exploring the many trails located around the island. Schoolhouse Woods Nature trail takes you through an old growth forest, while the Holly Tree Trail goes to a nearby 300-year-old holly tree. Other trails take you beneath a beautiful canopy of Osage orange trees leading to the Wye River. The natural surface trails are generally flat. Bring a bagged lunch, water, bug spray, sunscreen, and hiking shoes. Meet at Black Hill Discovery Center. FOBH \$48

*Black Hill Discovery Center*

[Click to Register](#)

Jul 2	Tue	8a-3p	Ages 18 and up	\$50	1 Class	<a href="#">PBHDC0057-200001</a>
-------	-----	-------	----------------	------	---------	----------------------------------

MONTGOMERY PARKS

# MUDFEST

**JUNE 15, 2024 | 11AM-3PM**

**\$20 / Car**

**Get down and dirty, jumping, slipping, and sliding in giant mud pits! Cook up a mud pie, make mud art, and play games! This muddy fun will be great for the whole family.**

*\*This is a rain or shine event! (Severe Weather Date of June 16.)*

**SAVE  
THE  
DATE**



**WOODSTOCK EQUESTRIAN PARK**

20207 Darnestown Road | Beallsville, MD 20842

301-528-3480 | [BlackHillDiscovery.org](http://BlackHillDiscovery.org)

f t i #MoCoMudFest



**BLACK HILL  
DISCOVERY CENTER**





**BROOKSIDE NATURE CENTER**  
 1400 Glenallan Ave | Wheaton, MD 20902  
 301-962-1480  
[BrooksideNature.org](https://BrooksideNature.org)

## ART & CRAFTING

### Upcycled Art: Fabric

Help the environment by doing your part! Learn how to repurpose items from home to create beautiful art pieces. Each program will focus on paper, plastic, or fabric. Materials will be provided but participants are welcome to bring their own. All attendees must register. Be sure to check [BrooksideNature.org](https://BrooksideNature.org) for day-of event status.

Repurpose old sheets, shirts, and jeans, and use them to create a beautiful art piece. This class is geared towards novice crafters.

*Brookside Nature Center*

[Click to Register](#)

Aug 3	Sat	10a-12p	Ages 18 and up	\$25	1 Class	<a href="#">PBNC0086-200001</a>
-------	-----	---------	----------------	------	---------	---------------------------------



LOCUST GROVE  
NATURE CENTER



**LOCUST GROVE NATURE CENTER**

7777 Democracy Blvd | Bethesda, MD 20817

301-765-8660

[LocustGroveNature.org](https://LocustGroveNature.org)

## HIKES, SCAVENGER HUNTS, AND CAMPFIRES

### Full Moon Fridays

Join us for the magic of the full moon for a hike and campfire on each Friday nearest to the full moon. Feel free to bring your own food to warm over the fire and we'll provide marshmallows. The hike will be about a half mile. The trail is on natural surfaces with dirt, rock and rut. Trails steepness varies and some trails will only be accessible with stairs. Ages 5 and up. All attendees must register.

*Locust Grove Nature Center*

[Click to Register](#)

Jun 21	Fri	6:30-8p	Ages 5 and up	\$8	1 Class	<a href="#">PLGNC0001-200001</a>
Jul 19	Fri	6:30-8p	Ages 5 and up	\$8	1 Class	<a href="#">PLGNC0001-200002</a>
Aug 16	Fri	6:30-8p	Ages 5 and up	\$8	1 Class	<a href="#">PLGNC0001-200003</a>

## NATURE, OUTDOOR EXPLORATION, AND SKILLS

### Birding for All

Birding is for anyone with a passion or interest for nature. Join us for an afternoon of birding at Locust Grove Nature Center. We will start off the program with a brief introduction to birding, along with helpful birding tips. Then for those who wish to practice their birding tips on the move, can join a naturalist on a guided walk on our trails. Another naturalist will also remain at the bird feeders with those who wish to practice their birding tips while remaining on the deck. Binoculars are recommended, however we will provide binoculars if needed. This program celebrates Pride Month by providing a safe and welcoming learning environment for all participants who would like to join, especially for members of the LGBTQIA+ community, BIPOC identities, and accessibility communities. Please register for this program.

*Locust Grove Nature Center*

[Click to Register](#)

Jun 8	Sat	4:30-6p	Ages 18 and up	Free	1 Class	<a href="#">PLGNC0044-200001</a>
-------	-----	---------	----------------	------	---------	----------------------------------







MAYDALE  
NATURE CLASSROOM



**MAYDALE NATURE CLASSROOM**

1638 Maydale Drive | Colesville, MD 20905

301-962-1496

[MaydaleNature.org](https://MaydaleNature.org)

## STORYTIME

### Storytime at Maydale

Join a naturalist for a reading of a seasonal story, participate in a hike, and make a craft to take home. Enroll in the entire series or individual sessions.

*Maydale Nature Classroom*

[Click to Register](#)

#### Around One Log

Jun 18	Tue	10-11a	Ages 3 to 7	\$6	1 Class	<a href="#">PMAY0004-200001</a>
--------	-----	--------	-------------	-----	---------	---------------------------------

#### Near One Cattail

Jul 16	Tue	10-11a	Ages 3 to 7	\$6	1 Class	<a href="#">PMAY0004-200002</a>
--------	-----	--------	-------------	-----	---------	---------------------------------

#### On Own Flower

Aug 6	Tue	10-11a	Ages 3 to 7	\$6	1 Class	<a href="#">PMAY0004-200004</a>
-------	-----	--------	-------------	-----	---------	---------------------------------

## FISHING

### Family Fishing Fun!

Join us as we set out on a half-mile walk to one of our local fishing holes! Once there, we'll provide you with your own fishing pole, bobber, and bait, as well as teach you a few basics, including casting and reeling, and you're all set! Please note that we catch and release fish and that there are no bathroom or water at the pond. All children must be accompanied by an adult.

*Maydale Nature Classroom*

[Click to Register](#)

Jul 13	Sat	10-11:30a	Ages 6 to 10	\$7	1 Class	<a href="#">PMAY0031-200001</a>
--------	-----	-----------	--------------	-----	---------	---------------------------------

Aug 10	Sat	10-11:30a	Ages 6 to 10	\$7	1 Class	<a href="#">PMAY0031-200002</a>
--------	-----	-----------	--------------	-----	---------	---------------------------------

## HIKES, SCAVENGER HUNTS, AND CAMPFIRES

### End of Summer Night Hike

Join us as we hike through the woods, meadow, and ponds of Maydale as exploring the late summer sights and sounds that surround us! Please meet at the lower parking lot. All those six years and older must register, including adults.

*Maydale Nature Classroom*

[Click to Register](#)

Aug 24	Sat	9-10p	Ages 6 and up	\$6	1 Class	<a href="#">PMAY0006-200001</a>
--------	-----	-------	---------------	-----	---------	---------------------------------

## Maydale Campfires

Enjoy a summer evening around the campfire with your family while taking in the sights and sounds of nature. Each campfire is unique with its own theme. Register for one or the entire series.

[Maydale Nature Classroom](#)

[Click to Register](#)

### Campfire Cookout: Fire and Ice

Jul 18	Thu	6-7p	Ages 3 and up	\$6	1 Class	<a href="#">PMAY0017-200001</a>
--------	-----	------	---------------	-----	---------	---------------------------------

### Campfire Cookout: S'mores Galore

Aug 8	Thu	6-7p	Ages 3 and up	\$6	1 Class	<a href="#">PMAY0017-200002</a>
-------	-----	------	---------------	-----	---------	---------------------------------

## NATURE, OUTDOOR EXPLORATION, AND SKILLS

### Bonkers for Bats

Join us as we try and sneak a peak of these mysterious night time creatures. We'll talk about the different bats in our area, issues they're facing, and what they might be up to on a summer's evening. Please meet at the lower parking lot. All those three years and older must register, including adults.

[Maydale Nature Classroom](#)

[Click to Register](#)

Jun 15	Sat	8:30-9:30p	Ages 3 and up	\$6	1 Class	<a href="#">PMAY0019-200001</a>
--------	-----	------------	---------------	-----	---------	---------------------------------

### Insect Investigations: Pollinator Treasure Hunt

Insects make the world go round. They pollinate the food we eat, keep other insect pests in check, and act as sanitation experts, cleaning up our waste. Learn more about these important creatures and how they help. Sign up for one or the entire series of family-friendly programs.

[Maydale Nature Classroom](#)

[Click to Register](#)

Jul 13	Sat	12:30-1:30p	Ages 6 to 12	Free	1 Class	<a href="#">PMAY0008-200004</a>
--------	-----	-------------	--------------	------	---------	---------------------------------

### Soil Sleuths!

Soil supports life! Join us as we survey different soil samples at Maydale to determine if their properties are sustainable for all plants and animals.

[Maydale Nature Classroom](#)

[Click to Register](#)

Aug 10	Sat	12:30-2p	Ages 6 and up	Free	1 Class	<a href="#">PMAY0020-200001</a>
--------	-----	----------	---------------	------	---------	---------------------------------



MEADOWSIDE  
NATURE CENTER



**MEADOWSIDE NATURE CENTER**

5100 Meadows Lane | Rockville, Maryland 20855

301-258-4030

[MeadowsideNature.org](https://MeadowsideNature.org)

## SPECIAL EVENTS

### Shakespeare in the Parks: A Midsummer Night's Dream

A Midsummer Night's Dream. This summer the M-NCPPC Arts and Cultural Heritage Division is thrilled to present "A Midsummer Night's Dream," directed by newly appointed Artistic Director Randy Snight. Love is in the air, but it's tangled in a romantic web involving four young Athenians. Venture into the mystical woods where fairies stir up a potion that turns the lovers' world upside down. Get ready for an unforgettable experience of whimsy, wonder, and weddings as the enchanting tale of "A Midsummer Night's Dream" comes to life on stage in this 90-minute production. Bring your lawn chair, a picnic, and enjoy the Bard under the stars.

*Meadowside Nature Center*

[Click to Register](#)

Jul 6	Sat	7:30-9p	All Ages	Free	1 Class	<a href="#">PMNC0082-200001</a>
-------	-----	---------	----------	------	---------	---------------------------------

## ART & CRAFTING

### Etch and Sip Wine Night

Make your own pieces of functional nature-themed art and enjoy your next drink in style! During this hands-on program you will be provided with the instructions, materials, and stencils needed to create your own personalized wine glass using the process of chemical glass etching. Be sure to join us after for a splash of wine in your personalized glass on our raptor deck with a naturalist-led raptor talk. Please note that this program uses the process of chemical glass etching. All necessary safety equipment will be provided. This event takes place at Meadowside Nature Center. Ages 21 and up.

*Meadowside Nature Center*

[Click to Register](#)

Jun 7	Fri	4-6p	Ages 21 and up	\$20	1 Class	<a href="#">PMNC0060-200001</a>
-------	-----	------	----------------	------	---------	---------------------------------

### Brush Strokes on the Raptor Deck- An American Sign Language Event

Picture this, you're outside on a deck watching the sunset with a glass of wine in one hand and a paintbrush in the other. This could be you! Join local artist Ellen Mansfield as she leads you through the evening to paint a nature scene. Each participant will receive a pre-sketched canvas to take home at class completion. Ellen will walk you through all the steps needed to create the picture and show you how to use brushes and paints. Feel free to bring your own peanut-free snacks. Outside drinks, including alcohol, are allowed. IDs will be checked. \*Instruction will be given in American Sign Language. A qualified interpreter will be present during the event who will give verbal instructions in English. \* Raptors will be visible at a distance from the deck during this event. This event takes place at Meadowside Nature Center.

*Meadowside Nature Center*

[Click to Register](#)

Jun 14	Fri	6-8p	Ages 18 and up	\$40	1 Class	<a href="#">PMNC0134-200001</a>
--------	-----	------	----------------	------	---------	---------------------------------

## Brush Strokes on the Raptor Deck- Family Night

On Friday night, join a family scavenger hunt and explore a trail as the sun sets. On the trail, you will gather items to make your own nature scrapbook. Local artist Pamela Gordimer will show you how to use watercolor to paint your collected treasures in your book. Each registered participant will paint their own picture. Any accompanying adult who will only provide support to an artist during the class will not need to register. All children age 18 and below must have an accompanying adult during the program.

*Meadowside Nature Center*

[Click to Register](#)

Jul 12	Fri	6-7:30p	All Ages	\$15	1 Class	<a href="#">PMNC0139-200001</a>
--------	-----	---------	----------	------	---------	---------------------------------

## Make and Take: Ferns and Ceramics

Make your very own creation with clay and imprints of live fern fronds and fiddleheads! This hands-on program will include instruction, all materials and a naturalist led stroll to discover Maryland's magical ferns. This event takes place at Meadowside Nature Center.

*Meadowside Nature Center*

[Click to Register](#)

Aug 16	Fri	6-7:30p	Ages 16 and up	\$20	1 Class	<a href="#">PMNC0140-200001</a>
--------	-----	---------	----------------	------	---------	---------------------------------

## BIRDING

### All About Birds

Learn how to spot and identify birds on a Naturalist-led birding hike, and make your own unique tea cup birdfeeders to use at home. Beginner birders are encouraged to attend! This event takes place at Meadowside Nature Center.

*Meadowside Nature Center*

[Click to Register](#)

Jun 1	Sat	10-11a	Ages 14 and up	\$10	1 Class	<a href="#">PMNC0136-200001</a>
-------	-----	--------	----------------	------	---------	---------------------------------

## CONSERVATION

### Are You Montgomery County's Next Top Energy Star?

In partnership with My Green Montgomery, we are looking for our Next Top Energy Star! Attend our Energy Star program and pass the challenges: learn about electricity, tackle the topic of pollution, and identify sources of energy. All participants will take the Energy Star Pledge and receive their very own Next Top Energy Star kit to take home to show the world that you're a Star. This event takes place at Meadowside Nature Center.

*Meadowside Nature Center*

[Click to Register](#)

Jun 8	Sat	10-11a	Ages 6 and up	Free	1 Class	<a href="#">PMNC0133-200001</a>
-------	-----	--------	---------------	------	---------	---------------------------------

## World Honeybee Day

Celebrate the insects that make our food possible on World Honeybee Day! Taste different types of honey, learn about our local bees and pollinators, and take home a bee craft. This event takes place at Meadowside Nature Center.

*Meadowside Nature Center*

[Click to Register](#)

Aug 17	Sat	10-11a	Ages 7 and up	\$7	1 Class	<a href="#">PMNC0141-200001</a>
--------	-----	--------	---------------	-----	---------	---------------------------------

## HIKES, SCAVENGER HUNTS & CAMPFIRES

### Meatless Monday Campfire Dinner

Join Meadowside Nature Center for a planet-friendly meatless campfire dinner! Enjoy veggie hot dogs, baked beans, watermelon, chips and drink along with the sights and sounds of the park at dusk. Bring your own picnic blanket, extra snacks and games to play while we cook and listen to music around the fire. Register all participants!

*Meadowside Nature Center*

[Click to Register](#)

Jun 3	Mon	5:30-6:30p	All Ages	\$10	1 Class	<a href="#">PMNC0132-200001</a>
-------	-----	------------	----------	------	---------	---------------------------------

### Pride Month Campfire and Night Hike

Celebrate Pride this season with a naturalist-led night hike referencing queer ecology, and s'mores around a cozy campfire lit up with rainbow flames. This event takes place at Meadowside Nature Center.

*Meadowside Nature Center*

[Click to Register](#)

Jun 7	Fri	8:30-9:30p	All Ages	\$7	1 Class	<a href="#">PMNC0137-200001</a>
-------	-----	------------	----------	-----	---------	---------------------------------

### Master of Miles at Meadowside

Strap on your boots and tackle almost all the trails at Meadowside Nature Center. In this multi-part series, join a Naturalist and navigate a portion of the trails during each hike. Expect to hike about 1-3 miles on natural surface trails that contain roots, rocks, uneven surfaces, mud, and some incline/decline. We will hike at a moderate pace and stop for photo opportunities and water. If you attend all hikes, you will receive your Mile Master pin! This program is open to all ages but participants must be willing and able to continue walking for 1-3 miles or until the hike is complete. See you on the trails! This event takes place at Meadowside Nature Center.

*Meadowside Nature Center*

[Click to Register](#)

Jun 12	Wed	6-7:30p	All Ages	Free	1 Class	<a href="#">PMNC0135-200001</a>
Jun 26	Wed	6-7:30p	All Ages	Free	1 Class	<a href="#">PMNC0135-200002</a>
Jul 10	Wed	6-7:30p	All Ages	Free	1 Class	<a href="#">PMNC0135-200003</a>

## Nature Glows: Campfire and Night Hike

Celebrate the beauty of summer with a night under the stars! Enjoy glowing campfire treats before walking down to the Meadowside Pond to experience nighttime frog songs and the flicker of fireflies. Bring a flashlight and be prepared for natural surface trails.

*Meadowside Nature Center*

[Click to Register](#)

Jul 22	Mon	8-9p	All Ages	\$7	1 Class	<a href="#">PMNC0138-200001</a>
--------	-----	------	----------	-----	---------	---------------------------------

## SPEAKER SERIES WORKSHOPS OR DISCUSSIONS

### Raptor Caretaker Chats

Come and learn how our Naturalist Staff care for our amazing birds of prey! Discover what raptors eat for lunch, what raptors do for fun, and how trainers build relationships with these incredible animals.

*Meadowside Nature Center*

[Click to Register](#)

Jun 1	Sat	12-12:30p	All Ages	Free	1 Class	<a href="#">PMNC0044-200001</a>
Jun 15	Sat	12-12:30p	All Ages	Free	1 Class	<a href="#">PMNC0044-200002</a>
Jun 22	Sat	12-12:30p	All Ages	Free	1 Class	<a href="#">PMNC0044-200003</a>
Jul 27	Sat	12-12:30p	All Ages	Free	1 Class	<a href="#">PMNC0044-200004</a>
Aug 3	Sat	12-12:30p	All Ages	Free	1 Class	<a href="#">PMNC0044-200005</a>
Aug 24	Sat	12-12:30p	All Ages	Free	1 Class	<a href="#">PMNC0044-200006</a>
Aug 31	Sat	12-12:30p	All Ages	Free	1 Class	<a href="#">PMNC0044-200007</a>

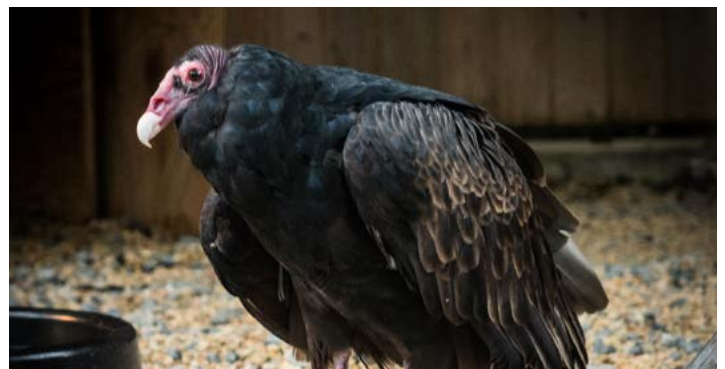
### Visit a Vulture

Come by our Nature Playspace, and watch Gilly the Vulture train with her caretakers! Ask vulture questions, volunteer in a training session, or just relax and enjoy a vulture visit

*Meadowside Nature Center*

[Click to Register](#)

Jun 17	Mon	10:30-11a	All Ages	Free	1 Class	<a href="#">PMNC0085-200001</a>
Jul 8	Mon	10:30-11a	All Ages	Free	1 Class	<a href="#">PMNC0085-200002</a>
Aug 12	Mon	10:30-11a	All Ages	Free	1 Class	<a href="#">PMNC0085-200003</a>





Rent a kayak,  
canoe, pedal  
boat, or  
rowboat and  
spend a day on  
the water



**BLACK HILL BOATS**

20920 Lake Ridge Drive | Boyds, MD 20841  
[BlackHillBoats.org](http://BlackHillBoats.org)

**LAKE NEEDWOOD BOATS**

15700 Needwood Lake Circle | Rockville, MD 20855  
[LakeNeedwoodBoats.org](http://LakeNeedwoodBoats.org)

★ **OPENING MEMORIAL DAY WEEKEND** ★

Cool off in  
the 280-jet  
water maze  
or challenge  
yourself to  
a round of  
miniature golf



**SOUTH GERMANTOWN SPLASHPARK & MINIGOLF**

18056 Central Park Circle | Boyds, MD 20841  
[SplashandGolf.com](http://SplashandGolf.com)



SOUTH GERMANTOWN  
**Driving**  
**RANGE**



**SOUTH GERMANTOWN DRIVING RANGE**  
18045 Central Park Circle | Boyds, MD 20841  
301-670-4670  
[SGDrivingRange.org](https://SGDrivingRange.org)

## GOLF

### Beginning Golf, Adult

If you have always wanted to try golf or have not played in years and want to pick it up again, this is an easy, inexpensive way to get into the sport. For just \$99, you will get four weeks of professional instruction from a Montgomery County Golf Academy Certified Instructor, and learn the basics of golf: proper stance, grip, chipping, putting, driving, golf etiquette, and more. Fee covers loaner clubs and balls. Class sizes are small (no more than 8 students), so you are sure to get a good bit of personal attention.

#### *South Germantown Driving Range*

[Click to Register](#)

Jun 11-Jul 2	Tue	5:30-6:30p	Ages 18 and up	\$99	4 Classes	<a href="#">PSGDR2010-100001</a>
Jun 13-Jul 11	Thu	5:30-6:30p	Ages 18 and up	\$99	4 Classes	<a href="#">PSGDR2010-100002</a>
Jun 15-Jul 13	Sat	2:30-3:30p	Ages 18 and up	\$99	4 Classes	<a href="#">PSGDR2010-100003</a>
Jul 23-Aug 13	Tue	5:30-6:30p	Ages 18 and up	\$99	4 Classes	<a href="#">PSGDR2010-100004</a>
Jul 25-Aug 15	Thu	5:30-6:30p	Ages 18 and up	\$99	4 Classes	<a href="#">PSGDR2010-100005</a>
Jul 27-Aug 17	Sat	2:30-3:30p	Ages 18 and up	\$99	4 Classes	<a href="#">PSGDR2010-100006</a>

### Beginning Golf, Junior

If you have always wanted to try golf or have not played in years and want to pick it up again, this is an easy, inexpensive way to get into the sport. For just \$99, you will get four weeks of professional instruction from a Montgomery County Golf Academy Certified Instructor, and learn the basics of golf: proper stance, grip, chipping, putting, driving, golf etiquette, and more. Fee covers loaner clubs and balls. Class sizes are small (no more than 8 students), so you are sure to get a good bit of personal attention.

#### *South Germantown Driving Range*

[Click to Register](#)

Jun 15-Jul 13	Sat	3:30-4:30p	Ages 7 to 15	\$99	4 Classes	<a href="#">PSGDR2011-100001</a>
Jul 27-Aug 17	Sat	3:30-4:30p	Ages 7 to 15	\$99	4 Classes	<a href="#">PSGDR2011-100002</a>

### Junior Golf Clinic

One day clinics are a great way for your junior golfer to learn and gradually improve skills on a month-to-month basis. Each month we will offer various clinics, each focusing on a particular swing or golf skill. You choose which classes you want and register and pay for them at one time. It's golf 'a' la carte! Visit our website or check the Clubhouse for specific skills schedule.

#### *South Germantown Driving Range*

[Click to Register](#)

Jun 22	Sat	1-2p	Ages 7 to 15	\$15	1 Class	<a href="#">PSGDR2012-100003</a>
Jul 13	Sat	1-2p	Ages 7 to 15	\$15	1 Class	<a href="#">PSGDR2012-100004</a>
Aug 3	Sat	1-2p	Ages 7 to 15	\$15	1 Class	<a href="#">PSGDR2012-100005</a>
Aug 17	Sat	1-2p	Ages 7 to 15	\$15	1 Class	<a href="#">PSGDR2012-100006</a>

## Parent and Child Golf

Golf is a great game for kids to start early, and you will have a great time learning together. With the help of a Montgomery County Golf Academy Certified Instructor, you and your child (age 7-14) will learn the basics of golf, including proper stance, grip, chipping, putting, driving, and more. If you are already a golfer, the instructor will work with you at your level to help you improve your game. Fee covers one child and one adult; register the child only. Fee covers instruction, loaner clubs and balls.

### South Germantown Driving Range

[Click to Register](#)

Jun 15-Jul 13	Sat	11a-12p	Ages 7 to 15	\$120	4 Classes	<a href="#">PSGDR2015-100001</a>
Jun 15-Jul 13	Sat	12-1p	Ages 7 to 15	\$120	4 Classes	<a href="#">PSGDR2015-100002</a>
Jun 15-Jul 13	Sat	4:30-5:30p	Ages 7 to 15	\$120	4 Classes	<a href="#">PSGDR2015-100003</a>
Jul 27-Aug 17	Sat	11a-12p	Ages 7 to 15	\$120	4 Classes	<a href="#">PSGDR2015-100004</a>
Jul 27-Aug 17	Sat	12-1p	Ages 7 to 15	\$120	4 Classes	<a href="#">PSGDR2015-100005</a>
Jul 27-Aug 17	Sat	4:30-5:30p	Ages 7 to 15	\$120	4 Classes	<a href="#">PSGDR2015-100006</a>

## ARCHERY

### Level 1 Archery

Interested in learning archery? Participants will learn basic skills and safety instruction. You will learn how to hold, aim, draw, and shoot a bow. We will introduce or build on participant’s current knowledge/skills of archery and provide time to practice each new skill. We will supply all the equipment, a safe place to shoot, and a Certified Instructor to guide you. Please bring a water bottle and dress for the weather.

### South Germantown Driving Range

[Click to Register](#)

Jul 27-Aug 17	Sat	2-3:30p	Ages 8 to 15	\$50	4 Classes	<a href="#">PSGDR2001-100001</a>
Jun 9-Jul 7	Sun	2-3:30p	Ages 8 to 15	\$50	4 Classes	<a href="#">PSGDR2001-100002</a>
Jun 15-Jul 13	Sat	2-3:30p	Ages 8 to 15	\$50	4 Classes	<a href="#">PSGDR2001-100003</a>
Jul 21-Aug 11	Sun	2-3:30p	Ages 8 to 15	\$50	4 Classes	<a href="#">PSGDR2001-100004</a>





## Level 2 Archery

Prerequisite: Passed Beginner Archery Interested in more archery? Intermediate archery focuses on the draw cycle. You will learn how to anchor, transfer/hold, aim, and release/follow through. We will supply all the equipment, a safe place to shoot, and a Certified Instructor to guide you. Please bring a water bottle and dress for the weather.

### South Germantown Driving Range

[Click to Register](#)

Jun 15-Jul 13	Sat	3:30-5p	Ages 8 to 15	\$50	4 Classes	<a href="#">PSGDR2003-100001</a>
Jun 9-Jul 7	Sun	3:30-5p	Ages 8 to 15	\$50	4 Classes	<a href="#">PSGDR2003-100002</a>
Jul 21-Aug 11	Sun	3:30-5p	Ages 8 to 15	\$50	4 Classes	<a href="#">PSGDR2003-100003</a>
Jul 27-Aug 17	Sat	3:30-5p	Ages 8 to 15	\$50	4 Classes	<a href="#">PSGDR2003-100004</a>

## Parent and Child Archery

Whether you are a novice, or you shoot better than Robin Hood, this class is for parent/guardian and their children interested in the sport of archery. It is a really FUN way for boys and girls to learn about archery in a positive learning environment involving both parent and child! Participants should wear comfortable clothing. This is an outdoor class, so participants should dress accordingly. Fee covers one child and one adult; register the child only.

### South Germantown Driving Range

[Click to Register](#)

Jun 15-Jul 13	Sat	12:30-2p	Ages 7 to 15	\$65	4 Classes	<a href="#">PSGDR2004-100001</a>
Jun 9-Jul 7	Sun	12:30-2p	Ages 7 to 15	\$65	4 Classes	<a href="#">PSGDR2004-100002</a>
Jul 27-Aug 17	Sat	12:30-2p	Ages 7 to 15	\$65	4 Classes	<a href="#">PSGDR2004-100003</a>
Jul 21-Aug 11	Sun	12:30-2p	Ages 7 to 15	\$65	4 Classes	<a href="#">PSGDR2004-100004</a>



**CABIN JOHN ICE RINK**

10610 Westlake Dr | Rockville, MD 20852  
301-765-8620  
[CabinJohnIce.org](https://CabinJohnIce.org)

**WHEATON ICE ARENA**

11717 Orebaugh Ave | Wheaton, MD 20902  
301-905-3000  
[WheatonIceArena.org](https://WheatonIceArena.org)

**CLASS DATES**

Registration Opens June 11, 6:30 am

Registration Dates: June 11-20.

Class Dates: June 22-Aug. 8.

No Classes: July 4, Aug. 3-7

**On your first day of class...**

- Check in at the Group Lesson area in the rink lobby.
- Wear one pair of thin long socks that cover your ankles.
- Helmets and gloves are highly recommended for safety.
- Arrive at the rink 30 minutes early for your first lesson, and 15–20 minutes early for subsequent lessons to have time to get skates on properly.
- Pick up your skates at the skate exchange. Ask for one size smaller than your sneaker size. You'll have better balance and protections against injuries.

**EVENTS AND IMPORTANT DATES:**

- June 19- Open for public skating
- July 4- Rinks are closed

**COURSE FEES COVER**

1. Six instructed group lessons
2. Skate rental
3. A practice pass good for public skating admissions and skate rental during the lesson series

**PLEASE NOTE**

- No make-ups or refunds for missed lessons.
- Please read course descriptions carefully and select courses that match the skater's ability and experience. At the end of each class series, the skater will receive an evaluation form recommending the class that should be taken in the future.
- If you see a class you like, register! Classes may be canceled or combined if a minimum enrollment is not met.
- If you wish to practice on the same day as your lesson, please see the public skating schedules before signing up
- Skaters will receive a ribbon award at the end of the course.

# PUBLIC SESSIONS

Visit our websites for schedules and pricing.

[CabinJohnIce.org](https://CabinJohnIce.org)  
[WheatonIceArena.org](https://WheatonIceArena.org)



## ICE SKATING

### Parent and Tot Ice Skating

Skating is fun, and great exercise for you and your child! This class teaches toddlers (ages 3-5) beginning skating skills with Mom or Dad right there to help them feel safe. We'll teach your child how to fall down and get up, and march while moving on the ice. Parents will need basic skating skills in order to skate with their child. Fee covers registration for child and parent, skate rental for child and parent, and a practice card good for admission to six public skate sessions to practice skills learned in class. Register only the child for the course. Equipment Required: Helmet & Gloves.

#### *Cabin John Ice Rink*

[Click to Register](#)

Jun 23-Jul 28	Sun	12-12:30p	Ages 3 to 5	\$114	6 Classes	<a href="#">PICE0100-212001</a>
Jun 22-Jul 27	Sat	9:45-10:15a	Ages 3 to 5	\$114	6 Classes	<a href="#">PICE0100-212003</a>

#### *Wheaton Ice Arena*

[Click to Register](#)

Jun 23-Jul 28	Sun	1:15-1:45p	Ages 3 to 5	\$114	6 Classes	<a href="#">PICE0100-215001</a>
Jun 22-Jul 27	Sat	10:45-11:15a	Ages 3 to 5	\$114	6 Classes	<a href="#">PICE0100-215002</a>

### Preschool Ice Skating 1 (Beginner)

This class is designed for children ages 3-5 who are beginning skaters. Skaters will learn how to sit and stand up on skates (off and on the ice); march in place; march forward; glide on two feet; and dip in place. Fee includes rental skates and a practice card good for admission to six public skate sessions for the skater to practice skills learned in class. Equipment required: Helmet and gloves

#### *Cabin John Ice Rink*

[Click to Register](#)

Jun 23-Jul 28	Sun	12-12:30p	Ages 3 to 5	\$114	6 Classes	<a href="#">PICE0101-212000</a>
Jun 24-Jul 29	Mon	3:30-4p	Ages 3 to 5	\$114	6 Classes	<a href="#">PICE0101-212001</a>
Jun 25-Jul 30	Tue	3:45-4:15p	Ages 3 to 5	\$114	6 Classes	<a href="#">PICE0101-212002</a>
Jun 26-Jul 31	Wed	4:30-5p	Ages 3 to 5	\$114	6 Classes	<a href="#">PICE0101-212003</a>
Jun 22-Jul 27	Sat	9:45-10:15a	Ages 3 to 5	\$114	6 Classes	<a href="#">PICE0101-212004</a>

#### *Wheaton Ice Arena*

[Click to Register](#)

Jun 23-Jul 28	Sun	1:15-1:45p	Ages 3 to 5	\$114	6 Classes	<a href="#">PICE0101-215001</a>
Jun 27-Aug 8	Thu	5:45-6:15p	Ages 3 to 5	\$114	6 Classes	<a href="#">PICE0101-215002</a>
Jun 22-Jul 27	Sat	10:45-11:15a	Ages 3 to 5	\$114	6 Classes	<a href="#">PICE0101-215003</a>



## Preschool Ice Skating 2

Prerequisite: Preschool Ice Skating 1. This skating class is for children between the ages of 3-5. Skaters will learn how to march followed by a long glide, dip while moving, backward wiggles, forward two-foot swizzles, beginning snowplow stop, and a two-foot hop in place. Fee includes rental skates and a practice card good for admission to six public skate sessions for the skater to practice skills learned in class. Equipment Required: Helmet & Gloves

### *Cabin John Ice Rink*

[Click to Register](#)

Jun 23-Jul 28	Sun	12-12:30p	Ages 3 to 5	\$114	6 Classes	<a href="#">PICE0102-212001</a>
Jun 25-Jul 30	Tue	3:45-4:15p	Ages 3 to 5	\$114	6 Classes	<a href="#">PICE0102-212002</a>
Jun 26-Jul 31	Wed	4:30-5p	Ages 3 to 5	\$114	6 Classes	<a href="#">PICE0102-212003</a>
Jun 22-Jul 27	Sat	9:45-10:15a	Ages 3 to 5	\$114	6 Classes	<a href="#">PICE0102-212004</a>

### *Wheaton Ice Arena*

[Click to Register](#)

Jun 23-Jul 28	Sun	1:15-1:45p	Ages 3 to 5	\$114	6 Classes	<a href="#">PICE0102-215001</a>
Jun 27-Aug 8	Thu	5:45-6:15p	Ages 3 to 5	\$114	6 Classes	<a href="#">PICE0102-215002</a>
Jun 22-Jul 27	Sat	10:45-11:15a	Ages 3 to 5	\$114	6 Classes	<a href="#">PICE0102-215003</a>

## Preschool Ice Skating 3

Prerequisite: Preschool Ice Skating 2. This class is for skaters ages 3-5. Skater will learn forward skating, forward one-foot glides, forward and backward swizzles, a snowplow stop, and curves. Fee includes skate rental and a practice card good for admission to six public skate sessions to practice skills learned in class. Equipment Required: Helmet & Gloves.

### *Cabin John Ice Rink*

[Click to Register](#)

Jun 23-Jul 28	Sun	1:30-2p	Ages 3 to 5	\$114	6 Classes	<a href="#">PICE0103-212001</a>
Jun 25-Jul 30	Tue	3:45-4:15p	Ages 3 to 5	\$114	6 Classes	<a href="#">PICE0103-212002</a>
Jun 26-Jul 31	Wed	4:30-5p	Ages 3 to 5	\$114	6 Classes	<a href="#">PICE0103-212003</a>
Jun 22-Jul 27	Sat	9:45-10:15a	Ages 3 to 5	\$114	6 Classes	<a href="#">PICE0103-212004</a>

### *Wheaton Ice Arena*

[Click to Register](#)

Jun 23-Jul 28	Sun	1:45-2:15p	Ages 3 to 5	\$114	6 Classes	<a href="#">PICE0103-215001</a>
Jun 27-Aug 8	Thu	5:45-6:15p	Ages 3 to 5	\$114	6 Classes	<a href="#">PICE0103-215003</a>
Jun 22-Jul 27	Sat	10:45-11:15a	Ages 3 to 5	\$114	6 Classes	<a href="#">PICE0103-215004</a>

## Preschool Ice Skating 4

Prerequisite: Preschool Ice Skating 3. This class is for skaters ages 3-5. Skater will learn forward skating, backward two-foot glides, backward swizzles, rocking horse, two-foot turns from forward to backward in place, and two-foot hop. Fee includes skate rental and a practice card good for admission to six public skate sessions to practice skills learned in class. Equipment Required: Helmet & Gloves.

### Cabin John Ice Rink

[Click to Register](#)

Jun 23-Jul 28	Sun	12:30-1p	Ages 3 to 5	\$114	6 Classes	<a href="#">PICE0104-212000</a>
Jun 23-Jul 28	Sun	1:30-2p	Ages 3 to 5	\$114	6 Classes	<a href="#">PICE0104-212001</a>
Jun 25-Jul 30	Tue	3:45-4:15p	Ages 3 to 5	\$114	6 Classes	<a href="#">PICE0104-212002</a>
Jun 26-Jul 31	Wed	4:30-5p	Ages 3 to 5	\$114	6 Classes	<a href="#">PICE0104-212003</a>
Jun 22-Jul 27	Sat	9:45-10:15a	Ages 3 to 5	\$114	6 Classes	<a href="#">PICE0104-212004</a>

### Wheaton Ice Arena

[Click to Register](#)

Jun 23-Jul 28	Sun	1:45-2:15p	Ages 3 to 5	\$114	6 Classes	<a href="#">PICE0104-215001</a>
Jun 27-Aug 8	Thu	5:45-6:15p	Ages 3 to 5	\$114	6 Classes	<a href="#">PICE0104-215002</a>
Jun 22-Jul 27	Sat	10:45-11:15a	Ages 3 to 5	\$114	6 Classes	<a href="#">PICE0104-215003</a>

## Youth Ice Skating 1 (Beginner)

This class is for beginner skaters ages 6-12. Skaters will learn how to sit on the ice and stand up, march forward across the ice, forward two-foot glide, dip, forward swizzles, backward wiggles, beginning snowplow stops, and a two-foot hop. Fee includes skate rental plus a practice card good for admission to six public skate sessions to practice skills learned in class. Helmet & gloves are required (bike helmet is fine).

### Cabin John Ice Rink

[Click to Register](#)

Jun 23-Jul 28	Sun	12:30-1p	Ages 6 to 12	\$114	6 Classes	<a href="#">PICE0201-212001</a>
Jun 23-Jul 28	Sun	1:30-2p	Ages 6 to 12	\$114	6 Classes	<a href="#">PICE0201-212002</a>
Jun 24-Jul 29	Mon	3:30-4p	Ages 6 to 12	\$114	6 Classes	<a href="#">PICE0201-212003</a>
Jun 26-Jul 31	Wed	5-5:30p	Ages 6 to 12	\$114	6 Classes	<a href="#">PICE0201-212005</a>
Jun 27-Aug 8	Thu	3:30-4p	Ages 6 to 12	\$114	6 Classes	<a href="#">PICE0201-212006</a>
Jun 22-Jul 27	Sat	11:15-11:45a	Ages 6 to 12	\$114	6 Classes	<a href="#">PICE0201-212007</a>

### Wheaton Ice Arena

[Click to Register](#)

Jun 23-Jul 28	Sun	1:15-1:45p	Ages 6 to 12	\$114	6 Classes	<a href="#">PICE0201-215001</a>
Jun 27-Aug 8	Thu	5:45-6:15p	Ages 6 to 12	\$114	6 Classes	<a href="#">PICE0201-215002</a>
Jun 22-Jul 27	Sat	10:45-11:15a	Ages 6 to 12	\$114	6 Classes	<a href="#">PICE0201-215003</a>

## Youth Ice Skating 2

Prerequisite: Passed Youth Ice Skating 1 or Preschool Ice Skating 4. This class is for skaters ages 4-12. Skaters will learn forward one-foot glides, backward two-foot glide, rocking horse, scooter pushes, backward swizzles, a two-foot turn from forward to backward in place, and a moving snowplow stop. Fee includes skate rental plus a practice card good for admission to six public skate sessions to practice skills learned in class. Helmet and gloves are strongly recommended.

### *Cabin John Ice Rink*

[Click to Register](#)

Jun 23-Jul 28	Sun	12:30-1p	Ages 4 to 12	\$114	6 Classes	<a href="#">PICE0202-212000</a>
Jun 23-Jul 28	Sun	1-1:30p	Ages 4 to 12	\$114	6 Classes	<a href="#">PICE0202-212001</a>
Jun 23-Jul 28	Sun	2-2:30p	Ages 4 to 12	\$114	6 Classes	<a href="#">PICE0202-212002</a>
Jun 24-Jul 29	Mon	4-4:30p	Ages 4 to 12	\$114	6 Classes	<a href="#">PICE0202-212003</a>
Jun 26-Jul 31	Wed	5-5:30p	Ages 4 to 12	\$114	6 Classes	<a href="#">PICE0202-212005</a>
Jun 27-Aug 8	Thu	4-4:30p	Ages 4 to 12	\$114	6 Classes	<a href="#">PICE0202-212006</a>
Jun 22-Jul 27	Sat	11:15-11:45a	Ages 4 to 12	\$114	6 Classes	<a href="#">PICE0202-212007</a>

### *Wheaton Ice Arena*

[Click to Register](#)

Jun 23-Jul 28	Sun	1:15-1:45p	Ages 4 to 12	\$114	6 Classes	<a href="#">PICE0202-215001</a>
Jun 27-Aug 8	Thu	5:45-6:15p	Ages 4 to 12	\$114	6 Classes	<a href="#">PICE0202-215004</a>
Jun 22-Jul 27	Sat	10:45-11:15a	Ages 4 to 12	\$114	6 Classes	<a href="#">PICE0202-215005</a>



## Youth Ice Skating 3

Prerequisite: Passed Youth Ice Skating 2. Skaters will learn forward stroking, forward half-swizzle pumps on a circle, moving forward to backward two-foot turns, backward one-foot glides, backward snowplow stop, forward slaloms, and forward pivot. Fee includes skate rental plus a practice card good for admission to six public skate sessions to practice skills learned in class.

### *Cabin John Ice Rink*

[Click to Register](#)

Jun 23-Jul 28	Sun	12:30-1p	Ages 4 to 12	\$114	6 Classes	<a href="#">PICE0203-212000</a>
Jun 23-Jul 29	Sun	1-1:30p	Ages 4 to 12	\$114	6 Classes	<a href="#">PICE0203-212001</a>
Jun 23-Jul 28	Sun	2-2:30p	Ages 4 to 12	\$114	6 Classes	<a href="#">PICE0203-212002</a>
Jun 24-Jul 29	Mon	4-4:30p	Ages 4 to 12	\$114	6 Classes	<a href="#">PICE0203-212003</a>
Jun 25-Jul 30	Tue	4:15-4:45p	Ages 4 to 12	\$114	6 Classes	<a href="#">PICE0203-212004</a>
Jun 26-Jul 31	Wed	4-4:30p	Ages 4 to 12	\$114	6 Classes	<a href="#">PICE0203-212005</a>
Jun 26-Jul 31	Wed	5-5:30p	Ages 4 to 12	\$114	6 Classes	<a href="#">PICE0203-212006</a>
Jun 27-Aug 8	Thu	4-4:30p	Ages 4 to 12	\$114	6 Classes	<a href="#">PICE0203-212007</a>
Jun 22-Jul 27	Sat	11:15-11:45a	Ages 4 to 12	\$114	6 Classes	<a href="#">PICE0203-212008</a>

### *Wheaton Ice Arena*

[Click to Register](#)

Jun 23-Jul 28	Sun	1:45-2:15p	Ages 4 to 12	\$114	6 Classes	<a href="#">PICE0203-215001</a>
Jun 27-Aug 8	Thu	6:15-6:45p	Ages 4 to 12	\$114	6 Classes	<a href="#">PICE0203-215003</a>

## Youth Ice Skating 4

Prerequisite: Passed Youth Ice Skating 3. Skaters will learn forward outside and inside edges on a circle (R and L), forward crossovers, backward half-swizzle pumps on a circle, backward one-foot glides, beginning two-foot spin, and forward lunges. Fee includes skate rental plus a practice card good for admission to six public skate sessions to practice skills learned in class.

### *Cabin John Ice Rink*

[Click to Register](#)

Jun 23-Jul 28	Sun	12-12:30p	Ages 4 to 12	\$114	6 Classes	<a href="#">PICE0204-212001</a>
Jun 23-Jul 28	Sun	1-1:30p	Ages 4 to 12	\$114	6 Classes	<a href="#">PICE0204-212002</a>
Jun 24-Jul 29	Mon	4:30-5p	Ages 4 to 12	\$114	6 Classes	<a href="#">PICE0204-212003</a>
Jun 25-Jul 30	Tue	4:15-4:45p	Ages 4 to 12	\$114	6 Classes	<a href="#">PICE0204-212004</a>
Jun 26-Jul 31	Wed	4-4:30p	Ages 4 to 12	\$114	6 Classes	<a href="#">PICE0204-212005</a>
Jun 27-Aug 8	Thu	4:30-5p	Ages 4 to 12	\$114	6 Classes	<a href="#">PICE0204-212006</a>
Jun 22-Jul 27	Sat	11:15-11:45a	Ages 4 to 12	\$114	6 Classes	<a href="#">PICE0204-212007</a>

### *Wheaton Ice Arena*

[Click to Register](#)

Jun 23-Jul 28	Sun	1:45-2:15p	Ages 4 to 12	\$114	6 Classes	<a href="#">PICE0204-215001</a>
Jun 27-Aug 8	Thu	6:15-6:45p	Ages 4 to 12	\$114	6 Classes	<a href="#">PICE0204-215002</a>

## Youth Ice Skating 5

Prerequisite: Passed Youth Ice Skating 4. Skaters will learn backward outside and inside edges on a circle (R and L), backward crossovers, forward outside three-turns, advanced two-foot spin, hockey stop, and side toe hop. Fee includes skate rental plus a practice card good for admission to six public skate sessions to practice skills learned in class.

### *Cabin John Ice Rink*

[Click to Register](#)

Jun 23-Jul 28	Sun	12-12:30p	Ages 4 to 12	\$114	6 Classes	<a href="#">PICE0205-212001</a>
Jun 23-Jul 28	Sun	1-1:30p	Ages 4 to 12	\$114	6 Classes	<a href="#">PICE0205-212002</a>
Jun 24-Jul 29	Mon	4:30-5p	Ages 4 to 12	\$114	6 Classes	<a href="#">PICE0205-212003</a>
Jun 25-Jul 30	Tue	4:15-4:45p	Ages 4 to 12	\$114	6 Classes	<a href="#">PICE0205-212004</a>
Jun 26-Jul 31	Wed	3:30-4p	Ages 4 to 12	\$114	6 Classes	<a href="#">PICE0205-212005</a>
Jun 27-Aug 8	Thu	4:30-5p	Ages 4 to 12	\$114	6 Classes	<a href="#">PICE0205-212006</a>
Jun 22-Jul 27	Sat	11:15-11:45a	Ages 4 to 12	\$114	6 Classes	<a href="#">PICE0205-212007</a>

### *Wheaton Ice Arena*

[Click to Register](#)

Jun 23-Jul 28	Sun	1:45-2:15p	Ages 4 to 12	\$114	6 Classes	<a href="#">PICE0205-215001</a>
Jun 27-Aug 8	Thu	6:15-6:45p	Ages 4 to 12	\$114	6 Classes	<a href="#">PICE0205-215002</a>

## Youth Ice Skating 6

Prerequisite: Passed Youth Ice Skating 5. Skaters will learn forward inside three-turns, moving backward to forward two-foot turns on a circle, backward stroking, T-stop, bunny hops, forward spiral on a straight line, beginning one-foot spin, and shoot the duck. Fee includes skate rental plus a practice card good for admission to public skate sessions to practice skills learned in class.

### *Cabin John Ice Rink*

[Click to Register](#)

Jun 23-Jul 28	Sun	1:30-2:15p	Ages 4 to 12	\$171	6 Classes	<a href="#">PICE0206-212000</a>
Jun 24-Jul 29	Mon	5-5:45p	Ages 4 to 12	\$171	6 Classes	<a href="#">PICE0206-212001</a>
Jun 27-Aug 8	Thu	5-5:45p	Ages 4 to 12	\$171	6 Classes	<a href="#">PICE0206-212003</a>
Jun 22-Jul 27	Sat	9-9:45a	Ages 4 to 12	\$171	6 Classes	<a href="#">PICE0206-212004</a>

### *Wheaton Ice Arena*

[Click to Register](#)

Jun 23-Jul 28	Sun	2:15-2:45p	Ages 4 to 12	\$114	6 Classes	<a href="#">PICE0206-215001</a>
Jun 27-Aug 8	Thu	6:15-6:45p	Ages 4 to 12	\$114	6 Classes	<a href="#">PICE0206-215002</a>

## Therapeutic Ice Skating 1

Ages 18 and under. This beginning ice skating class is for people with cognitive and/or developmental disabilities who want to learn how to ice skate. Skaters will learn proper technique to fall on the ice and recover, skate forward, and stop safely. Fee includes skate rental plus a practice card good for admission to six public skate sessions to practice skills learned in class. Helmet and gloves are required.

*Cabin John Ice Rink*

[Click to Register](#)

Jun 22-Jul 27	Sat	8:15-8:45a	Ages 4 to 18	\$114	6 Classes	<a href="#">PICE0215-212001</a>
---------------	-----	------------	--------------	-------	-----------	---------------------------------

## Teen and Adult Ice Skating 1

This class is for beginner teen & adult skaters. Learn falling & recovery, forward marching, forward two-foot glide, forward swizzles, one forward/one backward swizzle, dip, and forward snowplow stop. Fee includes skate rental (if needed) plus a skating practice card. Helmet & gloves are strongly recommended.

*Cabin John Ice Rink*

[Click to Register](#)

Jun 23-Jul 28	Sun	2-2:30p	Ages 13 and up	\$114	6 Classes	<a href="#">PICE0220-212001</a>
Jun 26-Jul 31	Wed	6:15-6:45p	Ages 13 and up	\$114	6 Classes	<a href="#">PICE0220-212002</a>
Jun 22-Jul 27	Sat	9:45-10:15a	Ages 13 and up	\$114	6 Classes	<a href="#">PICE0220-212003</a>

*Wheaton Ice Arena*

[Click to Register](#)

Jun 23-Jul 28	Sun	1:45-2:15p	Ages 13 and up	\$114	6 Classes	<a href="#">PICE0220-215001</a>
Jun 27-Aug 8	Thu	7:15-7:45p	Ages 13 and up	\$114	6 Classes	<a href="#">PICE0220-215003</a>

## Teen and Adult Ice Skating 2

Prerequisite: Passed Teen and Adult Ice Skating 1. Learn forward skating, forward one-foot glides, forward slalom, backward skating, backward swizzles, and two-foot turns in place. Fee includes skate rental (if needed) plus a skating practice card.

*Cabin John Ice Rink*

[Click to Register](#)

Jun 23-Jul 28	Sun	2-2:30p	Ages 13 and up	\$114	6 Classes	<a href="#">PICE0221-212001</a>
Jun 26-Jul 31	Wed	6:45-7:15p	Ages 13 and up	\$114	6 Classes	<a href="#">PICE0221-212002</a>
Jun 22-Jul 27	Sat	9:45-10:15a	Ages 13 and up	\$114	6 Classes	<a href="#">PICE0221-212003</a>

*Wheaton Ice Arena*

[Click to Register](#)

Jun 23-Jul 28	Sun	2:15-2:45p	Ages 13 and up	\$114	6 Classes	<a href="#">PICE0221-215001</a>
Jun 27-Aug 8	Thu	7:15-7:45p	Ages 13 and up	\$114	6 Classes	<a href="#">PICE0221-215003</a>

## Teen and Adult Ice Skating 3

Prerequisite: Passed Teen and Adult Ice Skating 2. Learn forward stroking, forward half-swizzle pumps on circle, moving forward to backward and backward to forward two-foot turn on a circle, backward skating & glide, forward chasses on a circle, and backward snowplow stop. Fee includes skate rental (if needed) plus a skating practice card.

### *Cabin John Ice Rink*

[Click to Register](#)

Jun 26-Jul 31	Wed	6:15-7p	Ages 13 and up	\$171	6 Classes	<a href="#">PICE0222-212001</a>
Jun 22-Jul 27	Sat	9-9:45a	Ages 13 and up	\$171	6 Classes	<a href="#">PICE0222-212002</a>

### *Wheaton Ice Arena*

[Click to Register](#)

Jun 23-Jul 28	Sun	2:15-2:45p	Ages 13 and up	\$114	6 Classes	<a href="#">PICE0222-215001</a>
Jun 18-Jul 23	Tue	7-7:30p	Ages 13 and up	\$114	6 Classes	<a href="#">PICE0222-215002</a>
Jun 27-Aug 8	Thu	7:15-7:45p	Ages 13 and up	\$114	6 Classes	<a href="#">PICE0222-215003</a>

## Teen and Adult Ice Skating 4

Prerequisite: Passed Teen and Adult Ice Skating 3. Learn forward outside & inside edges on a circle, forward crossovers, backward one-foot glides, backward half swizzle pumps on a circle and Hockey stop. Fee includes skate rental (if needed) plus a skating practice card.

### *Cabin John Ice Rink*

[Click to Register](#)

Jun 26-Jul 31	Wed	6:15-7p	Ages 13 and up	\$171	6 Classes	<a href="#">PICE0223-212001</a>
Jun 22-Jul 27	Sat	9-9:45a	Ages 13 and up	\$171	6 Classes	<a href="#">PICE0223-212002</a>

### *Wheaton Ice Arena*

[Click to Register](#)

Jun 18-Jul 23	Tue	7-7:30p	Ages 13 and up	\$114	6 Classes	<a href="#">PICE0223-215001</a>
Jun 27-Aug 8	Thu	7:15-7:45p	Ages 13 and up	\$114	6 Classes	<a href="#">PICE0223-215002</a>

## Teen and Adult Ice Skating Advanced

Passed Teen and Adult Ice Skating 4. Learn back edges on a circle, backward crossovers, outside three-turn, swing rolls, advanced stroking with crossovers forwards & backwards, forward inside three-turns, forward outside to inside change of edge power pulls, T-stop, Lunge, and two-foot to one-foot spins. Fee includes skate rental (if needed) plus a skating practice card.

### *Cabin John Ice Rink*

[Click to Register](#)

Jun 26-Jul 31	Wed	6:15-7p	Ages 13 and up	\$171	6 Classes	<a href="#">PICE0224-212001</a>
Jun 22-Jul 27	Sat	9-9:45a	Ages 13 and up	\$171	6 Classes	<a href="#">PICE0224-212002</a>

### *Wheaton Ice Arena*

[Click to Register](#)

Jun 18-Jul 23	Tue	6:30-7p	Ages 13 and up	\$114	6 Classes	<a href="#">PICE0224-215001</a>
Jun 27-Aug 8	Thu	6:45-7:15p	Ages 13 and up	\$114	6 Classes	<a href="#">PICE0224-215002</a>

## Teen and Adult Free Skate

Prerequisite: Passed Teen and Adult Ice Skating Advanced. This class will focus on introductory free skating skills including beginner jumps and spins. Fee includes skate rental (if needed) plus a skating practice card.

### Cabin John Ice Rink

[Click to Register](#)

Jun 26-Jul 31	Wed	6:15-7p	Ages 13 and up	\$171	6 Classes	<a href="#">PICE0225-212001</a>
Jun 22-Jul 27	Sat	9-9:45a	Ages 13 and up	\$171	6 Classes	<a href="#">PICE0225-212002</a>

### Wheaton Ice Arena

[Click to Register](#)

Jun 18-Jul 23	Tue	6:30-7p	Ages 13 and up	\$114	6 Classes	<a href="#">PICE0225-215001</a>
Jun 27-Aug 8	Thu	6:45-7:15p	Ages 13 and up	\$114	6 Classes	<a href="#">PICE0225-215002</a>

## Pre Free Skate

Prerequisite: Passed Youth Ice Skating 6. Skaters will learn forward inside open mohawk, backward outside edge to forward outside edge transition on a circle, ballet jump, backward crossovers to backward outside edge glides, combination step sequences, one-foot upright spin, mazurka, and waltz jump. Fee includes skate rental and a practice card good for admission to public skate sessions to practice skills learned in class.

### Cabin John Ice Rink

[Click to Register](#)

Jun 24-Jul 29	Mon	5-5:45p	Ages 4 to 12	\$171	6 Classes	<a href="#">PICE0300-212001</a>
Jun 27-Aug 8	Thu	5-5:45p	Ages 4 to 12	\$171	6 Classes	<a href="#">PICE0300-212003</a>
Jun 22-Jul 27	Sat	9-9:45a	Ages 4 to 12	\$171	6 Classes	<a href="#">PICE0300-212004</a>

### Wheaton Ice Arena

[Click to Register](#)

Jun 23-Jul 28	Sun	2:15-2:45p	Ages 4 to 12	\$114	6 Classes	<a href="#">PICE0300-215001</a>
Jun 18-Jul 23	Tue	6-6:30p	Ages 4 to 12	\$114	6 Classes	<a href="#">PICE0300-215002</a>
Jun 27-Aug 8	Thu	6:15-6:45p	Ages 4 to 12	\$114	6 Classes	<a href="#">PICE0300-215003</a>

## Free Skate 1

Prerequisite: Passed Pre Free Skate. Learn forward power stroking, forward outside & inside consecutive edges, backward outside three-turns, upright one-foot spin from back crossovers, half flip, toe loop, and waltz jump combinations. Fee includes skate rental (if needed) plus a skating practice card.

### Cabin John Ice Rink

[Click to Register](#)

Jun 24-Jul 29	Mon	6-6:45p	Ages 5 and up	\$171	6 Classes	<a href="#">PICE0310-212001</a>
Jun 22-Jul 27	Sat	10:30-11:15a	Ages 5 and up	\$171	6 Classes	<a href="#">PICE0310-212003</a>

### Wheaton Ice Arena

[Click to Register](#)

Jun 23-Jul 28	Sun	2:15-2:45p	Ages 5 and up	\$114	6 Classes	<a href="#">PICE0310-215001</a>
Jun 18-Jul 23	Tue	6-6:30p	Ages 5 and up	\$114	6 Classes	<a href="#">PICE0310-215002</a>
Jun 27-Aug 8	Thu	6:15-6:45p	Ages 5 and up	\$114	6 Classes	<a href="#">PICE0310-215003</a>



## Free Skate 2

Prerequisite: Passed Free Skate 1. Skaters will learn basic back outside and back inside consecutive edges, forward outside and inside spirals on an axis, backward inside three-turns, beginning back spin, half lutz, and salchow. Fee includes skate rental (if needed) plus a skating practice card.

### *Cabin John Ice Rink*

[Click to Register](#)

Jun 24-Jul 29	Mon	6-6:45p	Ages 5 and up	\$171	6 Classes	<a href="#">PICE0312-212001</a>
Jun 22-Jul 27	Sat	10:30-11:15a	Ages 5 and up	\$171	6 Classes	<a href="#">PICE0312-212003</a>

### *Wheaton Ice Arena*

[Click to Register](#)

Jun 18-Jul 23	Tue	6-6:30p	Ages 5 and up	\$114	6 Classes	<a href="#">PICE0312-215001</a>
Jun 27-Aug 8	Thu	6:15-6:45p	Ages 5 and up	\$114	6 Classes	<a href="#">PICE0312-215002</a>

## Free Skate 3

Prerequisite: Passed Free Skate 2. Skaters will learn alternating back crossovers to backward outside edges, alternating mohawk/crossover sequence, waltz three turns, advanced back spin, loop jump, waltz jump/toe loop combination and salchow/toe loop combination. Fee includes skate rental (if needed) plus a practice card good for admission to public skate sessions.

### *Cabin John Ice Rink*

[Click to Register](#)

Jun 24-Jul 29	Mon	6:45-7:30p	Ages 5 and up	\$171	6 Classes	<a href="#">PICE0314-212001</a>
Jun 22-Jul 27	Sat	10:30-11:15a	Ages 5 and up	\$171	6 Classes	<a href="#">PICE0314-212003</a>

### *Wheaton Ice Arena*

[Click to Register](#)

Jun 18-Jul 23	Tue	6-6:30p	Ages 5 and up	\$114	6 Classes	<a href="#">PICE0314-215001</a>
Jun 27-Aug 8	Thu	6:45-7:15p	Ages 5 and up	\$114	6 Classes	<a href="#">PICE0314-215002</a>

## Free Skate 4

Prerequisite: Passed Free Skate 3. Skaters will learn forward power three-turns, waltz eight, forward upright to backward upright spin, sit spin, half loop, flip, and split jump. Fee includes skate rental (if needed) plus a practice card good for admission to public skate sessions to practice skills learned in class.

### *Cabin John Ice Rink*

[Click to Register](#)

Jun 24-Jul 29	Mon	6:45-7:30p	Ages 5 and up	\$171	6 Classes	<a href="#">PICE0316-212001</a>
Jun 22-Jul 27	Sat	10:30-11:15a	Ages 5 and up	\$171	6 Classes	<a href="#">PICE0316-212003</a>

### *Wheaton Ice Arena*

[Click to Register](#)

Jun 18-Jul 23	Tue	6-6:30p	Ages 5 and up	\$114	6 Classes	<a href="#">PICE0316-215001</a>
Jun 27-Aug 8	Thu	6:45-7:15p	Ages 5 and up	\$114	6 Classes	<a href="#">PICE0316-215002</a>

## Free Skate 5

Prerequisite: Passed Free Skate 4. Skaters will learn backward power three-turns, five-step mohawk sequence, camel spin, waltz jump/loop jump combination, lutz, and loop/loop jump combination. Fee includes skate rental (if needed) plus a practice card good for admission to public skate sessions to practice skills learned in class.

### *Cabin John Ice Rink*

[Click to Register](#)

Jun 24-Jul 29	Mon	7:30-8:15p	Ages 5 and up	\$171	6 Classes	<a href="#">PICE0318-212001</a>
Jun 22-Jul 27	Sat	10:30-11:15a	Ages 5 and up	\$171	6 Classes	<a href="#">PICE0318-212003</a>

### *Wheaton Ice Arena*

[Click to Register](#)

Jun 18-Jul 23	Tue	6-6:30p	Ages 5 and up	\$114	6 Classes	<a href="#">PICE0318-215001</a>
---------------	-----	---------	---------------	-------	-----------	---------------------------------

## Free Skate 6

Prerequisite: Passed Free Skate 5. Skaters will learn forward power pulls, creative step sequence, camel/sit spin combination, layback or cross foot spin, waltz jump/half loop/salchow combination, axel exercises, and backward outside pivot. Fee includes skate rental (if needed) plus a practice card good for admission to public skate session to practice skills learned in class.

### *Cabin John Ice Rink*

[Click to Register](#)

Jun 24-Jul 29	Mon	7:30-8:15p	Ages 5 and up	\$171	6 Classes	<a href="#">PICE0320-212001</a>
Jun 22-Jul 27	Sat	10:30-11:15a	Ages 5 and up	\$171	6 Classes	<a href="#">PICE0320-212003</a>

### *Wheaton Ice Arena*

[Click to Register](#)

Jun 18-Jul 23	Tue	6-6:30p	Ages 5 and up	\$114	6 Classes	<a href="#">PICE0320-215001</a>
---------------	-----	---------	---------------	-------	-----------	---------------------------------

## ICE SPECIALITY CLASSES

### Teen and Adult Turns and Edges

Prerequisite: Passed Teen and Adult 3. This class is an introduction skating FUNDamentals, body alignment, and technique. Skaters will work on stroking, turns, edges, connecting steps and how to make all of it, look effortless. It is meant to compliment skaters in levels Teen and Adult 3 and above.

### *Wheaton Ice Arena*

[Click to Register](#)

Jun 18-Jul 23	Tue	7-7:30p	Ages 13 and up	\$114	6 Classes	<a href="#">PICE0226-215001</a>
---------------	-----	---------	----------------	-------	-----------	---------------------------------

### Wheaton Axle Clinic

Aspire Axle Clinic: For skaters who have passed Free Skate 5 and above. This class is for figure skaters that are ready to begin and/or are currently working on their Axle Jump. This 45 minute clinic focuses on wide variety of axle exercises that will help skaters land, improve, and consistently execute their Axle Jump.

### *Wheaton Ice Arena*

[Click to Register](#)

Jun 18-Jul 23	Tue	6:30-7p	Ages 8 and up	\$114	6 Classes	<a href="#">PICE0321-215002</a>
---------------	-----	---------	---------------	-------	-----------	---------------------------------

## Advanced Spins

This class is for skaters at the Free Skate 3 and higher level and will focus on advanced spins. (Skaters should be comfortable with scratch spin, sit spin, and beginning camel spin). Class will focus on learning basic spin features, combination spins, and flying spins. Fee includes a practice card good for admission to six public skating sessions.

*Wheaton Ice Arena*

[Click to Register](#)

Jun 18-Jul 23	Tue	6:30-7p	Ages 6 and up	\$114	6 Classes	<a href="#">PICE0325-215001</a>
---------------	-----	---------	---------------	-------	-----------	---------------------------------

## High Turns and Edges

This class is for skaters on the Free Skate 3 class level and higher. Class will focus on edges and turns on the first three levels of US Figure Skating's skating skills tests to increase edge quality, power, and acceleration.

*Wheaton Ice Arena*

[Click to Register](#)

Jun 18-Jul 23	Tue	7-7:30p	Ages 6 and up	\$114	6 Classes	<a href="#">PICE0334-215001</a>
---------------	-----	---------	---------------	-------	-----------	---------------------------------

Jun 27-Aug 8	Thu	7:15-7:45p	Ages 6 and up	\$114	6 Classes	<a href="#">PICE0334-215002</a>
--------------	-----	------------	---------------	-------	-----------	---------------------------------

## Low Turns and Edges

Prerequisite: Passed Youth Ice Skating 4 or Teen and Adult 2. This class is an introduction skating FUNDamentals, body alignment, and technique. Skaters will work on stroking, turns, edges, and connecting steps and how to make all of it, look effortless. It is meant to compliment skaters in levels Youth Ice Skating 5 through Free Skate 2.

*Wheaton Ice Arena*

[Click to Register](#)

Jun 27-Aug 8	Thu	6:45-7:15p	Ages 6 and up	\$114	6 Classes	<a href="#">PICE0335-215001</a>
--------------	-----	------------	---------------	-------	-----------	---------------------------------

## Artistry on Ice

Prerequisite: Must have passed Youth Ice Skating 5. This class introduces the basic principles and philosophy of choreography, presentation, and performance. Skaters will learn basic dance movement, terminology, musical interpretation, body awareness, and program construction. Begin your artistic journey and how it relates to figure skating here!

*Wheaton Ice Arena*

[Click to Register](#)

Jun 18-Jul 23	Tue	6:30-7p	Ages 6 and up	\$114	6 Classes	<a href="#">PICE0337-215001</a>
---------------	-----	---------	---------------	-------	-----------	---------------------------------

## Adult Edge Class

Join us for an adults only 30 minute edge class followed by 30 minutes of free skating time on the NHL Rink. Class will focus on improving edges, turns, and power as well as fitness. Skaters should be comfortable with forward and backward stroking, basic turns, and crossovers.

*Cabin John Ice Rink*

[Click to Register](#)

May 30	Thu	11:15a-12:15p	Ages 18 and up	\$19	1 Class	<a href="#">PCJI2004-102139</a>
Jun 4	Tue	11:15a-12:15p	Ages 18 and up	\$19	1 Class	<a href="#">PCJI2004-102140</a>
Jun 6	Thu	11:15a-12:15p	Ages 18 and up	\$19	1 Class	<a href="#">PCJI2004-102141</a>
Jun 11	Tue	11:15a-12:15p	Ages 18 and up	\$19	1 Class	<a href="#">PCJI2004-102142</a>
Jun 13	Thu	11:15a-12:15p	Ages 18 and up	\$19	1 Class	<a href="#">PCJI2004-102143</a>
Jun 18	Tue	10-11a	Ages 18 and up	\$19	1 Class	<a href="#">PCJI2004-102144</a>
Jun 25	Tue	10-11a	Ages 18 and up	\$19	1 Class	<a href="#">PCJI2004-102145</a>
Jul 2	Tue	10-11a	Ages 18 and up	\$19	1 Class	<a href="#">PCJI2004-102146</a>
Jul 9	Tue	10-11a	Ages 18 and up	\$19	1 Class	<a href="#">PCJI2004-102147</a>
Jul 16	Tue	10-11a	Ages 18 and up	\$19	1 Class	<a href="#">PCJI2004-102148</a>
Jul 23	Tue	10-11a	Ages 18 and up	\$19	1 Class	<a href="#">PCJI2004-102149</a>
Jul 30	Tue	10-11a	Ages 18 and up	\$19	1 Class	<a href="#">PCJI2004-102150</a>
Aug 6	Tue	10-11a	Ages 18 and up	\$19	1 Class	<a href="#">PCJI2004-102151</a>
Aug 13	Tue	10-11a	Ages 18 and up	\$19	1 Class	<a href="#">PCJI2004-102152</a>
Aug 20	Tue	10-11a	Ages 18 and up	\$19	1 Class	<a href="#">PCJI2004-102153</a>

## Beginner Accelerated Skating Class

Cool off in August at the ice rink! This class will meet for five days to learn the basics of beginning ice skating including falling down and getting up, skating forward, skating backward, beginning stops and turns. Fee includes skate rental and practice card good for six public skating admissions. Helmets and gloves are required (bike helmets are fine).

*Cabin John Ice Rink*

[Click to Register](#)

Aug 12-16	Mon-Fri	11:45a-12:30p	Ages 4 to 12	\$114	5 Classes	<a href="#">PCJI2023-212001</a>
-----------	---------	---------------	--------------	-------	-----------	---------------------------------

## ICE HOCKEY

### Hockey 1

Prerequisite: Passed Youth Ice Skating 1 or Preschool Ice Skating 4. Skater will learn falling and getting up in hockey skates, proper stance, march forward across the ice, 8-10 steps, forward two-foot glide, dip, forward swizzles, T-push to a two-foot glide, front to back turns, and snowplow stop. Fee includes skate rental, and a practice card good for admission to six public skate sessions to practice skills learned in class. Equipment required: Caged hockey helmet, flat stick cut to skater's height, and hockey skates.

#### *Cabin John Ice Rink*

[Click to Register](#)

Jun 25-Jul 30	Tue	5-5:30p	Ages 4 to 12	\$114	6 Classes	<a href="#">PICE0351-212001</a>
Jun 22-Jul 27	Sat	10-10:30a	Ages 4 to 12	\$114	6 Classes	<a href="#">PICE0351-212003</a>

#### *Wheaton Ice Arena*

[Click to Register](#)

Jun 23-Jul 28	Sun	1:15-1:45p	Ages 4 to 12	\$114	6 Classes	<a href="#">PICE0351-215001</a>
---------------	-----	------------	--------------	-------	-----------	---------------------------------

### Hockey 2

Prerequisite: Passed Hockey 1. Skaters will learn strides using 45-degree v push, forward one-foot push and glides, forward alternating C-cuts, backward hustles to glides on two feet, backward swizzles, backward alternating C-cuts, moving skateboard push, and moving snowplow stop. Fee includes skate rental, and a practice card good for admission to six public skate sessions to practice skills learned in class. Equipment required: Caged hockey helmet, shin guards, hockey gloves, flat stick cut to skater's height, and hockey skates.

#### *Cabin John Ice Rink*

[Click to Register](#)

Jun 25-Jul 30	Tue	5-5:30p	Ages 4 to 12	\$114	6 Classes	<a href="#">PICE0352-212001</a>
Jun 22-Jul 27	Sat	10-10:30a	Ages 4 to 12	\$114	6 Classes	<a href="#">PICE0352-212003</a>

#### *Wheaton Ice Arena*

[Click to Register](#)

Jun 23-Jul 28	Sun	1:15-1:45p	Ages 4 to 12	\$114	6 Classes	<a href="#">PICE0352-215001</a>
---------------	-----	------------	--------------	-------	-----------	---------------------------------

### Hockey 3

Prerequisite: Passed Hockey 2. Skaters will learn lateral crossover march, forward C-cuts on a circle, forward outside and inside edges on half circles, backward C-cuts, backward snowplow stops, forward stop-starts, and one-foot forward snowplow stops. Fee includes skate rental and a practice card good for admission to public sessions to practice skills learned in class. Equipment required: Caged hockey helmet, shoulder and elbow pads, hockey pants, shin guards, hockey gloves, protective cup, curved stick cut to skater's height, and hockey skates.

#### *Cabin John Ice Rink*

[Click to Register](#)

Jun 25-Jul 30	Tue	5:30-6:15p	Ages 4 to 12	\$171	6 Classes	<a href="#">PICE0353-212001</a>
Jun 26-Jul 31	Wed	5:45-6:30p	Ages 4 to 12	\$171	6 Classes	<a href="#">PICE0353-212002</a>
Jun 22-Jul 27	Sat	8:15-9a	Ages 4 to 12	\$171	6 Classes	<a href="#">PICE0353-212003</a>

## Hockey 4

Prerequisite: Passed Hockey 3. Skaters will learn quick starts using V-starts, backward one-foot glides, forward and backward crossovers, forward to backward Mohawk pivots, and hockey stops. Fee includes skate rental and a practice card good for admission to public skate sessions to practice skills learned in class. Equipment required: Caged hockey helmet, shoulder and elbow pads, hockey pants, shin guards, hockey gloves, protective cup, curved stick cut to skater's height, and hockey skates.

*Cabin John Ice Rink*

[Click to Register](#)

Jun 25-Jul 30	Tue	5:30-6:15p	Ages 4 to 12	\$171	6 Classes	<a href="#">PICE0354-212001</a>
Jun 26-Jul 31	Wed	5:45-6:30p	Ages 4 to 12	\$171	6 Classes	<a href="#">PICE0354-212002</a>
Jun 22-Jul 27	Sat	8:15-9a	Ages 4 to 12	\$171	6 Classes	<a href="#">PICE0354-212003</a>

## Hockey Advanced

Prerequisite: Passed Hockey 4. Skaters will learn powerful backward C-cuts, alternating forward and backward crossovers, forward power hockey turns, lateral pivots, fast stops and starts, and fast backward skating with quick backward V-stops. Fee includes skate rental, and a practice card good for admission to public skate sessions to practice skills learned in class. Equipment required: Caged hockey helmet, shoulder and elbow pads, hockey pants, shin guards, hockey gloves, protective cup, stick cut to skater's height, and hockey skates.

*Cabin John Ice Rink*

[Click to Register](#)

Jun 25-Jul 30	Tue	6:15-7p	Ages 4 to 14	\$171	6 Classes	<a href="#">PICE0355-212001</a>
Jun 26-Jul 31	Wed	6:45-7:30p	Ages 4 to 14	\$171	6 Classes	<a href="#">PICE0355-212002</a>
Jun 22-Jul 27	Sat	8:15-9a	Ages 4 to 14	\$171	6 Classes	<a href="#">PICE0355-212003</a>

## Teen and Adult Hockey 1

Prerequisite: Passed Teen & Adult 1 in hockey skates. Learn the fundamentals of hockey skating including alternating forward and backward c-cuts, backward swizzles, one-foot snowplow stop, lateral crossover march, forward c-cuts on a circle, and turns from forward to backward. Skaters will also learn skating with a puck and beginning passing and stickhandling skills. Fee includes skate rental, and a practice card good for admission to public skate sessions to practice skills learned in class. Equipment required: Caged hockey helmet, shoulder and elbow pads, hockey pants, shin guards, hockey gloves, protective cup, stick cut to skater's height, and hockey skates (rental hockey skates are available).

*Cabin John Ice Rink*

[Click to Register](#)

Jun 22-Jul 27	Sat	9:15-10a	Ages 13 and up	\$171	6 Classes	<a href="#">PICE0357-212001</a>
---------------	-----	----------	----------------	-------	-----------	---------------------------------

## Teen and Adult Hockey 2

Prerequisite: Passed Teen & Adult Hockey 1. This class will focus on more advanced skating skills including backward crossovers, hockey stops, forward power hockey turns, fast stops & starts, backward V-stops, and forward to backward mohawk pivots. Skaters will also learn hockey techniques, rules, and game play including some scrimmage time. Fee includes skate rental, and a practice card good for admission to public skate sessions to practice skills learned in class. Equipment required: Caged hockey helmet, shoulder and elbow pads, hockey pants, shin guards, hockey gloves, protective cup, stick cut to skater's height, and hockey skates (rental hockey skates are available).

*Cabin John Ice Rink*

[Click to Register](#)

Jun 26-Jul 31	Wed	7:30-8:15p	Ages 13 and up	\$171	6 Classes	<a href="#">PICE0358-212001</a>
Jun 22-Jul 27	Sat	8:15-9a	Ages 13 and up	\$171	6 Classes	<a href="#">PICE0358-212002</a>

## Stickhandling and Passing

Prerequisite: Passed Hockey 1. This class focuses on proper technique for stickhandling and passing. Skaters will learn individual skills including proper grips and maneuvering with a puck as well as fundamental passing skills with other players. No game experience is needed. Fee includes skate rental, and a practice card good for admission to public skate sessions to practice skills learned in class. Equipment required: Full gear required.

*Cabin John Ice Rink*

[Click to Register](#)

Jun 22-Jul 27	Sat	10:30-11a	Ages 4 to 12	\$114	6 Classes	<a href="#">PICE0360-212001</a>
---------------	-----	-----------	--------------	-------	-----------	---------------------------------

## Hockey Offensive Skills

Prerequisite: Passed Hockey 2. This advanced hockey class will focus on getting through the offensive zone and putting the puck in the net. Topics covered will include shooting techniques and accuracy, speed and agility, stickhandling, skating in open ice, receiving passes, and defending the puck. Full gear required.

*Wheaton Ice Arena*

[Click to Register](#)

Jun 23-Jul 28	Sun	2:15-2:45p	Ages 5 to 11	\$114	6 Classes	<a href="#">PICE0361-215001</a>
---------------	-----	------------	--------------	-------	-----------	---------------------------------

## Hockey Power Skating

Improve your conditioning and skating skills. This class will focus on stride length, take-offs and acceleration, agility skating, and edge work. Skaters must have passed Hockey 2.

*Wheaton Ice Arena*

[Click to Register](#)

Jun 23-Jul 28	Sun	1:45-2:15p	Ages 5 to 12	\$114	6 Classes	<a href="#">PICE0365-215001</a>
---------------	-----	------------	--------------	-------	-----------	---------------------------------



**PAULINE BETZ ADDIE TENNIS CENTER**  
7801 Democracy Blvd | Bethesda, MD 20817  
301-765-8650  
[PBATennis.org](https://PBATennis.org)

**WHEATON INDOOR TENNIS**  
11715 Orebaugh Ave | Wheaton, MD 20902  
301-905-3030  
[WheatonTennis.org](https://WheatonTennis.org)



Programs are subject to change.  
For the most up-to-date listings visit:  
[PBATennis.org](https://PBATennis.org) or [WheatonTennis.org](https://WheatonTennis.org)

### CLASS DATES

Registration Opens June 11, 6:30 am  
Registration Dates: June 11–20  
Class Dates: June 22–August 8  
No Classes: July 4, August 3–7

### On your first day of class...

- Bring a racquet and water bottle.
- Wear proper footwear and athletic clothes.

### COURSE FEES COVER

- Six group lessons
- Starter racquet's available for purchase

### PLEASE NOTE

- No make-ups or refunds for missed lessons.
- Please read course descriptions carefully and select courses that match player ability and experience.
- At the end of each class series, the player will receive an evaluation recommending your next class.
- If you see a class you like, register!  
Classes may be canceled if a minimum enrollment is not met.



## TENNIS

### Parent & Child Tennis

Our youngest beginners, with the help of a parent, will practice basic tennis skills through fun exercises and games that can be continued outside of class. Fee covers one adult and one child; register the child only. (Red Court/Red Balls; loaner racquets available)

<i>Pauline Betz Addie Tennis Center</i>						<a href="#">Click to Register</a>
Jun 23-Jul 28	Sun	2-3p	Ages 4 to 7	\$150	6 Classes	<a href="#">PTEN0001-210004</a>
Jun 25-Jul 30	Tue	5-6p	Ages 4 to 7	\$150	6 Classes	<a href="#">PTEN0001-210005</a>
<i>Wheaton Indoor Tennis</i>						<a href="#">Click to Register</a>
Jun 22-Aug 3	Sat	11a-12p	Ages 4 to 7	\$129	6 Classes	<a href="#">PTEN0001-216002</a>
Jun 23-Aug 11	Sun	12-1p	Ages 4 to 7	\$129	6 Classes	<a href="#">PTEN0001-216003</a>
Jun 24-Aug 5	Mon	6-7p	Ages 4 to 7	\$129	6 Classes	<a href="#">PTEN0001-216004</a>

### Youth Tennis, Beginner 5-7

Group lesson class for the young beginner who has limited or no prior tennis experience. Class teaches basic strokes and promotes cooperative play through games and skill-building activities. Instruction for ages 5-7 focuses on hand-eye coordination, movement, and basic tennis strokes. Instruction for ages 7-10 focuses on racquet control drills, sending and receiving, rallying skills, and ABCs (agility, balance, and coordination). (Combination of Red Court/Red Balls and Orange Court/Orange Balls; loaner racquets available)

<i>Pauline Betz Addie Tennis Center</i>						<a href="#">Click to Register</a>
Jun 26-Jul 31	Wed	5-6p	Ages 5 to 7	\$141	6 Classes	<a href="#">PTEN0005-210012</a>
Jun 23-Jul 28	Sun	9-10a	Ages 5 to 7	\$141	6 Classes	<a href="#">PTEN0005-210013</a>
<i>Wheaton Indoor Tennis</i>						<a href="#">Click to Register</a>
Jun 26-Jul 31	Wed	5-6p	Ages 5 to 7	\$117	6 Classes	<a href="#">PTEN0005-216011</a>
Jun 22-Aug 10	Sat	10-11a	Ages 5 to 7	\$117	6 Classes	<a href="#">PTEN0005-216012</a>

### Youth Tennis, Intermediate 5-7

Prerequisite: Passed Beginner level. For the developing player who can rally on the Red Court but needs additional work on stroke production, tennis specific footwork, and situational play. Skill building continues with increased emphasis on cooperative drills. (Combination of Red Court/Red Balls and Orange Court/Orange Balls; loaner racquets available)

<i>Pauline Betz Addie Tennis Center</i>						<a href="#">Click to Register</a>
Jun 23-Jul 28	Sun	10-11a	Ages 5 to 7	\$141	6 Classes	<a href="#">PTEN0010-210023</a>
Jun 26-Jul 31	Wed	5-6p	Ages 5 to 7	\$141	6 Classes	<a href="#">PTEN0010-210024</a>



### Youth Tennis, Beginner 7-10

Group lesson class for the young beginner who has limited or no prior tennis experience. Class teaches basic strokes and promotes cooperative play through games and skill-building activities. Instruction for ages 5-7 focuses on hand-eye coordination, movement, and basic tennis strokes. Instruction for ages 7-10 focuses on racquet control drills, sending and receiving, rallying skills, and ABCs (agility, balance, and coordination). (Combination of Red Court/Red Balls and Orange Court/Orange Balls; loaner racquets available)

*Pauline Betz Addie Tennis Center*

[Click to Register](#)

Jun 22-Jul 27	Sat	9-10a	Ages 7 to 10	\$141	6 Classes	<a href="#">PTEN0015-210032</a>
---------------	-----	-------	--------------	-------	-----------	---------------------------------

*Wheaton Indoor Tennis*

[Click to Register](#)

Jun 23-Aug 11	Sun	11a-12p	Ages 7 to 10	\$117	6 Classes	<a href="#">PTEN0015-216031</a>
Jun 24-Aug 5	Mon	5-6p	Ages 7 to 10	\$117	6 Classes	<a href="#">PTEN0015-216034</a>

### Youth Tennis, Intermediate 7-10

Prerequisite: Passed Beginner level. For the developing player who can rally on the Red Court but needs additional work on stroke production, tennis specific footwork, and situational play. Skill building continues with increased emphasis on cooperative drills. (Combination of Red Court/Red Balls and Orange Court/Orange Balls; loaner racquets available)

*Pauline Betz Addie Tennis Center*

[Click to Register](#)

Jun 22-Jul 27	Sat	10-11a	Ages 7 to 10	\$141	6 Classes	<a href="#">PTEN0020-210042</a>
---------------	-----	--------	--------------	-------	-----------	---------------------------------

*Wheaton Indoor Tennis*

[Click to Register](#)

Jun 26-Jul 31	Wed	6-7p	Ages 7 to 10	\$117	6 Classes	<a href="#">PTEN0020-216041</a>
Jun 27-Aug 1	Thu	5-6p	Ages 7 to 10	\$117	6 Classes	<a href="#">PTEN0020-216042</a>
Jun 22-Aug 10	Sat	9-10a	Ages 7 to 10	\$117	6 Classes	<a href="#">PTEN0020-216043</a>

## Youth Tennis, Advanced 7-10

Prerequisite: Passed Youth Tennis, Intermediate. For players who can rally consistently and comfortably engage in point play against a variety of players. Focus will be on improving movement, positioning, concentration, focus, shot placement, and closing points. (Combination of Red Court/Red Balls and Orange Court/Orange Balls); may incorporate use of Green Dot Ball for players ready to transition from the Orange Court to full court play)

*Pauline Betz Addie Tennis Center*

[Click to Register](#)

Jun 22-Jul 27	Sat	11a-12p	Ages 7 to 10	\$150	6 Classes	<a href="#">PTEN0025-210051</a>
---------------	-----	---------	--------------	-------	-----------	---------------------------------

## Beginner 1 Tennis, Middle School

Prerequisite: For beginners who have never played before or have not played recently. The goal of this class is to teach fundamentals of the game, including etiquette and vocabulary, rules, positioning, and scorekeeping. Players will learn basic mechanics for hitting groundstrokes, volleys, overheads and serves. May incorporate use of Orange and Green Dot Balls to reinforce development, consistency, and control.

*Pauline Betz Addie Tennis Center*

[Click to Register](#)

Jun 23-Jul 28	Sun	12-1p	Ages 11 to 14	\$141	6 Classes	<a href="#">PTEN0040-210081</a>
---------------	-----	-------	---------------	-------	-----------	---------------------------------

Jun 24-Jul 29	Mon	6-7p	Ages 11 to 14	\$141	6 Classes	<a href="#">PTEN0040-210082</a>
---------------	-----	------	---------------	-------	-----------	---------------------------------

*Wheaton Indoor Tennis*

[Click to Register](#)

Jun 25-Aug 6	Tue	5-6p	Ages 11 to 14	\$117	6 Classes	<a href="#">PTEN0040-216083</a>
--------------	-----	------	---------------	-------	-----------	---------------------------------

## Beginner 2 Tennis, Middle School

Prerequisite: Passed Beginner 1 Tennis or player with recent playing experience seeking a refresher on fundamentals. Class includes a review of tennis etiquette and vocabulary, safety, rules, and scoring. Continued focus on footwork, positioning, and directional control. Additional time will be spent on drills and situational play. Groundstrokes, volleys, overheads, and serves will be critiqued.

*Pauline Betz Addie Tennis Center*

[Click to Register](#)

Jun 22-Jul 27	Sat	12-1p	Ages 11 to 14	\$141	6 Classes	<a href="#">PTEN0045-210092</a>
---------------	-----	-------	---------------	-------	-----------	---------------------------------

Jun 23-Jul 28	Sun	1-2p	Ages 11 to 14	\$141	6 Classes	<a href="#">PTEN0045-210093</a>
---------------	-----	------	---------------	-------	-----------	---------------------------------

*Wheaton Indoor Tennis*

[Click to Register](#)

Jun 26-Jul 31	Wed	5-6p	Ages 11 to 14	\$117	6 Classes	<a href="#">PTEN0045-216091</a>
---------------	-----	------	---------------	-------	-----------	---------------------------------

Jun 23-Aug 11	Sun	11a-12p	Ages 11 to 14	\$117	6 Classes	<a href="#">PTEN0045-216093</a>
---------------	-----	---------	---------------	-------	-----------	---------------------------------

## Intermediate Tennis, Middle School

Prerequisite: Passed Beginner 2. Players have experience in the fundamentals of tennis and are ready to work on consistency, accuracy, and technical mastery of strokes and footwork. The focus will be on drills and play situations to improve rallying skills and overall level of play.

### *Pauline Betz Addie Tennis Center*

[Click to Register](#)

Jun 22-Jul 27	Sat	1-2p	Ages 11 to 14	\$141	6 Classes	<a href="#">PTEN0050-210101</a>
Jun 27-Aug 8	Thu	6-7p	Ages 11 to 14	\$141	6 Classes	<a href="#">PTEN0050-210104</a>

### *Wheaton Indoor Tennis*

[Click to Register](#)

Jun 22-Aug 10	Sat	12-1p	Ages 11 to 14	\$117	6 Classes	<a href="#">PTEN0050-216101</a>
Jun 26-Jul 31	Wed	6-7p	Ages 11 to 14	\$117	6 Classes	<a href="#">PTEN0050-216102</a>

## Beginner 1 Tennis, High School

Prerequisite: For beginners who have never played before or have not played recently. The goal of this class is to teach fundamentals of the game, including etiquette and vocabulary, rules, positioning, and scorekeeping. Players will learn basic mechanics for hitting groundstrokes, volleys, overheads and serves. May incorporate use of Orange and Green Dot Balls to reinforce development, consistency, and control.

### *Pauline Betz Addie Tennis Center*

[Click to Register](#)

Jun 24-Jul 29	Mon	6-7p	Ages 15 to 18	\$141	6 Classes	<a href="#">PTEN0055-210113</a>
---------------	-----	------	---------------	-------	-----------	---------------------------------

### *Wheaton Indoor Tennis*

[Click to Register](#)

Jun 22-Aug 10	Sat	11a-12p	Ages 15 to 18	\$117	6 Classes	<a href="#">PTEN0055-216111</a>
---------------	-----	---------	---------------	-------	-----------	---------------------------------

## Beginner 2 Tennis, High School

Prerequisite: Passed Beginner 1 Tennis or player with recent playing experience seeking a refresher on fundamentals. Class includes a review of tennis etiquette and vocabulary, safety, rules, and scoring. Continued focus on footwork, positioning, and directional control. Additional time will be spent on drills and situational play. Groundstrokes, volleys, overheads, and serves will be critiqued.

### *Pauline Betz Addie Tennis Center*

[Click to Register](#)

Jun 25-Jul 30	Tue	6-7p	Ages 15 to 18	\$141	6 Classes	<a href="#">PTEN0060-210124</a>
---------------	-----	------	---------------	-------	-----------	---------------------------------

## Intermediate Tennis, High School

Prerequisite: Passed Beginner 2. Players have experience in the fundamentals of tennis and are ready to work on consistency, accuracy, and technical mastery of strokes and footwork. The focus will be on drills and play situations to improve rallying skills and overall level of play.

### *Pauline Betz Addie Tennis Center*

[Click to Register](#)

Jun 26-Jul 31	Wed	6-7p	Ages 15 to 18	\$141	6 Classes	<a href="#">PTEN0065-210132</a>
---------------	-----	------	---------------	-------	-----------	---------------------------------

## Intro to Match Play Tennis, Middle School

Prerequisite: Passed Intermediate Tennis or Instructor Approval. Time to put your skills into play. Learn the basics of match play using USTA's Junior Team Tennis (JTT) format. The focus will be on positioning and strategy for full court play in both singles and doubles. By the end of this class, you should be ready for the fun of playing official Junior Team Tennis on a team with new friends.

*Wheaton Indoor Tennis*

[Click to Register](#)

Jun 23-Aug 11	Sun	1-2p	Age 11 to 14	\$129	6 Classes	<a href="#">PTEN0070-216141</a>
---------------	-----	------	--------------	-------	-----------	---------------------------------

## Advanced Match Play, Middle School

Prerequisite: Passed Intermediate 2, More Match Play, or Instructor Approval. For competitive players training for tournaments and/or school team tennis. Focus on enhancing footwork and agility, stroke production, and use of offensive and defensive shots. Additional emphasis on physical conditioning, mental preparedness, and sportsmanship.

*Pauline Betz Addie Tennis Center*

[Click to Register](#)

Jun 22-Jul 27	Sat	12-1p	Ages 11 to 14	\$150	6 Classes	<a href="#">PTEN0080-210162</a>
Jun 23-Jul 28	Sun	12-1p	Ages 11 to 14	\$150	6 Classes	<a href="#">PTEN0080-210163</a>

## Advanced Match Play Tennis, High School

Prerequisite: Passed Intermediate 2, More Match Play, or Instructor Approval. For competitive players training for tournaments and/or high school team tennis. Focus on enhancing footwork and agility, stroke production, and use of offensive and defensive shots. Additional emphasis on physical conditioning, mental preparedness, and sportsmanship.

*Pauline Betz Addie Tennis Center*

[Click to Register](#)

Jun 23-Jul 28	Sun	11a-12p	Ages 15 to 18	\$150	6 Classes	<a href="#">PTEN0085-210171</a>
---------------	-----	---------	---------------	-------	-----------	---------------------------------

## Beginner 1 Tennis, Adult (NTRP 2.0)

Designed to turn adult beginners into tennis players. Students will enjoy one-hour lessons with our certified tennis coaches and learn the basics of tennis including the serve, forehand, backhand, and net play for singles and doubles featuring a Rally and Play approach.

*Pauline Betz Addie Tennis Center*

[Click to Register](#)

Jun 27-Aug 8	Thu	7-8p	Ages 18 and up	\$141	6 Classes	<a href="#">PTEN0090-210186</a>
Jun 22-Jul 27	Sat	11a-12p	Ages 18 and up	\$141	6 Classes	<a href="#">PTEN0090-210191</a>
Jun 23-Jul 28	Sun	10-11a	Ages 18 and up	\$141	6 Classes	<a href="#">PTEN0090-210192</a>

*Wheaton Indoor Tennis*

[Click to Register](#)

Jun 27-Aug 1	Thu	6-7p	Ages 18 and up	\$117	6 Classes	<a href="#">PTEN0090-216182</a>
Jun 23-Aug 11	Sun	9-10a	Ages 18 and up	\$117	6 Classes	<a href="#">PTEN0090-216183</a>
Jun 22-Aug 3	Sat	1-2p	Ages 18 and up	\$117	6 Classes	<a href="#">PTEN0090-216184</a>

## Beginner 2 Tennis, Adult (NTRP 2.5)

This player has played some tennis but needs additional instruction on basic skills and techniques. Rally and Play approach reinforces introduction to positioning, movement, and rules of play.

### *Pauline Betz Addie Tennis Center*

[Click to Register](#)

Jun 25-Jul 30	Tue	7-8p	Ages 18 and up	\$141	6 Classes	<a href="#">PTEN0095-210193</a>
---------------	-----	------	----------------	-------	-----------	---------------------------------

### *Wheaton Indoor Tennis*

[Click to Register](#)

Jun 25-Aug 6	Tue	6-7p	Ages 18 and up	\$117	6 Classes	<a href="#">PTEN0095-216191</a>
--------------	-----	------	----------------	-------	-----------	---------------------------------

Jun 23-Aug 11	Sun	12-1p	Ages 18 and up	\$117	6 Classes	<a href="#">PTEN0095-216193</a>
---------------	-----	-------	----------------	-------	-----------	---------------------------------

## Intermediate Tennis, Adult (NTRP 3.0)

Prerequisite: Passed Beginner 2, Adult. This player can keep the ball in play but needs to improve consistency of strokes and overall understanding of court positioning, strategy, and use of shots in various situations.

### *Pauline Betz Addie Tennis Center*

[Click to Register](#)

Jun 22-Jul 27	Sat	10-11a	Ages 18 and up	\$141	6 Classes	<a href="#">PTEN0100-210202</a>
---------------	-----	--------	----------------	-------	-----------	---------------------------------

Jun 24-Jul 29	Mon	7-8p	Ages 18 and up	\$141	6 Classes	<a href="#">PTEN0100-210205</a>
---------------	-----	------	----------------	-------	-----------	---------------------------------

Jun 25-Jul 30	Tue	8-9p	Ages 18 and up	\$141	6 Classes	<a href="#">PTEN0100-210207</a>
---------------	-----	------	----------------	-------	-----------	---------------------------------

### *Wheaton Indoor Tennis*

[Click to Register](#)

Jun 24-Aug 5	Mon	7-8p	Ages 18 and up	\$117	6 Classes	<a href="#">PTEN0100-216201</a>
--------------	-----	------	----------------	-------	-----------	---------------------------------

Jun 26-Jul 31	Wed	7-8p	Ages 18 and up	\$117	6 Classes	<a href="#">PTEN0100-216203</a>
---------------	-----	------	----------------	-------	-----------	---------------------------------



## Advanced Tennis, Adult (NTRP 4.0 & Up)

Prerequisite: Passed Intermediate or Instructor approval. A competitive clinic involving intense drilling, competitive situational games, and match play. Course will focus on finessing use of lobs, overheads, approach shots, and volleys. Student will also concentrate on hitting with power, spin, depth, and control.

*Pauline Betz Addie Tennis Center*

[Click to Register](#)

Jun 23-Jul 28	Sun	2-3p	Ages 18 and up	\$150	6 Classes	<a href="#">PTEN0110-210222</a>
---------------	-----	------	----------------	-------	-----------	---------------------------------

*Wheaton Indoor Tennis*

[Click to Register](#)

Jun 25-Aug 6	Tue	7-8p	Ages 18 and up	\$129	6 Classes	<a href="#">PTEN0110-216221</a>
--------------	-----	------	----------------	-------	-----------	---------------------------------

## Match Play 3.0 Tennis

The 3.0 player is fairly consistent when hitting medium-paced shots but is not comfortable with all strokes and lacks execution when trying for directional control, depth, and pace. First half of class focuses on needed drills and skills. Class finishes with a session of supervised match play. Instructor reserves the right to transfer you up or down a level if you are not closely matched in skill level.

*Pauline Betz Addie Tennis Center*

[Click to Register](#)

Jun 24-Jul 29	Mon	7-9p	Ages 18 and up	\$150	6 Classes	<a href="#">PTEN0115-210232</a>
---------------	-----	------	----------------	-------	-----------	---------------------------------

Jun 25-Jul 30	Tue	7-8p	Ages 18 and up	\$150	6 Classes	<a href="#">PTEN0115-210233</a>
---------------	-----	------	----------------	-------	-----------	---------------------------------

Jun 26-Jul 31	Wed	8-9p	Ages 18 and up	\$150	6 Classes	<a href="#">PTEN0115-210234</a>
---------------	-----	------	----------------	-------	-----------	---------------------------------

Jun 27-Aug 8	Thu	7-8p	Ages 18 and up	\$150	6 Classes	<a href="#">PTEN0115-210235</a>
--------------	-----	------	----------------	-------	-----------	---------------------------------

*Wheaton Indoor Tennis*

[Click to Register](#)

Jun 27-Aug 1	Thu	6-8p	Ages 18 and up	\$258	6 Classes	<a href="#">PTEN0115-216232</a>
--------------	-----	------	----------------	-------	-----------	---------------------------------





## Match Play 3.5 Tennis

The 3.5 player has dependable strokes, but still lacks depth, variety, and the ability to alter distance of shots. Lack of confidence might limit the 3.5 player in effective use of lobs, overheads, approach shots, and volleys. This player is more comfortable at net, has improved court awareness, and is developing teamwork in doubles. First half of class focuses on needed drills and skills. Class finishes with a session of supervised match play. Instructor reserves the right to transfer you up or down a level if you are not closely matched in skill level.

### *Pauline Betz Addie Tennis Center*

[Click to Register](#)

Jun 24-Jul 29	Mon	8-9p	Ages 18 and up	\$150	6 Classes	<a href="#">PTEN0120-210241</a>
Jun 25-Jul 30	Tue	8-9p	Ages 18 and up	\$150	6 Classes	<a href="#">PTEN0120-210242</a>
Jun 26-Jul 31	Wed	7-9p	Ages 18 and up	\$150	6 Classes	<a href="#">PTEN0120-210243</a>
Jun 27-Aug 8	Thu	8-9p	Ages 18 and up	\$150	6 Classes	<a href="#">PTEN0120-210244</a>

### *Wheaton Indoor Tennis*

[Click to Register](#)

Jun 25-Jul 30	Tue	7-9p	Ages 18 and up	\$258	6 Classes	<a href="#">PTEN0120-216241</a>
Jun 27-Aug 1	Thu	6-8p	Ages 18 and up	\$258	6 Classes	<a href="#">PTEN0120-216242</a>

## Adult Cardio Tennis

This is a high energy class that combines the best features of the sport of tennis with cardiovascular exercise, delivering the ultimate, full body, calorie burning aerobic workout.

### *Pauline Betz Addie Tennis Center*

[Click to Register](#)

Jun 22-Jul 27	Sat	9-10a	Ages 18 and up	\$150	6 Classes	<a href="#">PTEN0125-210253</a>
Jun 23-Jul 28	Sun	9-10a	Ages 18 and up	\$150	6 Classes	<a href="#">PTEN0125-210254</a>
Jun 25-Jul 30	Tue	6-7p	Ages 18 and up	\$150	6 Classes	<a href="#">PTEN0125-210258</a>
Jun 27-Aug 8	Thu	8-9p	Ages 18 and up	\$150	6 Classes	<a href="#">PTEN0125-210259</a>

### *Wheaton Indoor Tennis*

[Click to Register](#)

Jun 23-Aug 11	Sun	10-11a	Ages 18 and up	\$129	6 Classes	<a href="#">PTEN0125-216251</a>
Jun 26-Jul 31	Wed	7-8p	Ages 18 and up	\$129	6 Classes	<a href="#">PTEN0125-216252</a>

## REGISTRATION INFORMATION

for Montgomery Parks

## WAYS TO REGISTER

### Online

Click the Course # link next to each program in this guide to register for that program or visit [ActiveMONTGOMERY.org](https://www.ActiveMONTGOMERY.org)

### By Mail

Fill out and sign the registration form and mail it to:

ActiveMONTGOMERY  
2425 Reddie Drive, 10th Floor  
Wheaton, MD 20902

**In-person registration is currently suspended.**



Use [ActiveMONTGOMERY.org](https://www.ActiveMONTGOMERY.org) to register for activities (courses, camps, etc.); to reserve community centers, park activity buildings, and other facilities; and to purchase memberships offered by Montgomery Parks and Montgomery County Recreation.

## QUESTIONS?

**Call 301-495-2580**

Monday–Friday, 8:30 am– 4:30 pm

Visit [ActiveMontgomery.org](https://www.ActiveMontgomery.org) for additional instructions and frequently asked questions.

### Program Access & Inclusion Services

For inquiries regarding inclusion services, programs, and accommodations, please contact the Program Access office:

Phone: **301-495-2581**

MD Relay: **7-1-1 or 800-552-7724**

Email: [ProgramAccess@MontgomeryParks.org](mailto:ProgramAccess@MontgomeryParks.org)  
[MontgomeryParks.org/Accessibility](https://www.MontgomeryParks.org/Accessibility)

## PAYMENT INFORMATION

Full Payment must be made at time of registration. Do not submit registrations and/or payments to Parks Instructors.

**CHECKS & MONEY ORDERS:** Make checks and money orders payable to **ActiveMONTGOMERY**. Checks and money orders must include name, address and phone number. If your check is returned unpaid, your account will be debited for the original check amount, and electronically or via paper for the state's maximum allowable service fee.

Payment by check constitutes authorization of these transactions. you make revoke authorization by calling 800-666-5222, ext. 2 to arrange payment for any outstanding checks and service fees due. Please allow 2 weeks to receive a refund by check.

**CREDIT CARDS:** Visa, MasterCard, American Express and Discover are accepted. Registration form must include correct credit card number, expiration date, authorized signature and authorized total amount.

Montgomery Parks and Montgomery County Recreation reserve the right to pursue all available options to collect any funds owed as a result of a dishonored check or credit card, charges incurred due to unsubstantiated credit card disputes, or any outstanding debt.