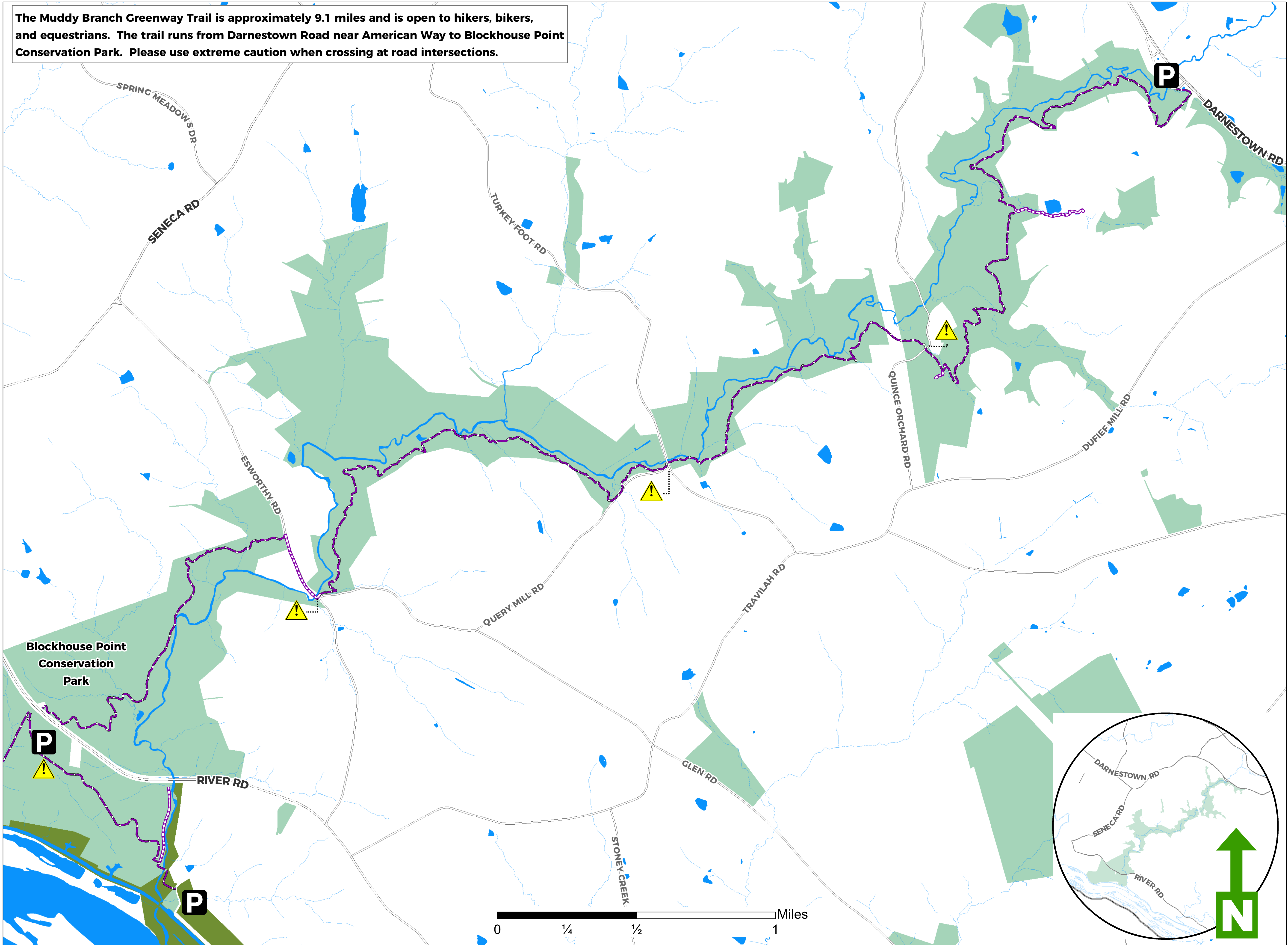
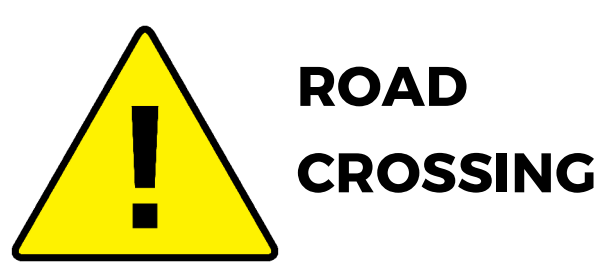


MUDDY BRANCH GREENWAY TRAIL

The Muddy Branch Greenway Trail is approximately 9.1 miles and is open to hikers, bikers, and equestrians. The trail runs from Darnestown Road near American Way to Blockhouse Point Conservation Park. Please use extreme caution when crossing at road intersections.



TRAILS



MUDDY BRANCH GREENWAY TRAIL

- NATURAL SURFACE TRAIL
- NATURAL SURFACE CONNECTOR

- WATER AREAS
- MONTGOMERY PARKS
- UNITED STATES

- Stay on marked trails. Do not blaze new trails. Trails not shown on the map are not sanctioned or maintained.
- Avoid using trails during extremely wet or soggy conditions.
- Use restrictions do apply. Observe and obey access signs.
- Be courteous to other users. Yield right of way as follows: bikers to all users; hikers to equestrians.

PARK RULES

- Park closes at dusk unless otherwise notified.
- Pets must be kept on a leash at all times.
- Alcoholic beverages are not permitted in the park.
- Smoking is prohibited
- Visitors to the park must follow all M-NCPPC Rules and Regulations, as well as any rules specific to a park facility or activity.
- For all the park rules, visit: [Montgomery Parks Rule and Regulations](https://www.montgomeryparks.org/rules-and-regulations)

Questions? Concerns?
 Call us: 301-495-2595 E-mail us: Info@MontgomeryParks.org
 Park Police: 301-949-3010/ 301-949-8010 (non-emergency)
 Submit your question or concern online: [MontgomeryParks.org/Customer](https://www.MontgomeryParks.org/Customer)

[MontgomeryParks.org](https://www.MontgomeryParks.org)

