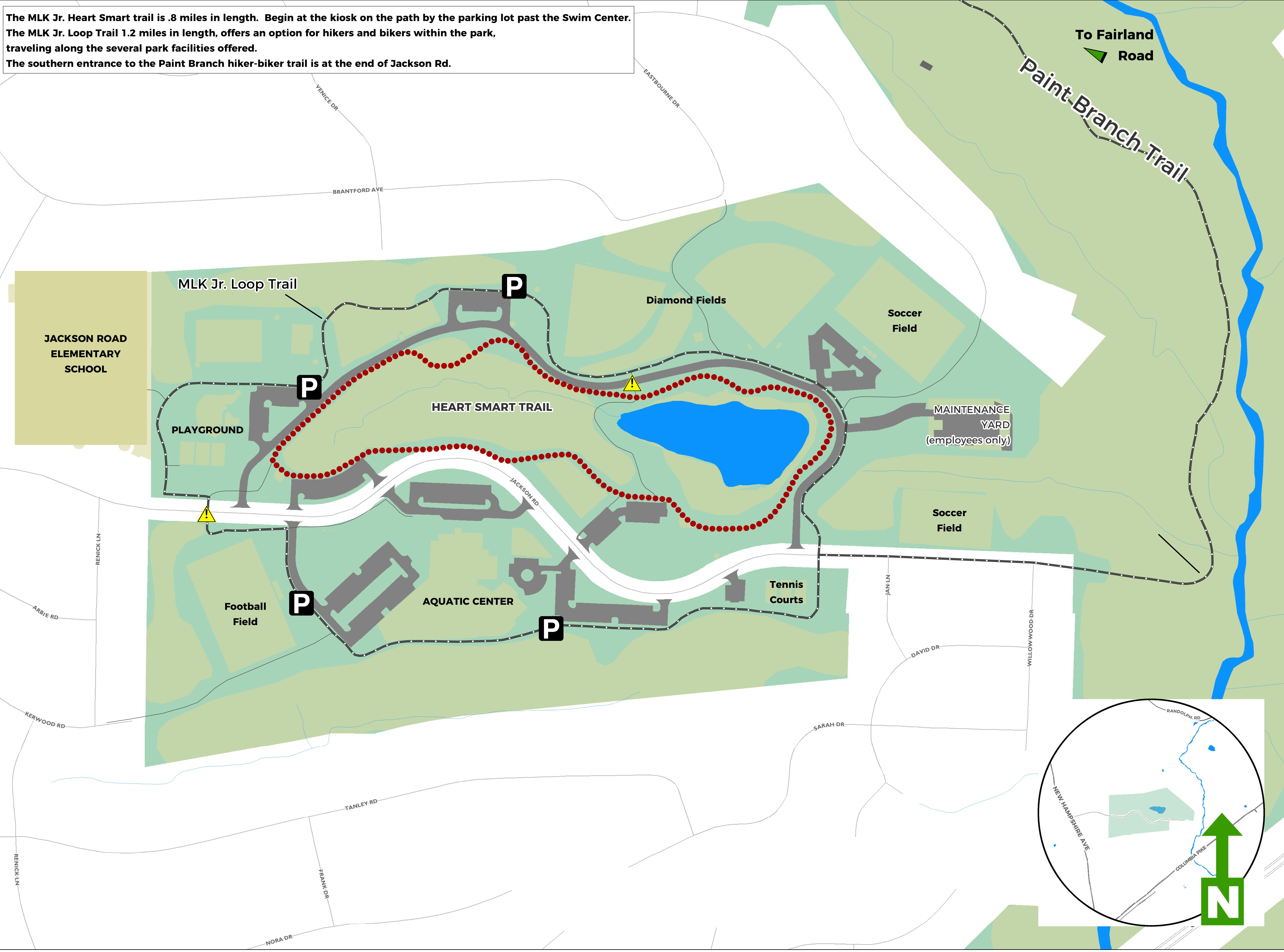


# MARTIN LUTHER KING JR. RECREATIONAL PARK TRAILS

The MLK Jr. Heart Smart trail is .8 miles in length. Begin at the kiosk on the path by the parking lot past the Swim Center.  
 The MLK Jr. Loop Trail 1.2 miles in length, offers an option for hikers and bikers within the park, traveling along the several park facilities offered.  
 The southern entrance to the Paint Branch hiker-biker trail is at the end of Jackson Rd.



## PLEASE

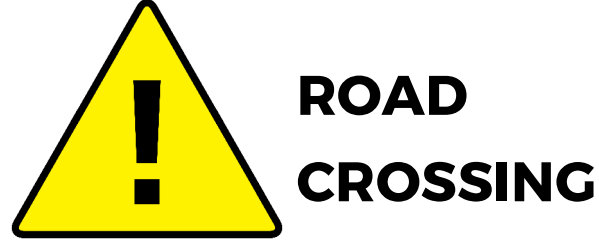
- Stay on marked trails. Do not blaze new trails. Trails not shown on the map are not sanctioned or maintained.
- Avoid using trails during extremely wet or soggy conditions.
- Use restrictions do apply. Observe and obey access signs.
- Be courteous to other users. Yield right of way as follows: bikers to all users; hikers to equestrians.

## PARK RULES

- Park closes at dusk unless otherwise notified.
- Pets must be kept on a leash at all times.
- Alcoholic beverages are not permitted in the park.
- Smoking is prohibited.
- Visitors to the park must follow all M-NCPPC Rules and Regulations, as well as any rules specific to a park facility or activity.
- For all the park rules, visit: <https://www.montgomeryparks.org/about/rules-and-regulations/>

Questions? Concerns?  
 Call us: 301-495-2595 E-mail us: [Info@MontgomeryParks.org](mailto:Info@MontgomeryParks.org)  
 Park Police: 301-949-3010/ 301-949-8010 (non-emergency)  
 Submit your question or concern online: [MontgomeryParks.org/Customer](https://www.montgomeryparks.org/Customer)

**MontgomeryParks.org**



### MONTGOMERY PARKS TRAILS

- PAVED TRAIL
- PARK PATH
- HEART SMART TRAIL-HIKING ONLY

- WATER AREAS
- MONTGOMERY PARKS